



Prince of Wales Mansions  
Prince of Wales Drive, SW11





A newly refurbished one-bedroom ground-floor apartment in the sought after Prince of Wales Mansions next to Battersea Park available to let.

Located on a ground floor this property boasting a spacious living room with charming period features, a good size double bedroom, a separate fully fitted kitchen and a contemporary bathroom. It also benefits from wooden flooring and Wandsworth council tax.

Prince Of Wales Mansions is located opposite Battersea Park and a short walk to Battersea Power station itself, as well as the underground station for the Northern Line. The over ground stations at Queenstown Road and Battersea Park are also within walking distance.

- Available Now
- Wooden Flooring
- Ground Floor
- Separate Kitchen
- Next to Battersea Park
- Furnished

**£2,250 pcm**

Additional tenant charges apply (fees apply to non-AST tenancies only)

Tenancy Agreement Fee: £300

References per Tenant/Guarantor: £60

Inventory check (approx. £100 – £250 inc. VAT)

[chestertons.co.uk/property-to-rent/applicable-fees](http://chestertons.co.uk/property-to-rent/applicable-fees)

Energy Efficiency Rating		Current	Potential
Net energy efficient - lower running costs			
100-125	A		
81-100	B		
62-81	C	70	80
43-62	D		
25-43	E		
10-25	F		
1-10	G		
Net energy efficient - higher running costs			
England, Scotland & Wales		EU Directive 2002/91/EC	

**Minimum Term:** 12 months  
**Deposit Required:** £2,596.15  
**Local Authority:** London Borough of Wandsworth  
**Council Tax Band:** D  
**EPC Rating:** C  
**Furnished**

*Chestertons Battersea Park & Nine Elms Lettings*

62-64 Battersea Bridge Road

London

SW11 3AG

batterseapark@chestertons.co.uk

02030408269

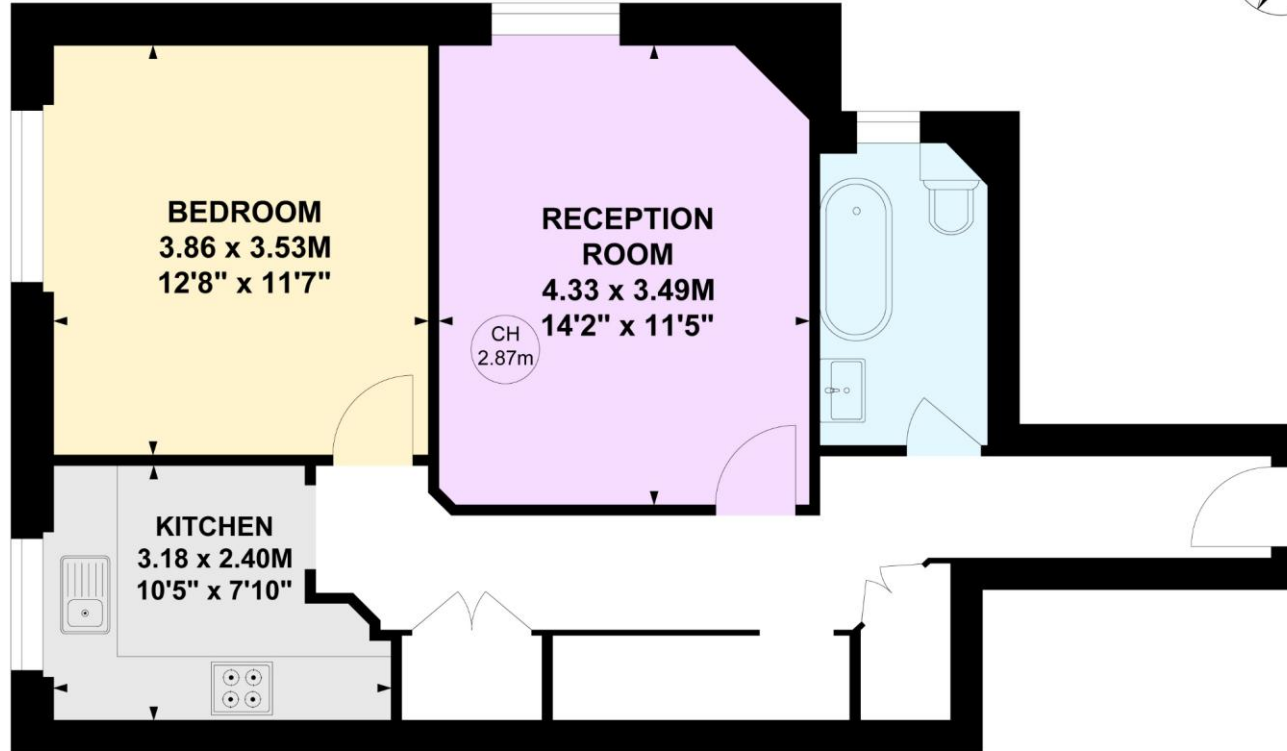
[chestertons.co.uk](http://chestertons.co.uk)

# Prince of Wales Mansions, SW11

Approximate gross internal area

56.68 sq m / 610 sq ft

Key :  
CH - Ceiling Height



## Ground Floor

Not to scale, for guidance only and must not be relied upon as a statement of fact.

All measurements and areas are approximate only

Chesterton UK Services Limited trading as Chestertons for themselves and for the vendor of this property whose agents they are, give notice that (i) these particulars do not constitute any part of an offer or contract, (ii) all statements contained within these particulars are made without responsibility on the part of Chestertons or the vendor, (iii) whilst made in good faith, none of the statements contained within these particulars are to be relied upon as a statement or representation of fact, (iv) any intending purchasers must satisfy themselves by inspection or otherwise as to the correctness of each of the statements contained within these particulars, (v) the vendor does not make or give either Chestertons or any person in their employment any authority to make or give representation or warranty whatsoever in relation to this property. Wide angle lenses may be used. ©Copyright Chestertons | Chesterton Global Ltd | Registered Office 5th Floor, The Lantern, 75 Hampstead Road, London, NW1 2PL Registered Company Number 05334580.



This paper is  
100% recyclable