



31, Turpins Close, Hertford
SG14 2EH
Offers In Excess Of £375,000



stevenoates.com



31 Turpins Close, Hertford, SG14 2EH

Nestled in the tranquil cul-de-sac of Turpins Close, this beautiful two-bedroom house is a true gem. Immaculately presented, the property benefits from a spacious living room that invites natural light, there is also a separate kitchen and dining area which is perfect for entertaining guests with French doors leading straight out onto the garden. Upstairs, this home features two well-proportioned bedrooms and the family bathroom suite. One of the standout features of this home is the generous rear garden, which provides a picturesque view over a playing field. This outdoor space is ideal for entertaining guests, or simply unwinding in the fresh air. Externally, there is also allocated parking. Situated opposite Panshanger Park, residents can enjoy the beauty of nature right on their doorstep, while local shops are just a short distance away, providing all the essentials for daily living. This property is perfect for those seeking a peaceful lifestyle without sacrificing accessibility to local amenities.

Turpins Close is a quiet residential road, located on the western side of Hertford itself, offering easy access to Hertford North mainline station and the A414 trunk road which connects to the A1(m). The village of Hertingfordbury is a short distance away providing a popular village pub and the protected green space of Panshanger Park is also close by offering excellent country walks. For the commuter, Hertford North Train Station is within easy walking distance and is only (0.8m) away. The local shops at Sele are only (0.3m) away which include a Co-op, fish and chip shop, Simmons bakery and local butchers Picketts of Hertford.



70 Fore Street, Hertford, Hertfordshire, SG14 1BY



70 Fore Street, Hertford, Hertfordshire, SG14 1BY

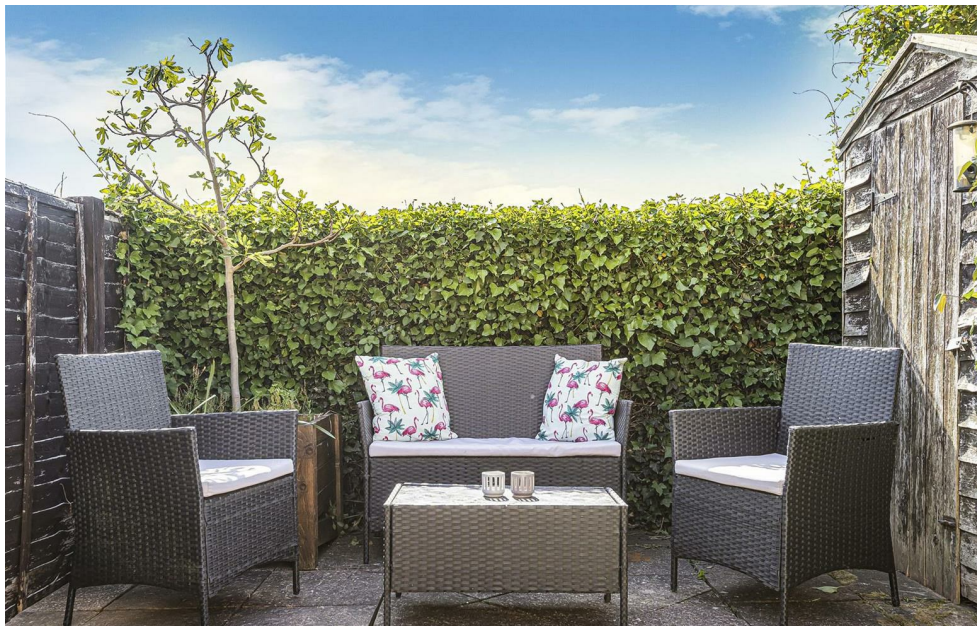


70 Fore Street, Hertford, Hertfordshire, SG14 1BY





70 Fore Street, Hertford, Hertfordshire, SG14 1BY

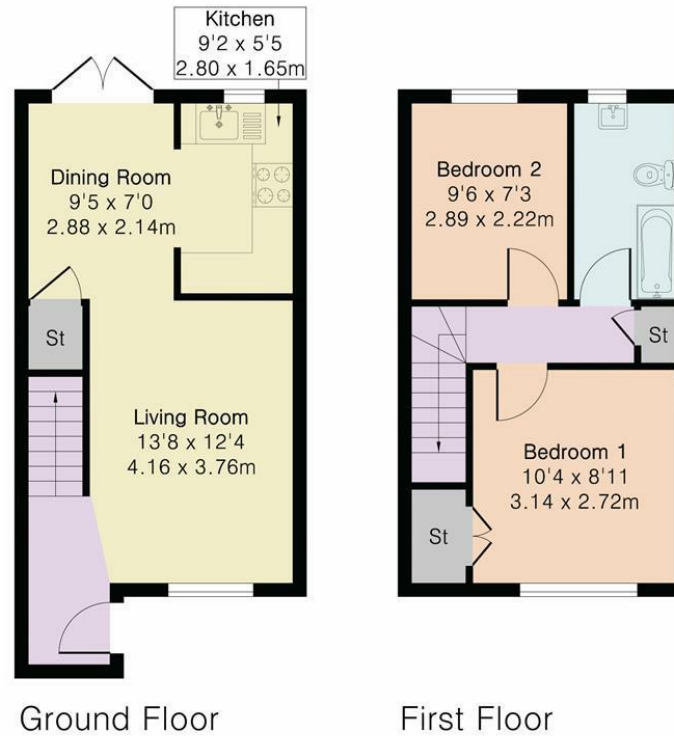


70 Fore Street, Hertford, Hertfordshire, SG14 1BY

Approximate Gross Internal Area 607 sq ft - 56 sq m

Ground Floor Area 311 sq ft – 29 sq m

First Floor Area 296 sq ft – 27 sq m



Although Pink Plan Ltd ensures the highest level of accuracy, measurements of doors, windows and rooms are approximate and no responsibility is taken for error, omission or misstatement. These plans are for representation purposes only as defined by RICS code of measuring practise. No guarantee is given on total square footage of the property within this plan. The figure icon is for initial guidance only and should not be relied on as a basis of valuation.



These particulars, whilst believed to be accurate are set out as a general outline only for guidance and do not constitute any part of an offer or contract. Intending purchasers should not rely on them as statements of representation of fact, but must satisfy themselves by inspection or otherwise as to their accuracy. No person in this firms employment has the authority to make or give any representation or warranty in respect of the property.



stevenoates.com