



**Oakhill Road, SW15**

**£500,000**

**Dexters**



## Oakhill Road, SW15

A beautifully presented two double bedroom apartment offering close to 750 sq ft of bright and stylish living space on the sought-after Oakhill Road in the heart of East Putney.

The property features a spacious reception room with ample room for both relaxing and entertaining, a contemporary fitted kitchen with space for dining, two well-proportioned double bedrooms and a modern bathroom. Finished with tasteful interiors throughout, the apartment also benefits from excellent natural light and useful external storage.

Ideally located for the amenities of Putney High Street and Wandsworth Town, with an excellent selection of cafés, restaurants and green open space of Wandsworth Park just a 5 min walk away. Transport links are superb, with East Putney Underground station (District Line), Putney mainline station and a number of bus routes all within easy reach, providing swift access into Central London.

### Features

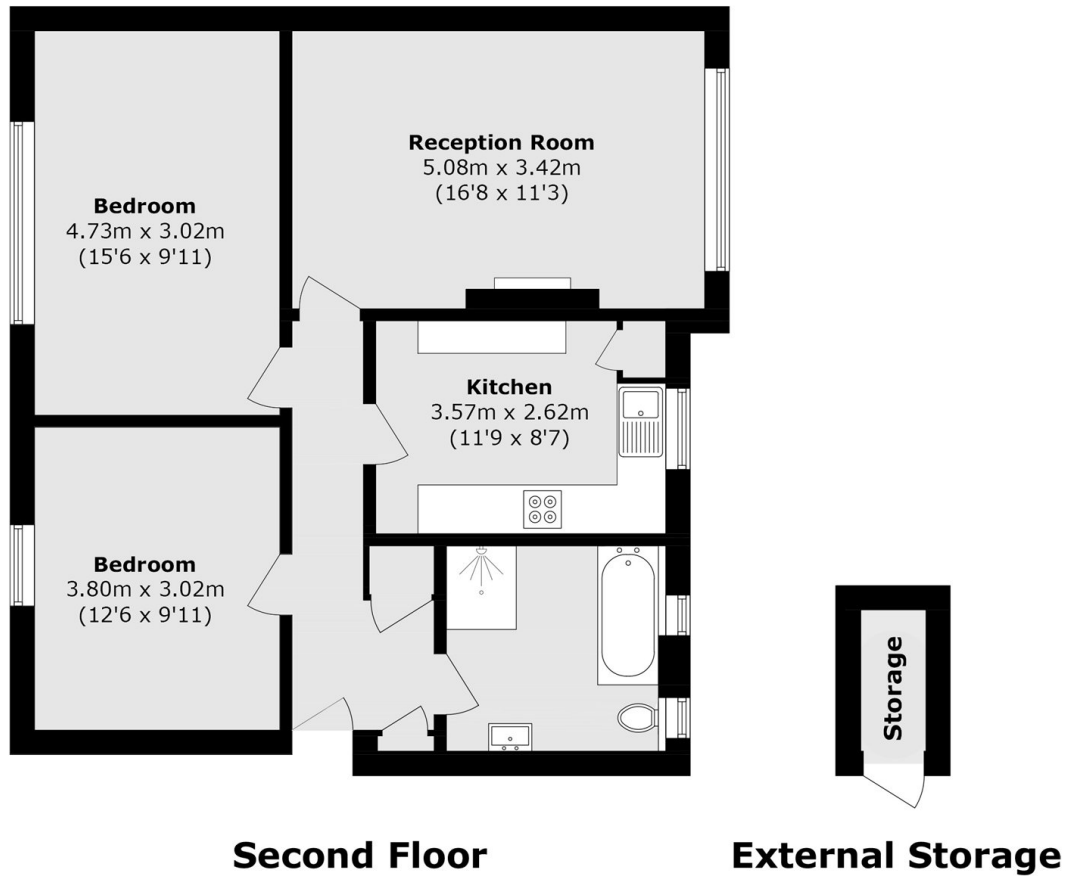
- 747 sq. ft
- Two Bedrooms
- Off Street Residents Parking
- Chain Free
- Top Floor
- Communal Garden







# Oakhill Road, London, SW15



Total Area (approx.): 69.4 sq. m (747.0 sq. ft)  
External storage Area (approx.): 1.3 sq. m (13.9 sq. ft)