



CABLE WALK, SE10

£625,000

Riverside apartment
Two bedrooms
Views of Canary Wharf
Two large balconies/terraces
Allocated parking space
Energy rating: b

@marshandparsons
marshandparsons.co.uk

MARSH &
PARSONS



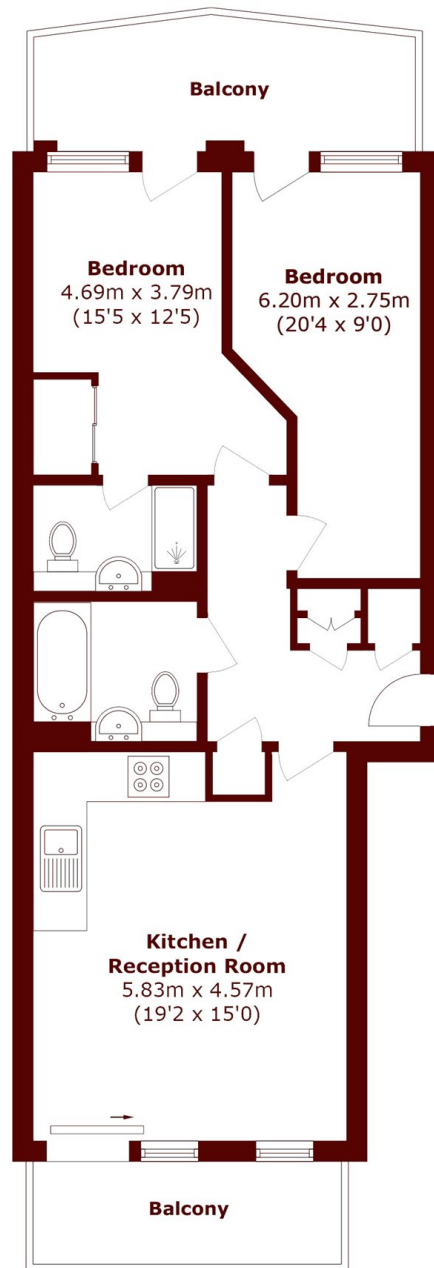
ABOUT THE PROPERTY

Beautiful and spacious riverside apartment featuring two large balconies/terraces and an allocated underground parking space. The interior comprises two large bedrooms, en suite shower room to principle bedroom, a family bathroom, an open plan kitchen and spacious living room. Added benefits include ample storage, one balcony overlooking a peaceful courtyard area for residents and the other with views of the Shard, Canary Wharf and the Cutty Sark.

North Greenwich station and O2 centre are within walking distance and in the opposite direction, Maze Hill station and Greenwich town centre for DLR, covered market, the royal park and Greenwich pier.



STEP INSIDE CABLE WALK



Total area (approx.): 73.5 sq. m (791.1 sq. ft)

Balcony area (approx.): 16.9 sq. m (181.9 sq. ft)

Greenwich
020 8312 8312

Energy Rating: B We aim to make our particulars both accurate and reliable. However, they are not guaranteed; nor do they form part of an offer or contract. If you require clarification on any points then please contact us, especially if you're traveling some distance to view. Please note that appliances and heating systems have not been tested and therefore no warranties can be given as to their good working order

**MARSH &
PARSONS**