

Northdown Close

Ruislip • • HA4 6JZ
Offers In Excess Of: £300,000



coopers
est 1986

Northdown Close

Ruislip • • HA4 6JZ

Situated within a quiet cul-de-sac in Northdown Close, Ruislip, this well-presented first-floor maisonette offers bright, comfortable living and an excellent layout across 542 sq.ft. Perfect for first-time buyers, downsizers or investors alike, the property combines generous room sizes with a highly convenient location. The accommodation comprises a spacious living room with ample space for both relaxation and dining, a well-proportioned kitchen, and two good-sized bedrooms, including a 12ft main bedroom with room for wardrobes. The property is completed by a neatly arranged bathroom and useful internal storage. Positioned in a desirable residential pocket known for its peace and privacy, Northdown Close provides easy access to Ruislip Manor and Ruislip Gardens stations, local shops, parks and well-regarded schools. This is a fantastic opportunity to secure a property in a sought-after area with strong long-term appeal.

TWO BEDROOMS

FIRST FLOOR MAISONETTE

CHAIN FREE

PRIVATE GARDEN

LIVING ROOM

KITCHEN

FAMILY BATHROOM

LEASEHOLD

IDEAL LOCATION

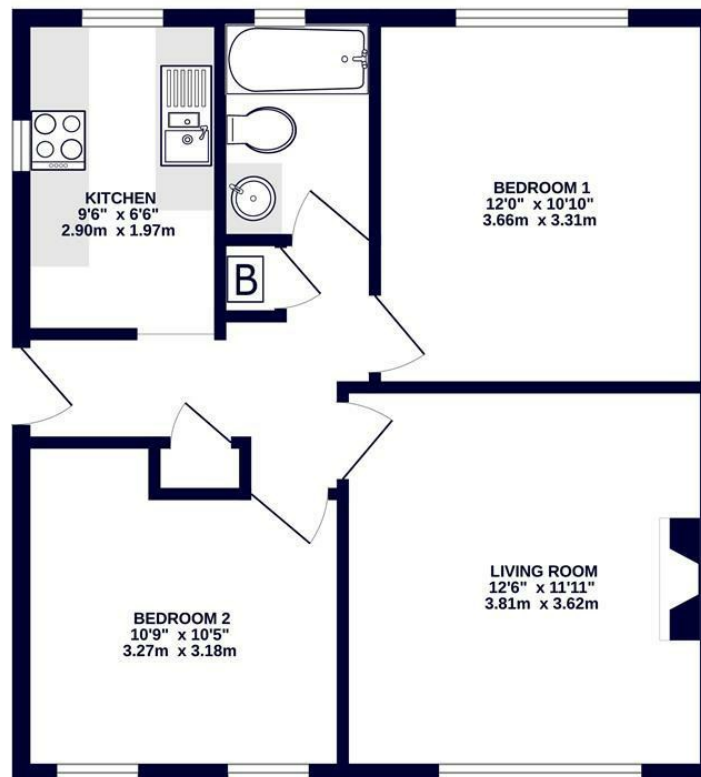
542 SQ.FT

These particulars are intended as a guide and must not be relied upon as statements of fact. Your attention is drawn to the Important Notice on the last page.





1ST FLOOR
542 sq.ft. (50.3 sq.m.) approx.



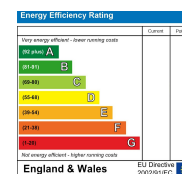
TOTAL FLOOR AREA: 542 sq.ft. (50.3 sq.m.) approx.
Whilst every attempt has been made to ensure the accuracy of the floorplan contained here, measurements of doors, windows, rooms and any other items are approximate and no responsibility is taken for any error, omission or mis-statement. This plan is for illustrative purposes only and should be used as such by any prospective purchaser. The services, systems and appliances shown have not been tested and no guarantee as to their operability or efficiency can be given.
Made with Metropix 5/2025



coopers
est 1986

71 Victoria Road, Ruislip Manor,
Middlesex, HA4 9BH
ruislipmanor@coopersresidential.co.uk

CoopersResidential.co.uk



Important Notice: These particulars, whilst believed to be accurate are set out as a general outline only for guidance and do not constitute any part of an offer or contract. Intending purchasers should not rely on them as statements or representation of fact, but must satisfy themselves by inspection or otherwise has the authority to make or give any representation or warranty in respect of the property.