



# Kensington Apartments

11 Commercial Street, E1

£3,500 per month  
(£807.69 per week)

A beautiful two bedroom apartment situated moments from Aldgate East station. The property boasts a spacious open plan reception room leading to private balcony, 24 hour concierge, residents gym and communal roof terrace.



# Kensington Apartments

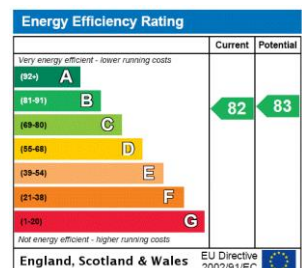
11 Commercial Street, E1

- TWO BEDROOMS
- TWO BATHROOMS
- OPEN PLAN LIVING SPACE
- FURNISHED
- PRIVATE BALCONY



This luxury 2 bedroom apartment is offered fully furnished. Situated on the 6th floor, the property boasts spacious reception with views over the city, 2 double bedrooms and en-suite to master bedroom, fully fitted open plan kitchen, generous sized balcony. The apartment benefits from floor to ceiling windows maximising natural light and views.

**Minimum Term:** 12 months  
**Deposit Required:** £0.00  
**Local Authority:** Tower Hamlets  
**Council Tax Band:** F  
**EPC Rating:** B  
**Furnished**



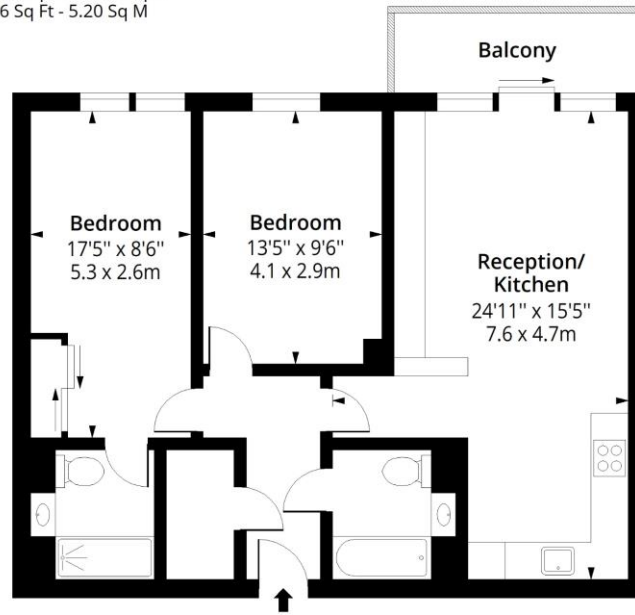
### Chestertons Tower Bridge Lettings

220 Tower Bridge Road  
 Tower Bridge  
 London  
 SE1 2UP  
 towerbridgelettingsusers@chestertons.co.uk  
 02073576911  
 chestertons.co.uk

Additional tenant charges apply (fees apply to non-AST tenancies only)  
 Tenancy Agreement Fee: £300  
 References per Tenant/Guarantor: £60  
 Inventory check (approx. £100 – £250 inc. VAT)  
 chestertons.co.uk/property-to-rent/applicable-fees

# Kensington Apartments, E1

Approx. Gross Internal Area 794 Sq Ft - 73.76 Sq M  
Approx. Gross Balcony Area 56 Sq Ft - 5.20 Sq M



## Sixth Floor

Floor Area 794 Sq Ft - 73.76 Sq M



Measured according to RICS IPMS2. Floor plan is for illustrative purposes only and is not to scale. Every attempt has been made to ensure the accuracy of the floor plan shown, however all measurements, fixtures, fittings and data shown are an approximate interpretation for illustrative purposes only. 1 sq m = 10.76 sq feet.

lpaplus.com

Date: 12/2/2025

