



Kenwyn Road, SW4

£2,600 Per calendar month

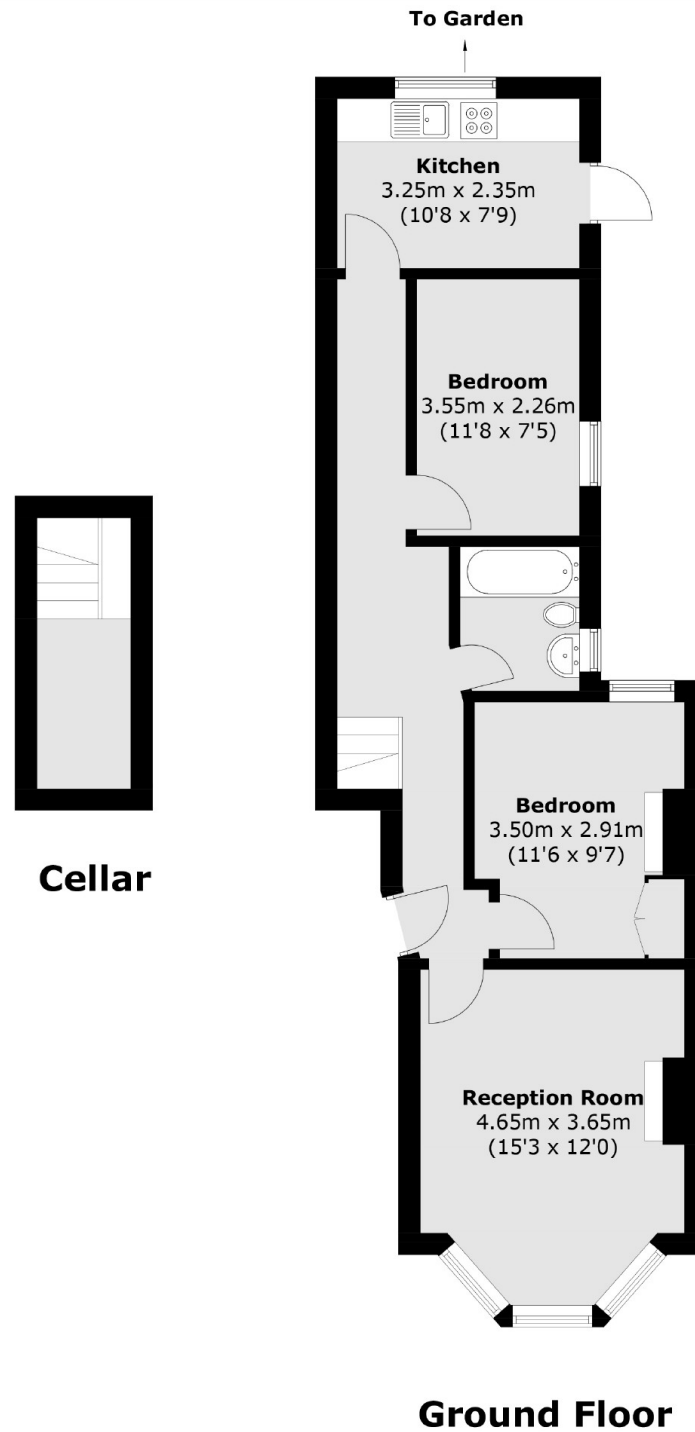
A ground floor garden flat in the heart of Clapham. The property has been recently decorated and offers two double bedrooms, a spacious reception room, separate eat-in kitchen and a private patio garden.

Just off the Clapham High Street, offering many local shops, cafés, bars and restaurants. This property is ideally located for young professional sharers.

Features

- Ground Floor Flat
- Private Small Patio
- Eat-In Kitchen
- Separate Reception Room
- Two Double Bedrooms
- Additional Basement Storage

Kenwyn Road, London, SW4



Total area (approx.): 63.7 sq. m (685.5 sq. ft)