



Swinton Park Road

Salford



£400,000

# Swinton Park Road

Salford

Stunning, Double Story and Single Story Extended Three Bedroom Semi-Detached Property! Boasting an open plan lounge, kitchen diner and a beautiful orangery complete with a roof lantern! Council Tax band: D

Tenure: Freehold

- Impressive, fully-extended three double bedroom semi-detached family home
- Overlooking pretty Oakwood Park to the rear
- Stylish and modern open plan family room to the rear complete with a modern fitted kitchen, scandi-designed lounge with herringbone wooden floor and dining space
- Would make a great family home, early viewing highly advised
- Three generously sized bedrooms and access to a fully converted loft room, which is currently used as an office, with the potential to convert a second large loft space
- Downstairs W.C. and utility space
- Two, three-piece modern bathroom suites
- Driveway to the Front Providing Off-Road Parking for Several Cars
- Close to Excellent Transport Links into Salford Quays, Media City and Manchester City Centre
- Close to Oakwood Park, Local Schooling and Within Easy Access of Salford Royal Hospital



HILLS



**Entrance Hallway**

**Kitchen/Lounge/Diner**

19' 2" x 17' 7" (5.84m x 5.35m)

**Lounge**

14' 5" x 11' 1" (4.39m x 3.39m)

**Orangery**

17' 2" x 9' 2" (5.22m x 2.79m)

**Utility Room**

**Downstairs W.C.**

**Landing**

**Bedroom One**

18' 5" x 9' 5" (5.61m x 2.86m)

**Bedroom Two**

11' 9" x 11' 0" (3.57m x 3.36m)

**Bedroom Three**

13' 3" x 7' 9" (4.03m x 2.37m)

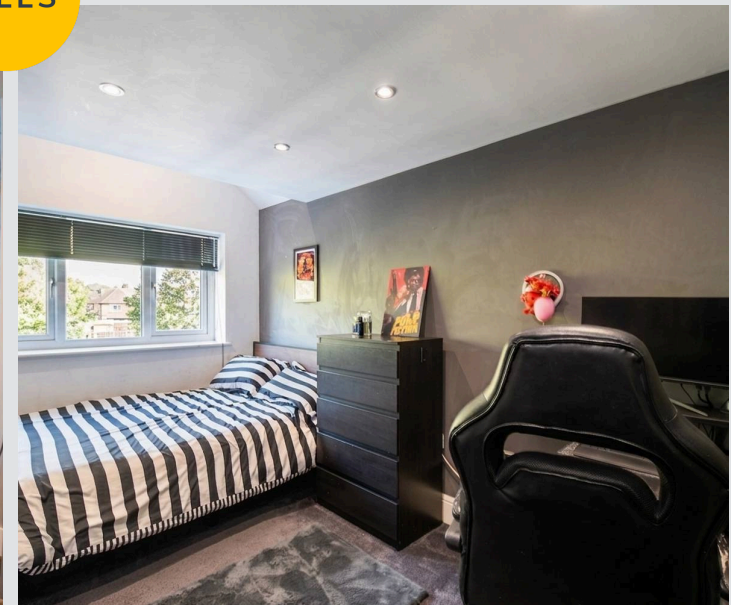
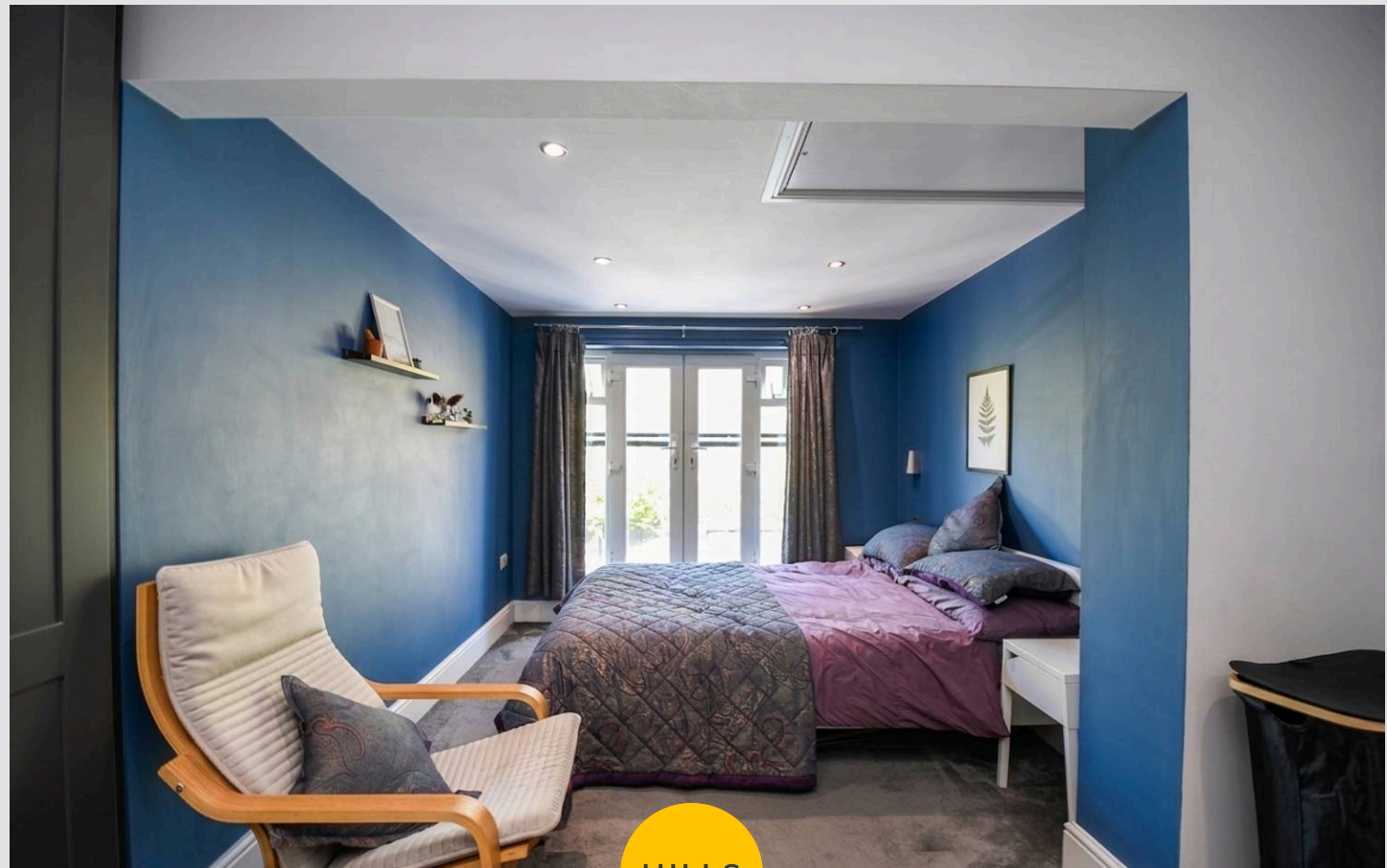
**Bathroom**

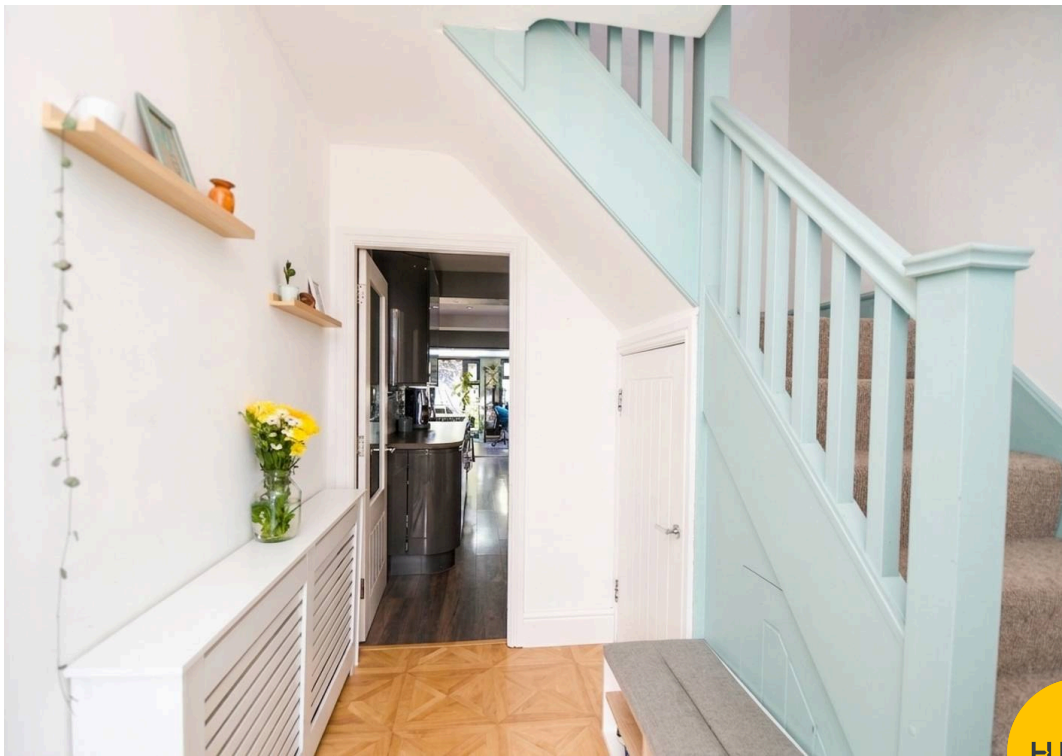
7' 7" x 5' 11" (2.32m x 1.80m)

**Shower Room**

7' 10" x 4' 8" (2.38m x 1.41m)

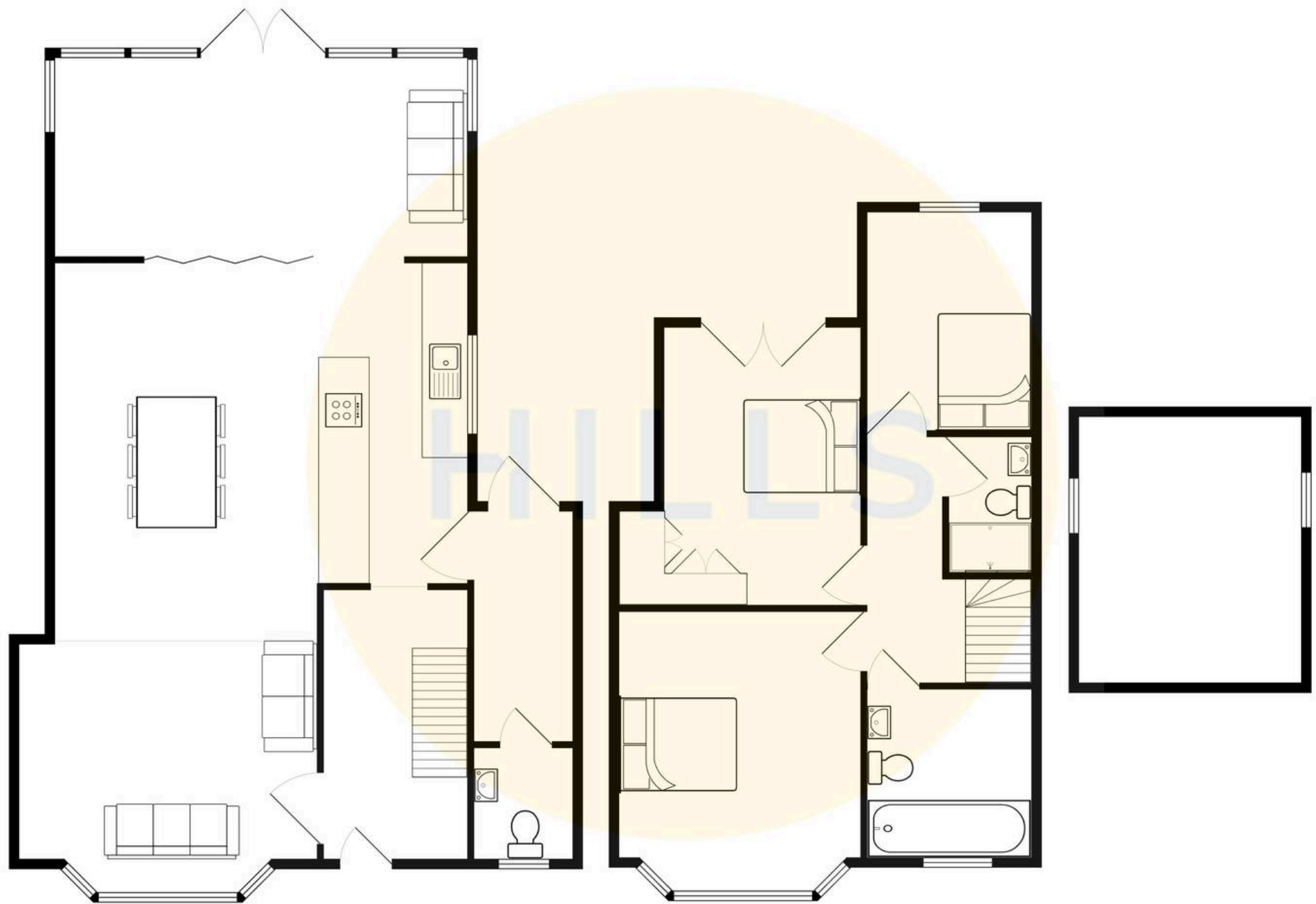
**Loft Room**





HILLS







## Hills | Salfords Estate Agent

Hills Residential, Sentinel House Albert Street – M30 0SS

0161 707 4900

[sales@hills.agency](mailto:sales@hills.agency)

[www.hills.agency/](http://www.hills.agency/)



By law, we are required to conduct anti-money laundering checks on all potential buyers and sellers. In line with HMRC guidelines, our trusted partner, Coadjute, will securely manage these checks on our behalf. A non-refundable fee of £45 + VAT per person will apply, and Coadjute will handle the payment. Once an offer is accepted, Coadjute will send a secure link for you to complete the biometric checks. These checks must be completed before we can send the memorandum of sale to all parties. PLEASE NOTE: The Agent has not tested any equipment, fixtures, fittings or services so cannot verify that they are in working order or fit for the purpose. References to the properties tenure are based on information supplied by the seller. You are advised to check the availability of this property before travelling any distance to view. Every effort has been made to ensure these particulars are correct and not misleading but their accuracy is not guaranteed nor do they form part of any contract.