

Hepworth Court, Grosvenor Waterside, Gatliff Road, Sloane Square SW1W 8QN

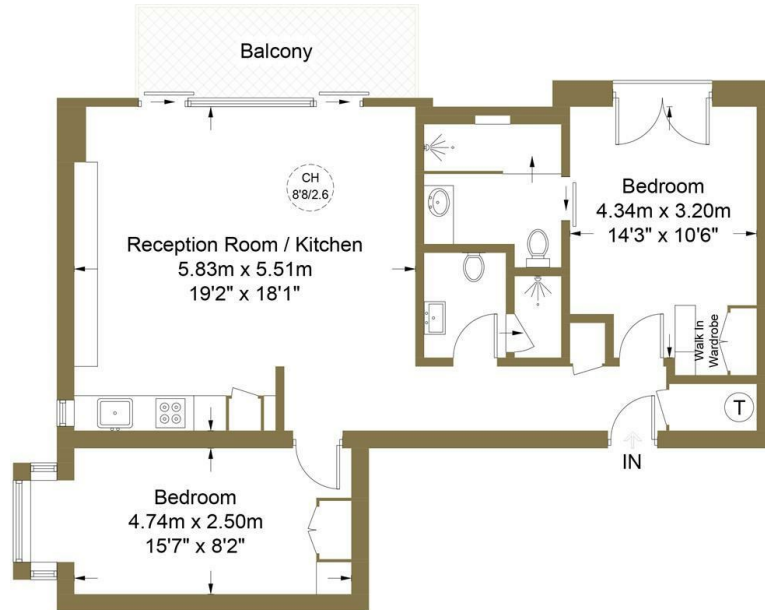
£1,677,000

- 24H CONCIERGE
- NEWLY REFURBISHED
- ONE SITE FOOD SHOP AND RESTAURANT
- PET FRIENDLY DEVELOPMENT
- ALLOCATED PARKING SPACE
- 2 BEDROOMS 2 BATHROOMS
- WALKING DISTANCE TO SLOANE SQUARE AND VICTORIA
- PRIVATE BALCONY
- UNDER FLOOR HEATING AND AIR COOLING
- MOMENTS AWAY FROM BATTERSEA PARK



Hepworth Court, SW1W

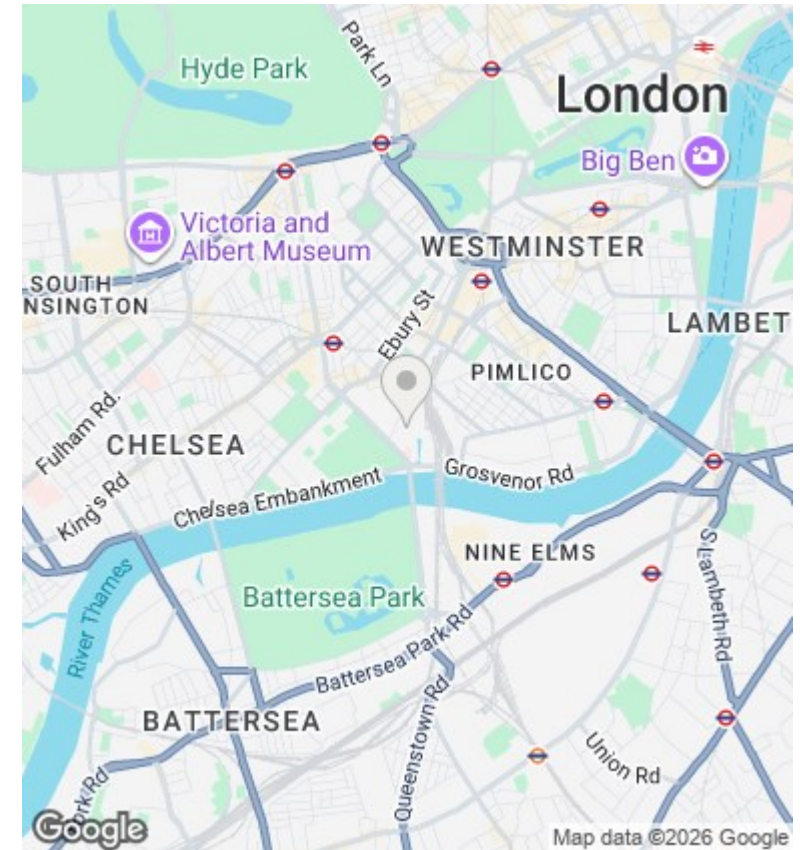
Approximate Gross Internal Area = 79.0 sq m / 850 sq ft



Fourth Floor



This plan is for layout guidance only. Not drawn to scale unless stated. Windows and door openings are approximate. Whilst every care is taken in the preparation of this plan, please check all dimensions, shapes and compass bearings before making any decisions reliant upon them. (ID983274)



Viewings

Viewings by arrangement only.
Call 02077225022 to make an appointment.

Council Tax Band

C

EPC Rating:

C

Energy Efficiency Rating		Current	Potential
<i>Very energy efficient - lower running costs</i>			
(92 plus)	A		
(81-91)	B		
(69-80)	C	80	81
(55-68)	D		
(39-54)	E		
(21-38)	F		
(1-20)	G		
<i>Not energy efficient - higher running costs</i>			
England & Wales		EU Directive 2002/91/EC	