

# Frank Harris & Co.



## Cottesloe Mews, SE1

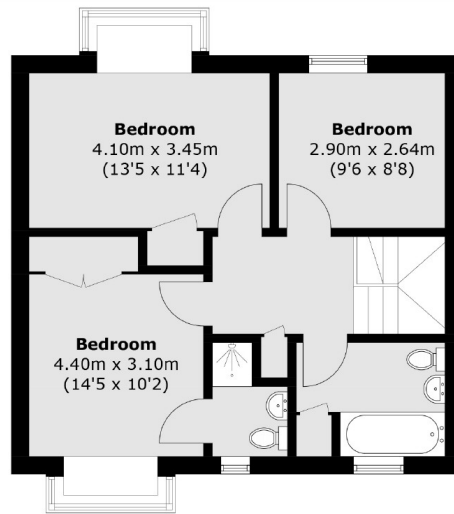
£4,000 Per week

A charming three double bedroom, two bathroom Mews House located in a private gated street. This property offers both a front and back garden, separate living space and also an additional downstairs W/C

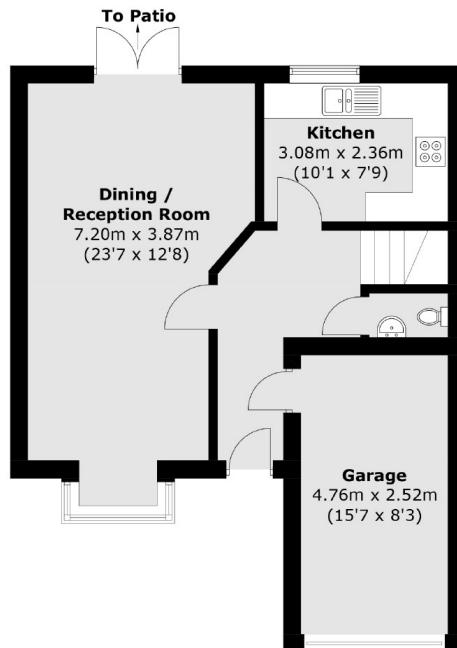
This property is close to a good range of shops, bars, restaurants, cafes and theatres, and is well located for Waterloo and Lambeth North Station.

- Three Double Bedrooms • Two Bathrooms • House •
- Garden • Private Road • Furnished •

# Frank Harris & Co.



**First Floor**



**Ground Floor**

Total area (approx.): 103.3 sq. m (1,111.9 sq. ft)

Frank Harris & Co. South Bank and Waterloo  
123 Stamford Street, London,  
SE1 9NN  
020 7590 7100  
southbanklettings@frankharris.co.uk

Energy Rating: . We aim to make our particulars both accurate and reliable. However they are not guaranteed; nor do they form part of an offer or contract. If you require clarification on any points then please contact us, especially if you're traveling some distance to view. Please note that appliances and heating systems have not been tested and therefore no warranties can be given as to their good working order.

