



HARDINGS



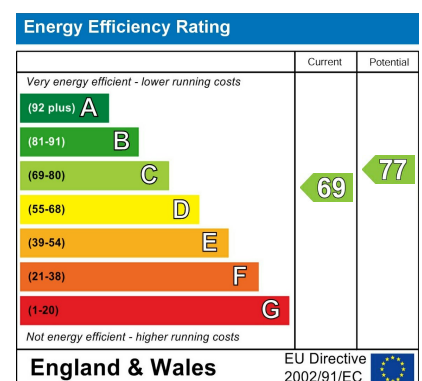
The Willows
Guide Price £995,000





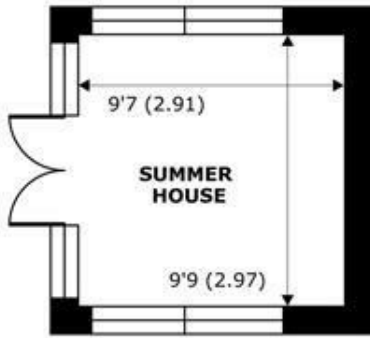
OPEN HOUSE by appointment Saturday 30th May 1pm -3pm. *Private Thames Mooring* A spacious 3/4 bedroom period property located in this idyllic riverside setting on the fringes of Windsor, just a short drive to Windsor town centre with its full array of shops, restaurants, cafes, bars and direct British Rail links to London (Waterloo, Paddington & The Elizabeth Line). Featuring a larger than average riverside garden with Thames frontage and private mooring, the property further benefits from ample allocated parking, exposed beams and a charming open plan living/dining room with Adam style fireplace.

Windsor is easily accessible via the major motorway networks of the M3, M4, M25 and M40 and London Heathrow is just 12 miles. No onward chain.

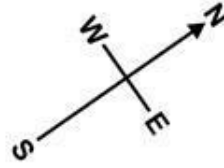


Features

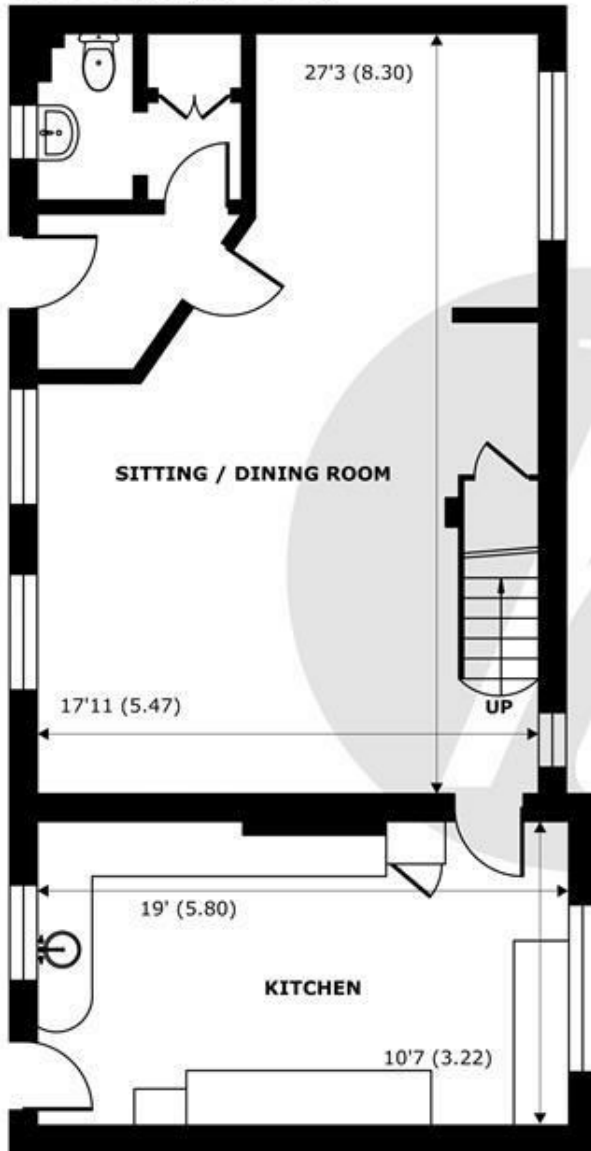
- Characterful Riverside Development
- Private Thames Mooring
- Separately Accessed Riverside Garden
- Three Allocated Parking Spaces
- Summer House with Two Patio Areas
- Converted Coach House
- Interconnected Study/ Bedroom 4
- Principle Bedroom with Ensuite
- Charming open plan Living Dining Room.
- Located on fringes of Windsor Town Center



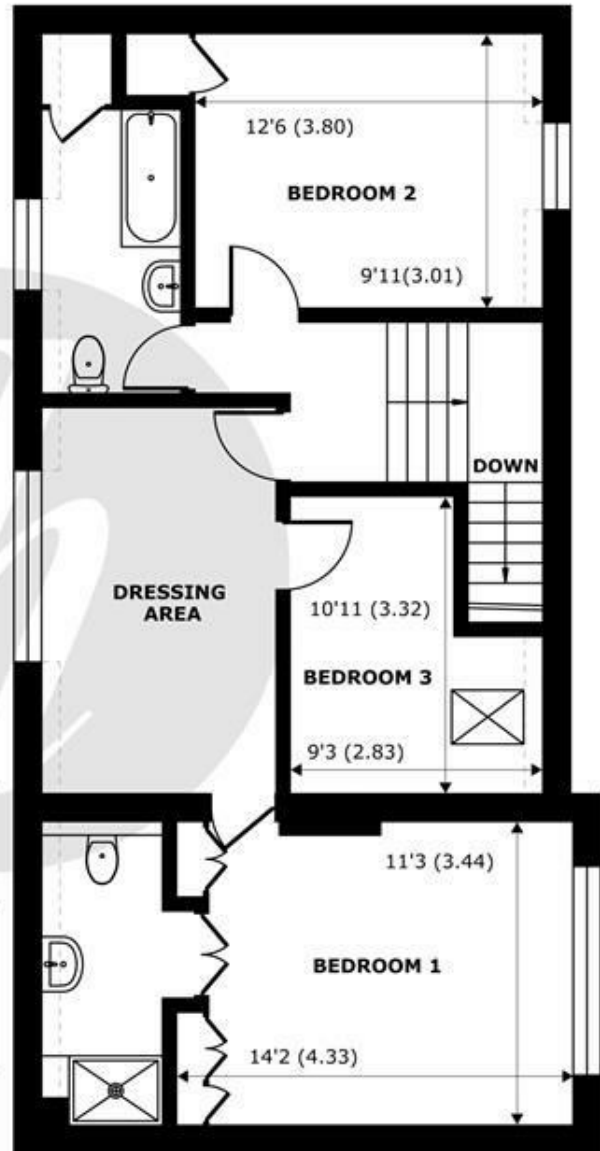
OUTBUILDING
abt 135 SQFT (12.5 SQMT)



Denotes restricted head height



GROUND FLOOR
abt 832 SQFT (77.2 SQMT)



FIRST FLOOR
abt 832 SQFT (77.2 SQMT)

The Willows, Windsor, SL4

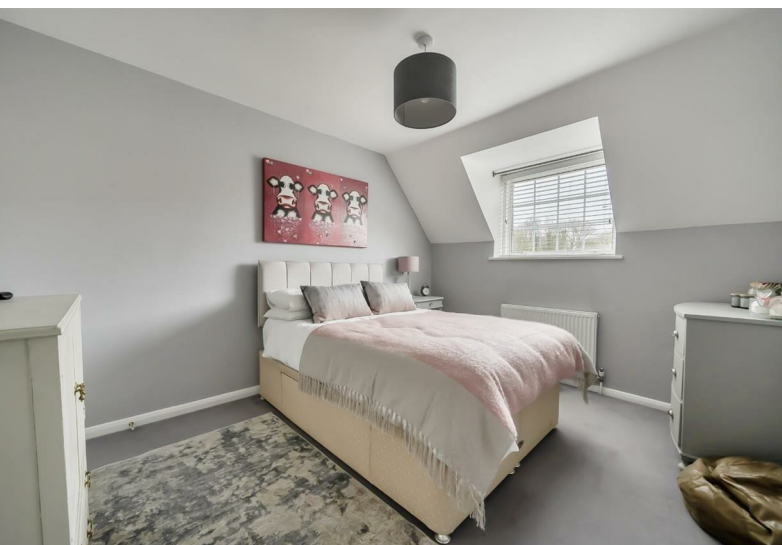
Approximate Internal Area = 1400 sq ft / 130 sq m (Exclude Outbuildings)
 Approximate External Area = 1664 sq ft / 154.5 sq m (Exclude Outbuildings)
 Limited Use Area(s) = 28 sq ft / 2.6 sq m

For identification only - Not to scale



Floor plan produced in accordance with RICS Property Measurement 2nd Edition, Incorporating International Property Measurement Standards (IPMS2 Residential). © nichecom 2026. Produced for Hardings. REF: 1421169





11 High Street, Windsor, Berkshire, SL4 1LD,
T: 01753 833 118 | E: info@hardings.co.uk
www.hardings.co.uk

