



Goldhurst Terrace NW6

Parkheath
Sold on Service





Goldhurst Terrace, NW6

£550,000

Share of Freehold

- Well-presented first floor apartment set within a charming period conversion
- Beautifully bright south-facing reception room with bay window
- Semi open-plan kitchen
- Separate utility cupboard
- Principle bedroom with fitted wardrobes and ensuite shower room
- Second bedroom with fitted wardrobes
- Positioned within easy walking distance of South Hampstead Overground Station, Finchley Road and Swiss Cottage Underground Station (Jubilee & Metropolitan lines)
- Highly desirable South Hampstead conservation area location
- Chain free
- EPC: Rating C, Council Tax: Camden band E

Belsize Park/Hampstead
208 Haverstock Hill
NW3 2AG
Sales 020 7431 1234
Lettings 020 7431 3104
nw3@parkheath.com

South/West Hampstead
192 West End Lane
NW6 1SG
Sales & Lettings
Tel 020 7794 7111
192@parkheath.com

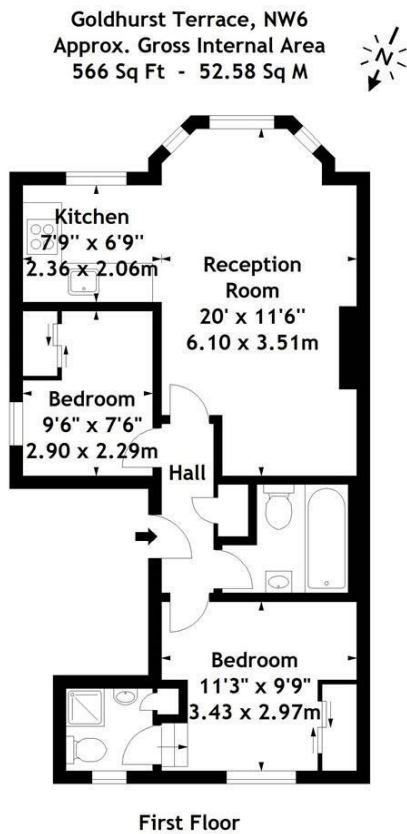
Kensal Rise
54-56 Chamberlayne Rd
NW10 3JH
Tel 020 8960 4845
kensal@parkheath.com

Property Management
192 West End Lane
NW6 1SG
020 7433 6174
pm@parkheath.com

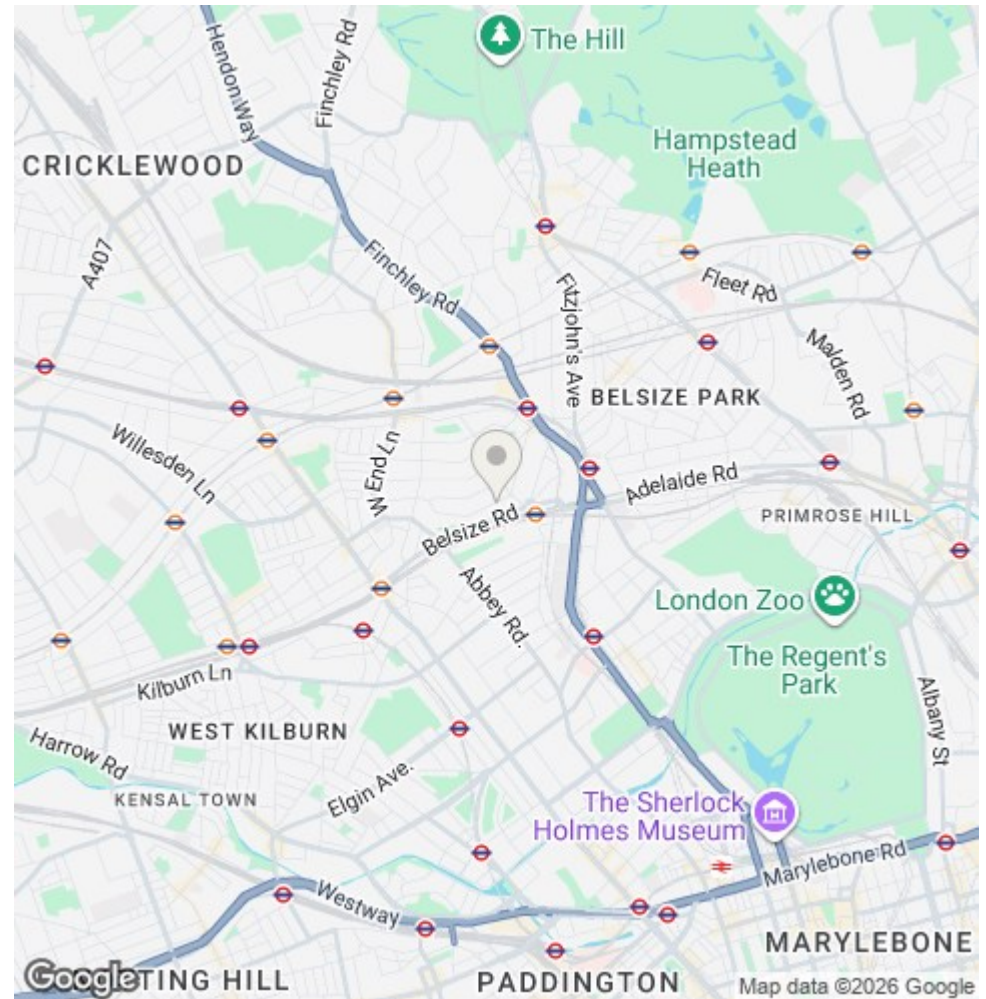
Parkheath
Sold on Service

Camden Tax band E

www.parkheath.com



Measured in accordance with RICS guidelines. Every attempt is made to ensure accuracy, however all measurements are approximate. This floor plan is for illustrative purposes only and is not to scale.
 © Datography Ltd 2014
 Photographs * Floorplans * Virtual Tours
 Tel: 0845 643 4401 www.dataoraphv.com



The particulars do not constitute part of an offer or contract. The particulars, including text, photographs and plans, are for the guidance only of prospective purchasers/tenants and must not be relied upon as statements of fact. The descriptions provided therein represent the opinion of the author and whilst given in good faith should not be construed as statements of fact. Nothing in these particulars shall be deemed a statement that the property is in good condition or otherwise or that any services or facilities are in good working order. All measurements are approximate