



Neville Road, Castle Bromwich  
Birmingham, B36 9HP

Offers in Excess of £330,000

Set within a popular residential location, this much improved three bedroom semi-detached family home offers beautifully presented accommodation, generous outdoor space and the added benefit of being sold with no onward chain. Lovingly reconfigured and enhanced over the years, the property is ideal for the modern family, combining practical living space with a stylish, boho-chic finish throughout.

The ground floor includes a porch leading through to a welcoming entrance, a gorgeous lounge with elegant bay window and impressive media wall, creating a warm and inviting space to relax. To the rear is the standout open-plan fitted kitchen diner, thoughtfully designed as the heart of the home. The kitchen offers a range of fitted units and integrated appliances including an electric hob, cooker, wine cooler and fridge freezer, while the dining area provides excellent space for everyday family meals and entertaining. The layout flows beautifully and gives the home a bright, sociable feel.

To the first floor are three well-proportioned bedrooms, together with a striking contemporary family shower room featuring a large walk-in shower enclosure, stylish wood-effect feature panelling and recessed display/storage niches. There is also a separate W/C, adding further convenience for family living. The property further benefits from excellent storage options, including a boarded loft with pull-down ladder, ideal for those needing additional practical space.

Externally, the home really comes into its own. To the rear is an extensive south-east facing private garden, laid partly to patio and partly to lawn, offering multiple seating areas and a superb outside bar — perfect for summer entertaining, family gatherings or simply enjoying the garden throughout the day. There is also a garage and driveway parking to the front.

A stylish, spacious and much-loved family home with fantastic lifestyle appeal, generous gardens and no onward chain — early viewing is highly recommended.

Tenure: We can confirm the property is Freehold.

Council Tax Band: We can confirm the Council Tax Band is C.

Services Connected: Electric, gas, water & drainage.

Viewings: Strictly via appointment through our Castle Bromwich Residential Sales Department on 0121 796 8909

or via [castle.bromwich@paulcarrestateagents.co.uk](mailto:castle.bromwich@paulcarrestateagents.co.uk)



## Room Measurements

**Living Room 16' 5" x 11' 6" (5.00m x 3.50m)**

**Kitchen/Diner 17' 9" x 11' 0" (5.41m x 3.35m)**

**Bedroom One 16' 6" x 9' 2" (5.03m x 2.79m)**

**Bedroom Two 11' 0" x 9' 2" (3.35m x 2.79m)**

**Bedroom Three 9' 0" x 7' 10" (2.74m x 2.39m)**

**Bathroom 8' 0" x 7' 11" (2.44m x 2.41m)**

**Toilet 4' 11" x 2' 10" (1.50m x 0.86m)**

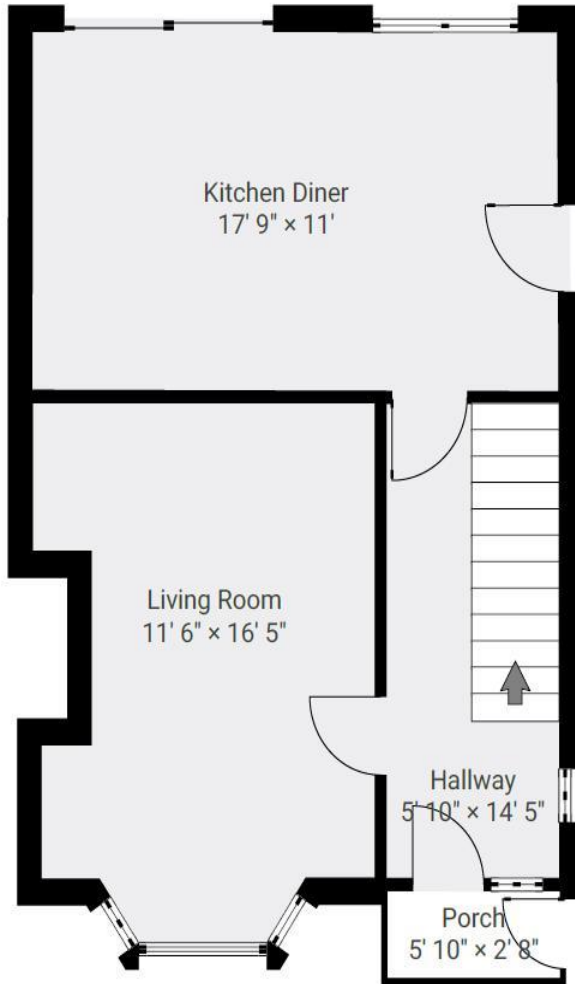




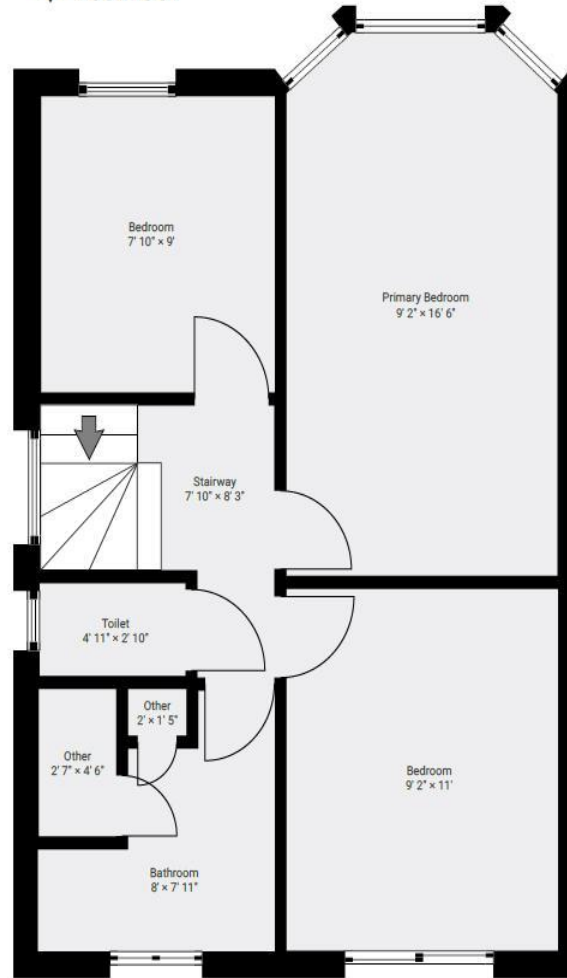
# Floor Plan

This floor plan is not drawn to scale and is for illustration purposes only

## ▼ Ground Floor



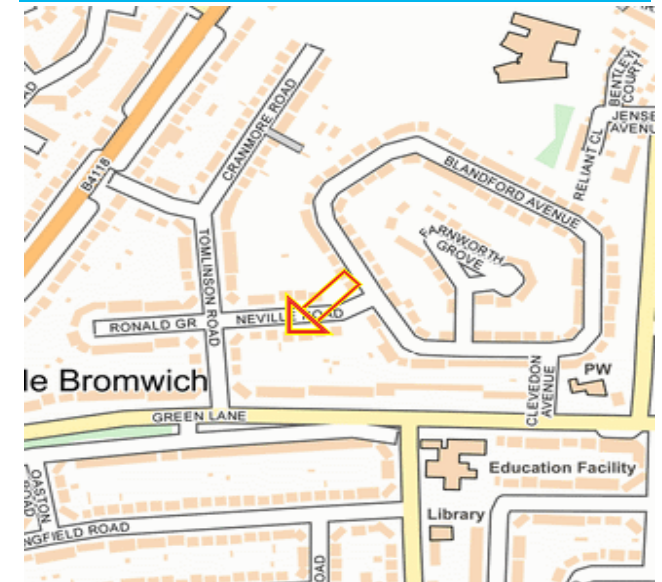
## ▼ 1st Floor



## Energy Performance Rating

Score	Energy rating	Current	Potential
92+	A		
81-91	B		82 B
69-80	C		
55-68	D	58 D	
39-54	E		
21-38	F		
1-20	G		

## Map Location







**Agent's Note:**

Every care has been taken with the preparation of these Sales Particulars but they are for general guidance only and complete accuracy cannot be guaranteed. If there is any point which is of particular importance, professional verification should be sought. The mention of any fixtures, fittings and/or appliances does not imply they are in full efficient working order as they have not been tested. All dimensions are approximate. Photographs are reproduced for general information and it cannot be inferred that any item shown is included in the sale. These Sales Particulars do not constitute a contract or part of a contract. Came on the market: 2nd June 2026

Identity Verification Fee - We are required by law to conduct anti-money laundering checks on all those buying a property as part of our due diligence. As agents acting on behalf of the seller, we are required to verify the identity of all purchasers once an offer has been accepted, subject to contract. The initial checks are carried out on our behalf by Lifetime Legal. A non-refundable administration fee of £40 + VAT (£48 including VAT) applies which covers the cost of obtaining relevant data and any manual checks and monitoring which might be required. This fee will need to be paid by you in advance of us issuing a memorandum of sale, directly to Lifetime Legal, and is non-refundable.