



FREEHOLD

House - Semi-Detached

**112 MORTON WAY,  
LONDON, N14 7AJ**

Asking Price

**£850,000**

FEATURES

- Large Semi Detached House - 1722 sq.ft
- 78' South Facing Rear Garden
- Two Receptions
- Driveway and Garage
- In Minchenden Estate
- Three Bedrooms
- Guest Cloakroom
- Cellar



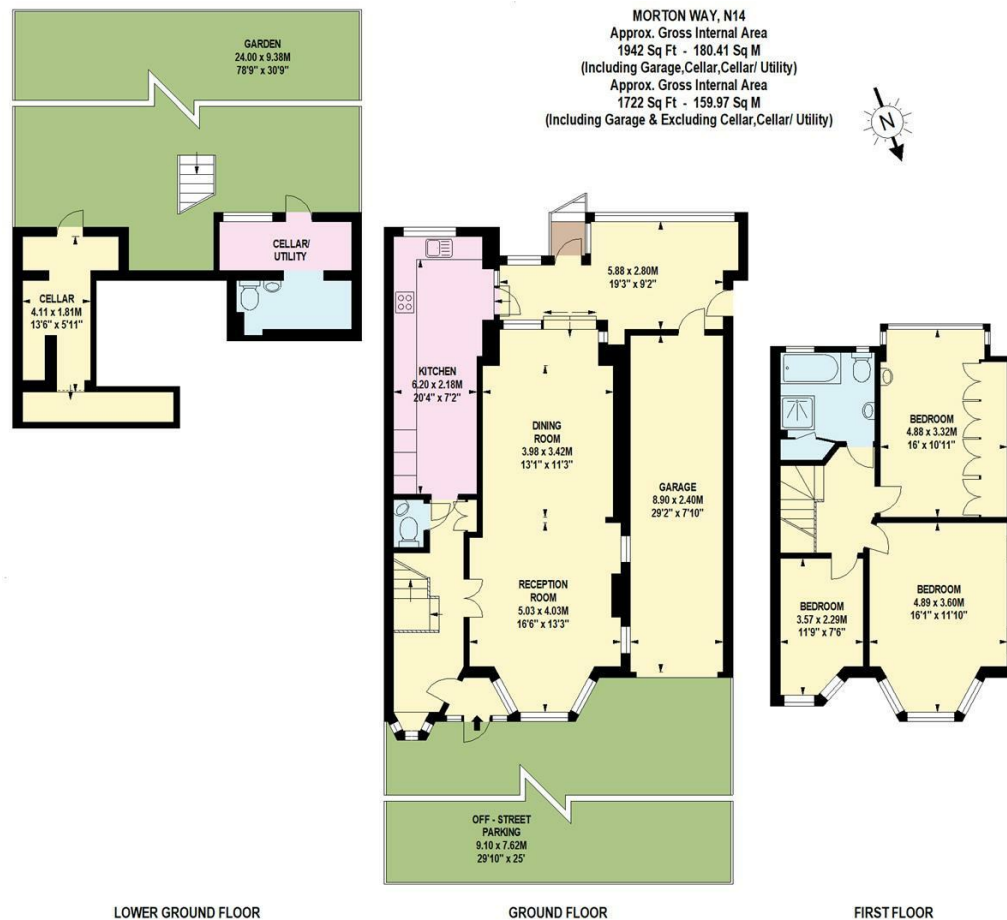
**RASH & RASH**

# 3 Bedroom House - Semi-Detached located in London

A charming Cox built family home, enjoying a highly desirable position with direct south facing views over Amos Park. This attractive property offers bright and well-balanced accommodation across its current layout, with enormous scope for further enhancement and extension (subject to the usual planning consents).

The ground floor provides generous living space, including a spacious reception room to the front, a separate dining room, and a well proportioned kitchen. The layout lends itself perfectly to modernisation or reconfiguration, particularly with the potential to extend to the rear at garden level, as many neighbouring properties have done. A notable feature is the substantial garage running the full length of the house to the side, offering excellent storage or further development potential, alongside off-street parking.

Upstairs, the property comprises three bedrooms and a family bathroom, with ample natural light throughout. The south facing aspect ensures a bright and airy feel, while also offering stunning outlooks over the greenery of Amos Park. There is also clear potential to extend into the loft space, with several nearby homes having successfully created additional bedrooms and even expanded into four storey accommodation.



Call us on

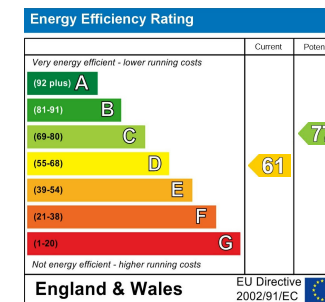
**02088822828**

[info@rashandrash.com](mailto:info@rashandrash.com)

<https://www.rashandrash.com/>

**Council Tax Band**

**F**



Agents Note: Whilst every care has been taken to prepare these particulars, they are for guidance purposes only. All measurements are approximate and are for general guidance purposes only and whilst every care has been taken to ensure their accuracy, they should not be relied upon and potential buyers are advised to recheck the measurements.

