

Buy. Sell. Rent. Let.



Castle Street, Grimsby



3



1



2

When it comes to
property it must be


lovelle



Offers in excess of £60,000



ATTENTION INVESTORS!

A spacious three bedroom mid-terraced house currently let, lending itself well for BTL investors.

Key Features

- Attention Investors
- Three bedrooms
- Two reception rooms
- Town centre location
- Currently LET
- Majority uPVC DG & GCH
- EPC rating C
- Tenure: Freehold



* ATTENTION BUY TO LET INVESTORS * Lovelle offer to market this spacious three bedroom mid-terrace house, in need of some modernisation, situated within a well-established area of Grimsby Town Centre. The property is currently LET on an assured shorthold tenancy producing £120 rent per week / £6,240 per annum . The accommodation briefly comprises of, a welcoming entrance hall, two spacious reception rooms, kitchen, rear lobby, ground floor bathroom, landing with separate wc and three bedrooms. Externally the property has front and rear gardens. The property is majority uPVC double glazed and gas central heated. Viewings are recommended.

Room Measurements

Lounge 4.21m X 3.58m Sitting Room 4.15m X 3.58m Kitchen 3.57m X 2.69m Bedroom 1 3.65m X 4.15m Bedroom 2 3.21m X 3.58m Bedroom 3 2.30m X 2.70m

Disclaimer

We endeavour to make our sales particulars accurate and reliable, however, they do not constitute or form part of an offer or any contract and none is to be relied upon as statements of representation or fact. Any services, systems and appliances listed in this specification have not been tested by us and no guarantee as to their operating ability or efficiency is given. All measurements have been taken as a guide to prospective buyers only, and are not precise. If you require clarification or further information on any points, please contact us, especially if you are travelling some distance to view.

Mobile and broadband

It is advised that prospective purchasers visit checker . ofcom . org . uk in order to review available wifi speeds and mobile connectivity at the property.

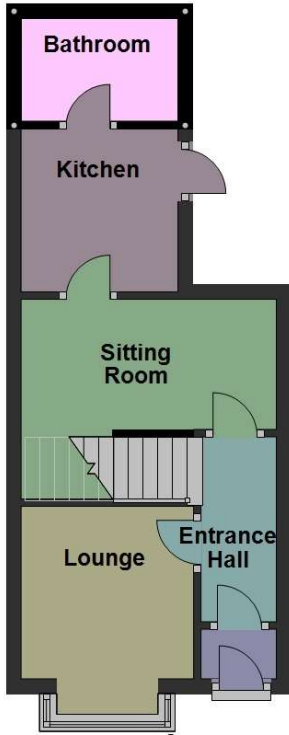
Council Selective Licencing

We must advise the property sits within the designated area for 'Council Selective Licencing', purchasers are strongly advised to make their own enquiries.

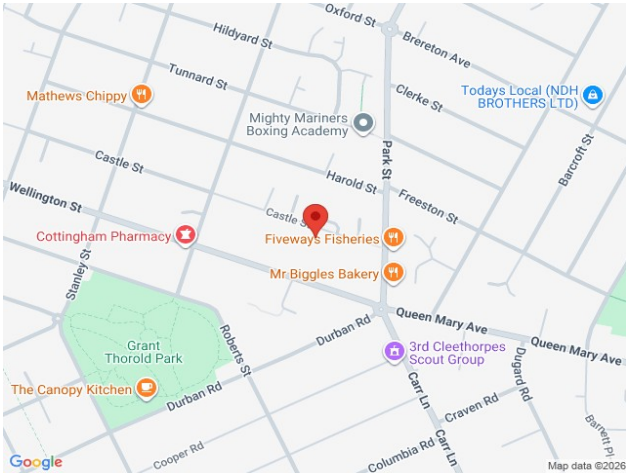
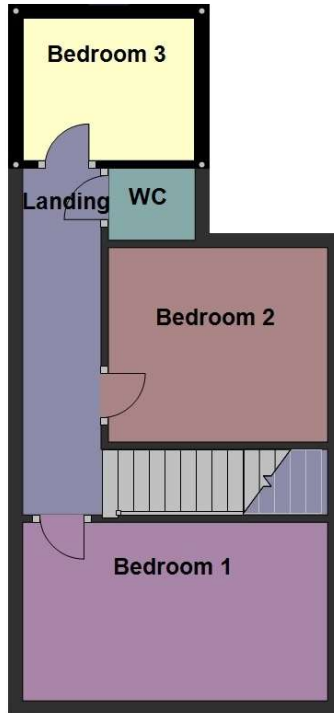


Ground Floor

*please be advised that the provided floorplans are not drawn to scale.



First Floor



When it comes to **property**
it must be

lovelle

01472 251918

grimsby@lovelle.co.uk

