

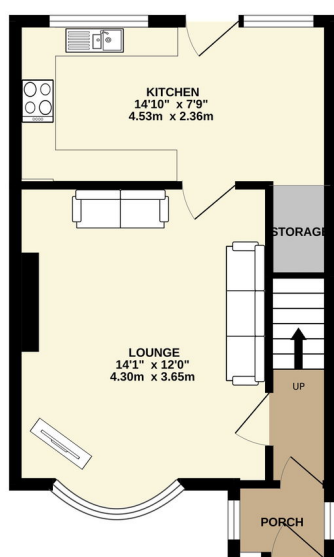
**Chamberlain Crescent, Shirley, B90**  
**£300,000**

3  1  1

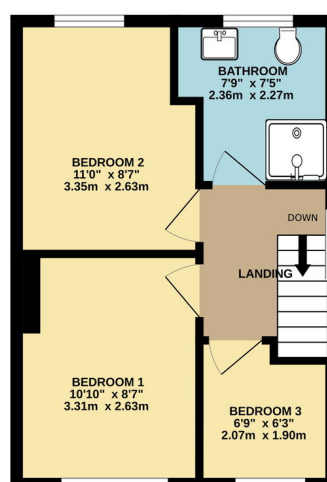


- Charming three-bedroom semi-detached family home on Chamberlain Crescent, Shirley. B90
- Spacious rear garden
- Driveway
- Double Gazed, Central Heating
- Freehold
- Modern family bathroom updated in late 2025 with a sleek suite and electric shower
- Garage and large wood shed on Concrete base 1.8 mar W X 3.6 mar
- Excellent location with nearby Shirley and Solihull train stations, Shirley Park within walking distance

GROUND FLOOR



1ST FLOOR



Whilst every attempt has been made to ensure the accuracy of the floorplan contained here, measurements of doors, windows, rooms and any other items are approximate and no responsibility is taken for any error, omission or mis-statement. This plan is for illustrative purposes only and should be used as such by any prospective purchaser. The services, systems and appliances shown have not been tested and no guarantee as to their operability or efficiency can be given.  
Made with Metropix C200L

Welcome to this charming three-bedroom semi-detached family home located on Chamberlain Crescent, Shirley, Solihull. Perfectly positioned in a desirable area, this well maintained property offers comfortable living space with modern updates throughout.