



AWARDED FOR
MARKETING | SERVICE | RESULTS



16 Fairfield Avenue, Watford
£600,000



 fairfieldestates



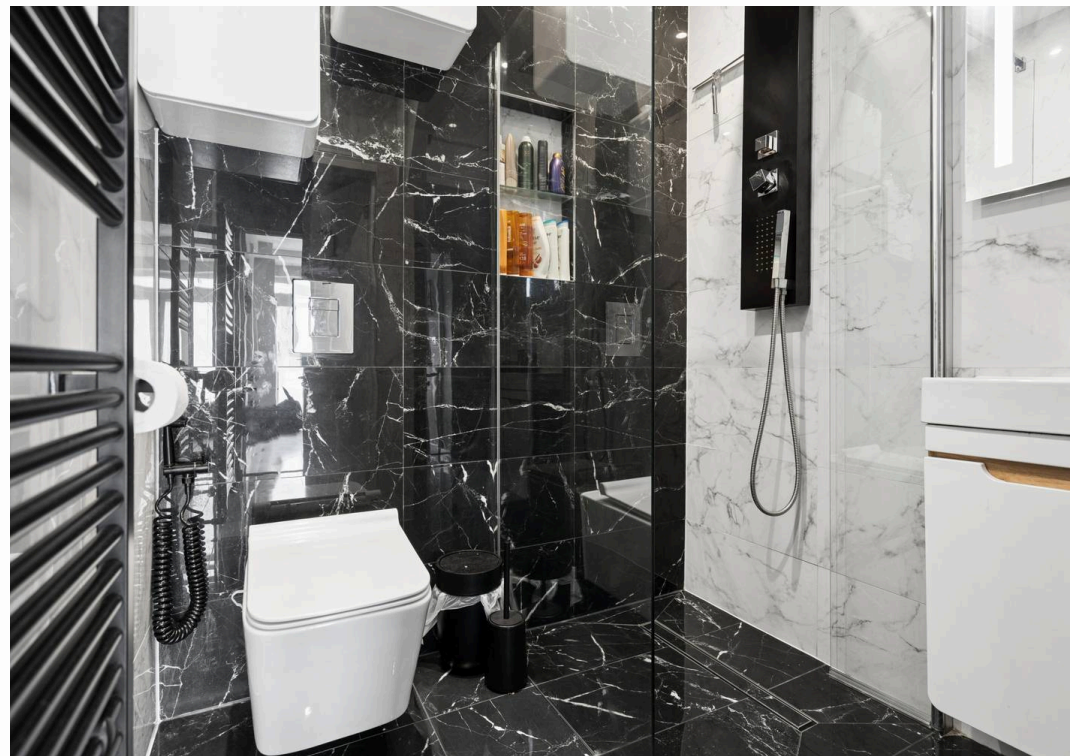
16 Fairfield Avenue

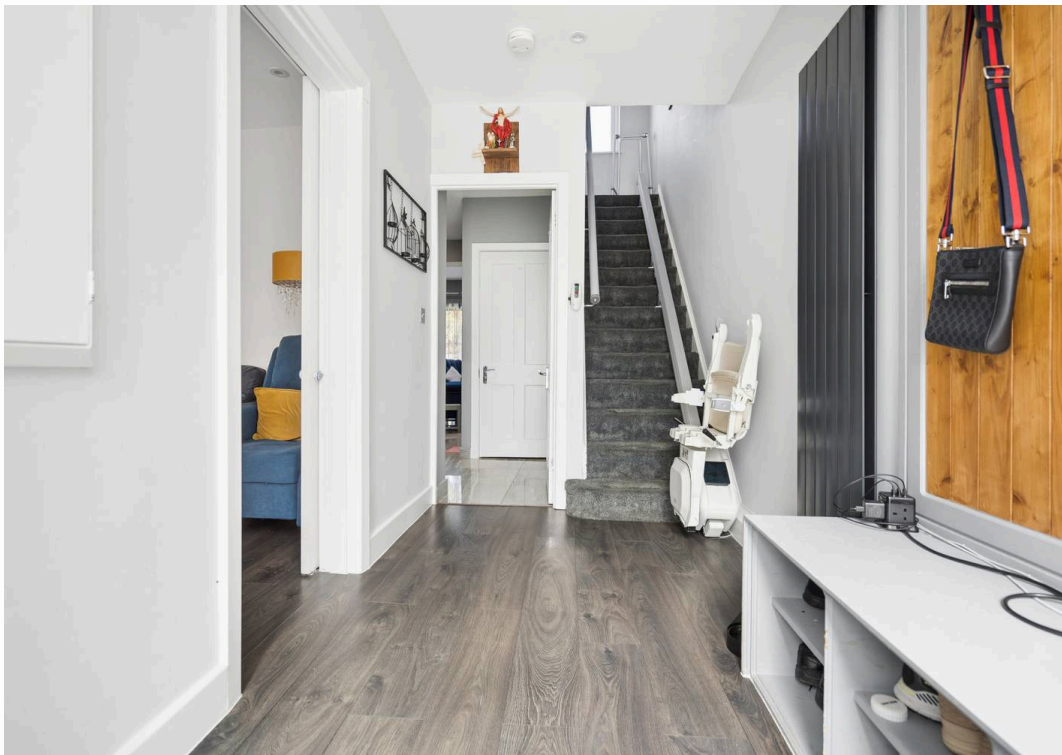
Watford, Watford

This outstanding purpose-built terrace house presents an exceptional opportunity to acquire a beautifully maintained home in a highly sought-after location, just minutes' walk from Carpenders Park station. Constructed with enduring brick, the property has been thoughtfully extended on the ground floor, resulting in an impressive 1,141 square feet of versatile living accommodation. The interior is presented in exceptional condition throughout, reflecting a meticulous standard of care and attention to detail. Upon entering, you are welcomed into a spacious hallway that leads to a bright and generously proportioned reception room, ideal for both relaxing and entertaining. The ground floor extension has created a superb open-plan kitchen and dining area, featuring high-quality fittings, ample storage, and sleek work surfaces, making it the heart of the home. The property boasts three well-sized double bedrooms, each offering abundant natural light and ample space for storage or study areas and fitted wardrobes. Two contemporary bathrooms (one on each floor) are finished to an excellent standard, incorporating stylish fixtures, modern tiling, and practical layouts to suit busy family life. Additional features include efficient gas central heating, double glazing throughout, and tasteful neutral décor, which enhances the sense of space and light. The house further offers off-street parking for two to three cars, providing a rare convenience in this residential area. The layout has been carefully considered to maximise both comfort and











Approximate Gross Internal Area
Ground Floor = 59.4 sq m / 639 sq ft
First Floor = 46.6 sq m / 502 sq ft
Total = 106 sq m / 1,141 sq ft

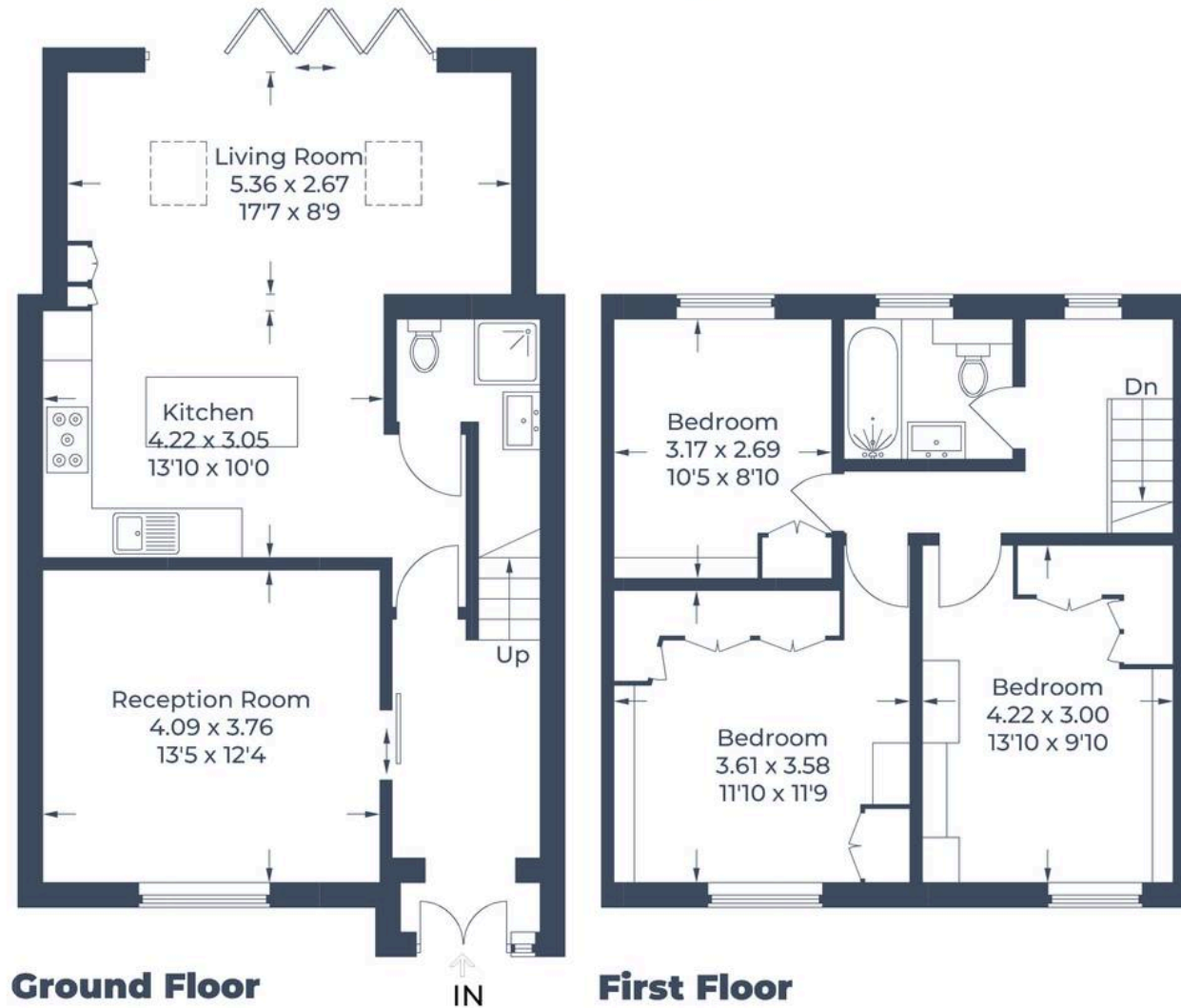


Illustration for identification purposes only,
measurements are approximate, not to scale.

© CJ Property Marketing Produced for Fairfield Estates

