



Connells

Carlisle Road
Cannock



Ground Floor

Entrance Porch

Having a double glazed front entrance door, double glazed windows to the front and side aspects, ceiling light point, tiled flooring and door to hallway

Hallway

Having a double glazed entrance door, radiator, spotlights, carpeted flooring, stairs to first floor and doors to kitchen, lounge and inner hallway

Kitchen

Being a fitted kitchen with a range of wall, base and drawer units with laminate work surfaces over and having a one and a half bowl sink/drain, electric oven with cooker-hood over, radiator, part tiled walls, spotlights, tiled flooring and a double glazed window to the front aspect

Lounge/ Diner

Being a through lounge/diner and having double glazed French doors to the rear garden, gas fireplace, two radiators, two ceiling light points and carpeted flooring

Inner Hallway

Having a ceiling light point, storage cupboard and doors to utility and veranda

Utility

Having a double glazed window to the rear aspect, laminate work surfaces, plumbing, space for appliances, wash hand basin, WC, boiler. part tiled walls, ceiling light point and tiled flooring

Veranda

Having double glazed doors to the front and rear aspects, two ceiling light points and tiled flooring

First Floor

Landing

Having a double glazed window to the side aspect, ceiling light point, loft access and doors to bedrooms and shower room

Bedroom 1

Having a double glazed window to the rear aspect, radiator, spotlights and carpeted flooring

Bedroom 2

Having a double glazed window to the front aspect, radiator, ceiling light point and carpeted flooring

Bedroom 3

Having a double glazed window to the front aspect, storage cupboard, radiator, ceiling light point and carpeted flooring

Shower Room

Having a double glazed window to the rear aspect, WC, vanity wash hand basin, shower cubicle, towel rail radiator, spotlights, fully tiled walls and tiled flooring

Outside

Front

Having a paved driveway, laid to lawn and side access to the rear via veranda

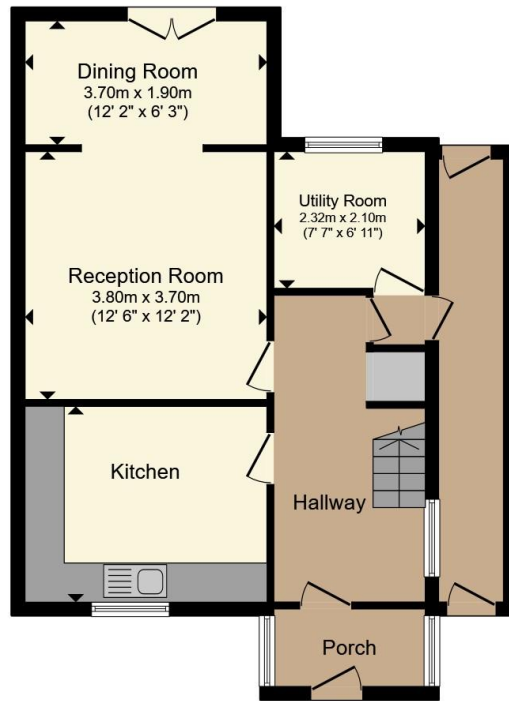
Rear

Having a paved patio area

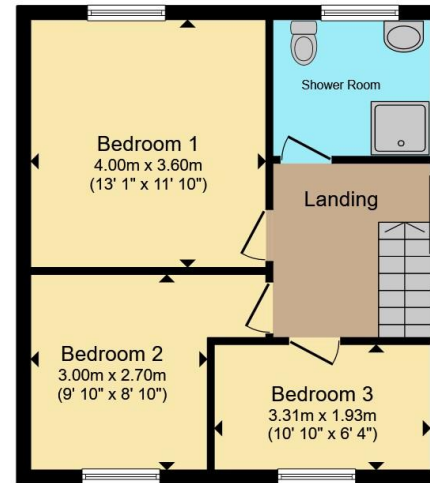








Ground Floor



First Floor

Total floor area 103.0 m² (1,108 sq.ft.) approx

This floor plan is for illustrative purposes only. It is not drawn to scale. Any measurements, floor areas (including any total floor area), openings and orientation are approximate. No details are guaranteed, they cannot be relied upon for any purpose and they do not form part of any agreement. No liability is taken for any error, omission or misstatement. A party must rely upon its own inspection(s). Powered by www.propertybox.io



To view this property please contact Connells on

T 01543 500923
E cannock@connells.co.uk

10-12 Wolverhampton Road
CANNOCK WS11 1AH

EPC Rating: C Council Tax
Band: B

Tenure: Freehold

view this property online connells.co.uk/Property/CNK108903



1. MONEY LAUNDERING REGULATIONS Intending purchasers will be asked to produce identification documentation at a later stage and we would ask for your co-operation in order that there will be no delay in agreeing the sale. 2. These particulars do not constitute part or all of an offer or contract. 3. The measurements indicated are supplied for guidance only and as such must be considered incorrect. Potential buyers are advised to recheck measurements before committing to any expense. 4. We have not tested any apparatus, equipment, fixtures, fittings or services and it is in the buyers interest to check the working condition of any appliances.

Connells Residential is registered in England and Wales under company number 1489613, Registered Office is Cumbria House, 16-20 Hockliffe Street, Leighton Buzzard, Bedfordshire, LU7 1GN. VAT Registration Number is 500 2481 05.

See all our properties at www.connells.co.uk | www.rightmove.co.uk | www.zoopla.co.uk

Property Ref: CNK108903 - 0001