



Price
£400,000

Freehold

3x  2x  1x 

**Sterling Road,
Sittingbourne, Kent,
ME10**

Wards
Helping you move forwards



Main features

- Semi-detached chalet bungalow
- Garage and off-road parking
- Situated in the sought-after area of South Sittingbourne
- Close to schools shops and amenities
- Chain free

Accommodation

GROUND FLOOR

- Entrance Hall
- Shower Room
- Kitchen/Breakfast Room: 11'8 x 10'2 (3.56m x 3.10m)
- Dining Area: 14'2 x 10'7 (4.32m x 3.23m)
- Lounge: 16'3 x 11'1 (4.96m x 3.38m)
- Bedroom 3: 9'8 x 8'8 (2.95m x 2.64m)

FIRST FLOOR

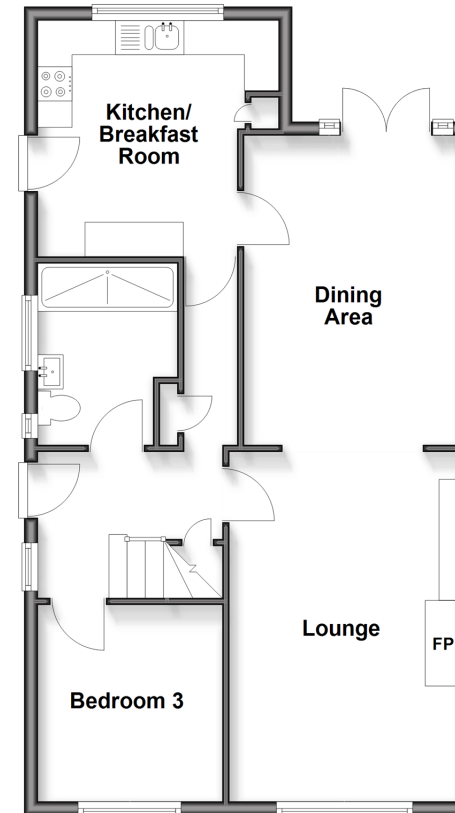
- Landing
- Bedroom 1: 11'1 x 9'7 (3.38m x 2.92m)
- Shower Room
- Bedroom 2: 12'3 x 11'2 (3.74m x 3.41m)

OUTSIDE

- Front Garden
- Off-Road Parking & Garage
- Rear Garden

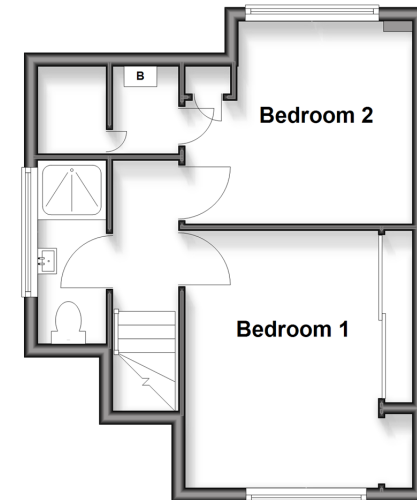
Ground Floor

Approx. 65.9 sq. metres (709.0 sq. feet)



First Floor

Approx. 32.0 sq. metres (344.0 sq. feet)



Call Sittingbourne - 01795 427272 ■ wardsof Kent.co.uk

- Legal advice should be taken to verify fixtures/fittings, planning, alterations and/or lease details
- Appliances & services are untested, dimensions are approximate and floor plans are not to scale



11737743/20251017/CK/MC1