

57 Hartington Street, Moss Side, Manchester, M14 4RP

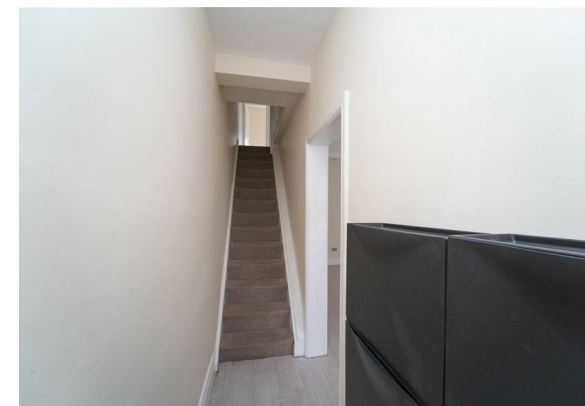


**JP & Brimelow**  
ESTATE AGENTS

# Offers In The Region Of £230,000




\*\*\*VIDEO TOUR AVAILBALE\*\*\* A spacious and well-kept, THREE BEDROOM, mid-terrace property. Positioned in the heart of Moss side, off Great Western Street. Situated a short drive from Manchester city centre, with good transport links on Princess parkway, close to Alexandra Park with a selection of sports activities, shops and a supermarket off Lloyd Street South and Claremont Primary School nearby. This well-planned, period property consists of; an entrance hall, a good-sized lounge/dining room, a useful under stairs storage cupboard, a modern fully fitted kitchen which allow access out into the rear courtyard style garden, a downstairs W.C completed this floor. Stairs leading to the first-floor landing reveals two useful storage cupboards, three good sized bedrooms, and a white tree piece bathroom suite completing this delightful property. Other benefits include gas fired central heating, high ceilings, and a rear enclosed courtyard. OFFERED WITH NO VENDOR CHAIN.





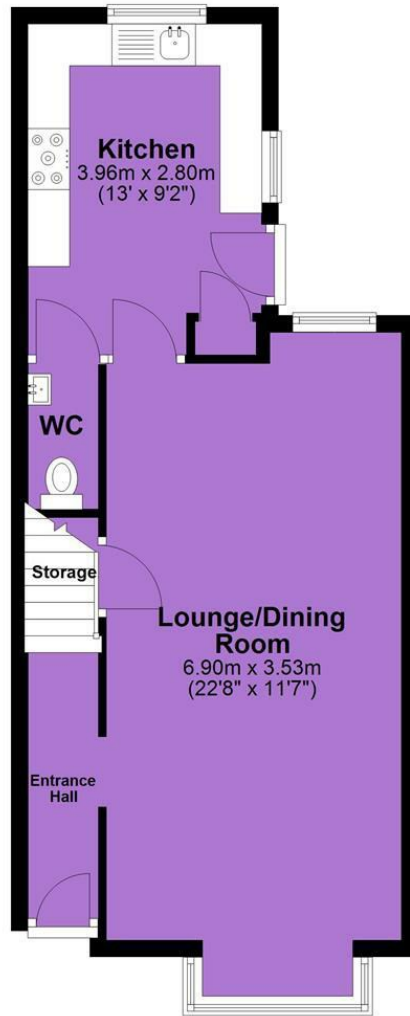
## EPC Chart

Energy Efficiency Rating		
	Current	Potential
<i>Very energy efficient - lower running costs</i>		
(92 plus) <b>A</b>		
(81-91) <b>B</b>		
(69-80) <b>C</b>		
(55-68) <b>D</b>		
(39-54) <b>E</b>		
(21-38) <b>F</b>		
(1-20) <b>G</b>		
<i>Not energy efficient - higher running costs</i>		
<b>England &amp; Wales</b>	EU Directive 2002/91/EC 	



Tenure: **Freehold** Council Tax Band: **A**

## Ground Floor



## First Floor



JP & Brimelow Estate Agents Ltd  
430 Barlow Moor Road, Manchester, M21 8AD  
Tel: 0161 8822233  
E: sales@jpbrimelow.co.uk www.jpandbrimelow.co.uk



**JP & Brimelow**  
ESTATE AGENTS

NOTICE: JP & Brimelow Estate Agents Ltd for themselves and for the vendors or lessors of this property whose agents they give notice that:

- (i) the particulars are set out as a general outline only for the guidance of intending purchasers or lessees, and do not constitute, nor constitute part of, an offer or contract;
- (ii) all descriptions, dimensions, references to the condition and necessary permissions for use and occupation, and other details are given in good faith and are believed to be correct but any intending purchasers or tenants should not rely on them as statements or representations of fact but must satisfy themselves by inspection or otherwise as to the correctness of each of them;
- (iii) no person in the employment of JP & Brimelow Estate Agents Ltd has any authority to make or give any representation or warranty whatever in relation to this property.

jpandbrimelowstateagents

@jpandbrimelow