



17 Huntingdon Close  
Corby, NN18 8RG



**Simpson West**

Situated in a highly desirable position within the ever-popular Oakley Vale development, this rarely available and exceptionally spacious detached family home is presented in excellent condition throughout and offers versatile accommodation ideal for modern family living.

The property is entered via a bright and welcoming reception hall, leading to a thoughtfully arranged ground floor comprising a cloakroom/WC, generous bay-fronted living room, separate dining room, and study ideal for home working. The impressive, refitted kitchen/breakfast room features a range of integrated appliances and is further complemented by a separate utility room.

To the first floor are four well-proportioned bedrooms all benefitting from fitted wardrobes, including a superb principal bedroom with en-suite shower facilities, alongside a stylish family bathroom.

Externally, the property enjoys an attractive and low-maintenance frontage with mature planting, while a double-width driveway provides ample off-road parking and access to the DOUBLE GARAGE. The beautifully maintained rear garden offers an excellent degree of privacy and features a substantial patio seating area leading onto a generous lawn, all framed by established shrub and flower borders.

Early viewing is highly recommended to fully appreciate the space, position, and quality of accommodation on offer.

Energy Rating to be confirmed.

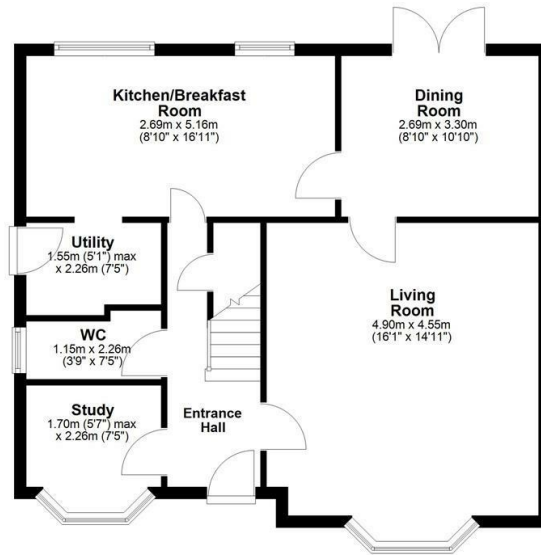


£415,000

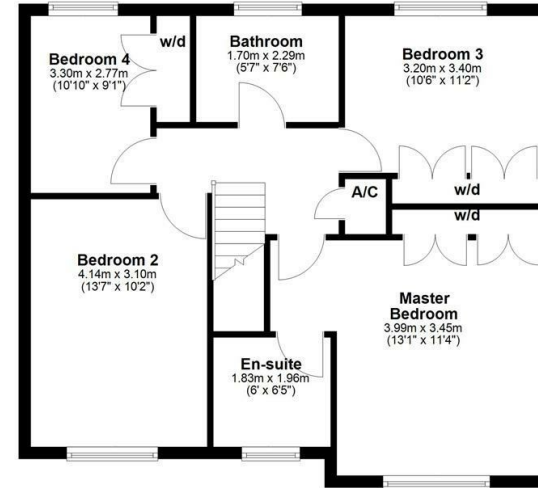
4 2 3



### Ground Floor



### First Floor



### Energy Efficiency Rating

	Current	Potential
<i>Very energy efficient - lower running costs</i>		
(92 plus) <b>A</b>		
(81-91) <b>B</b>		
(69-80) <b>C</b>		
(55-68) <b>D</b>		
(39-54) <b>E</b>		
(21-38) <b>F</b>		
(1-20) <b>G</b>		
<i>Not energy efficient - higher running costs</i>		
<b>England &amp; Wales</b>	EU Directive 2002/91/EC	



When you buy with Simpson West, you know **you'll be in safe hands**. From the moment you walk through our doors, we'll make you **feel truly welcome**. Our sales consultants and financial advisors will take you through **every step of the process**, offering **free expert advice** along the way, from help choosing the right mortgage and insurance through to finding your conveyancer. And if you need help selling your home too, **with over 20 years of local experience, you can trust us to get you moving**.



**Simpson  
West**

Making Every  
Journey Personal



01536 202007

[info@simpsonwest.co.uk](mailto:info@simpsonwest.co.uk)

<https://www.simpsonwest.co.uk/>

64 Corporation Street, Corby, Northants, NN17 1NH