



Berrylands Road, KT5

£2,550 Per calendar month

This first floor apartment has a modern finish throughout and includes three bedrooms, a balcony, an external storage shed and off street parking.

Meadowbank is a peaceful cul-de-sac, approximately half a mile away from Surbiton town centre, where you will find the mainline train station and a vast selection of gastro pubs, excellent restaurants and local shops.

Features

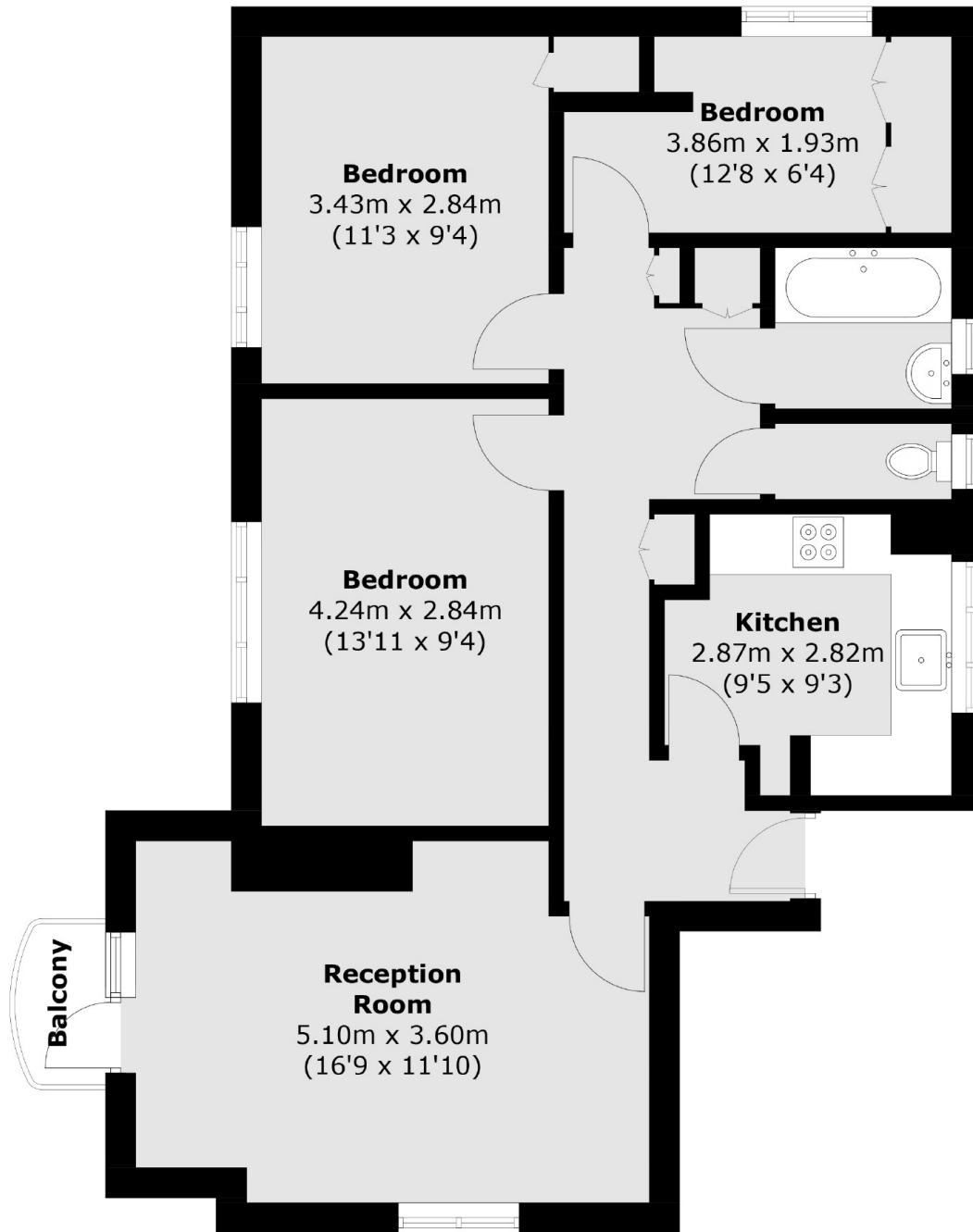
- First Floor
- Three Bedrooms
- Private Balcony
- Ample Storage
- Off-Street Parking
- Modern Finish Throughout



Berrylands Road, KT5



Berrylands Road,
Surbiton, KT5



Total area (approx.): 73.1 sq. m (786.8 sq. ft)
Balcony (approx.): 1.3 sq. m (14.0 sq. ft)