



Ditton Lawn, KT7

£359,950

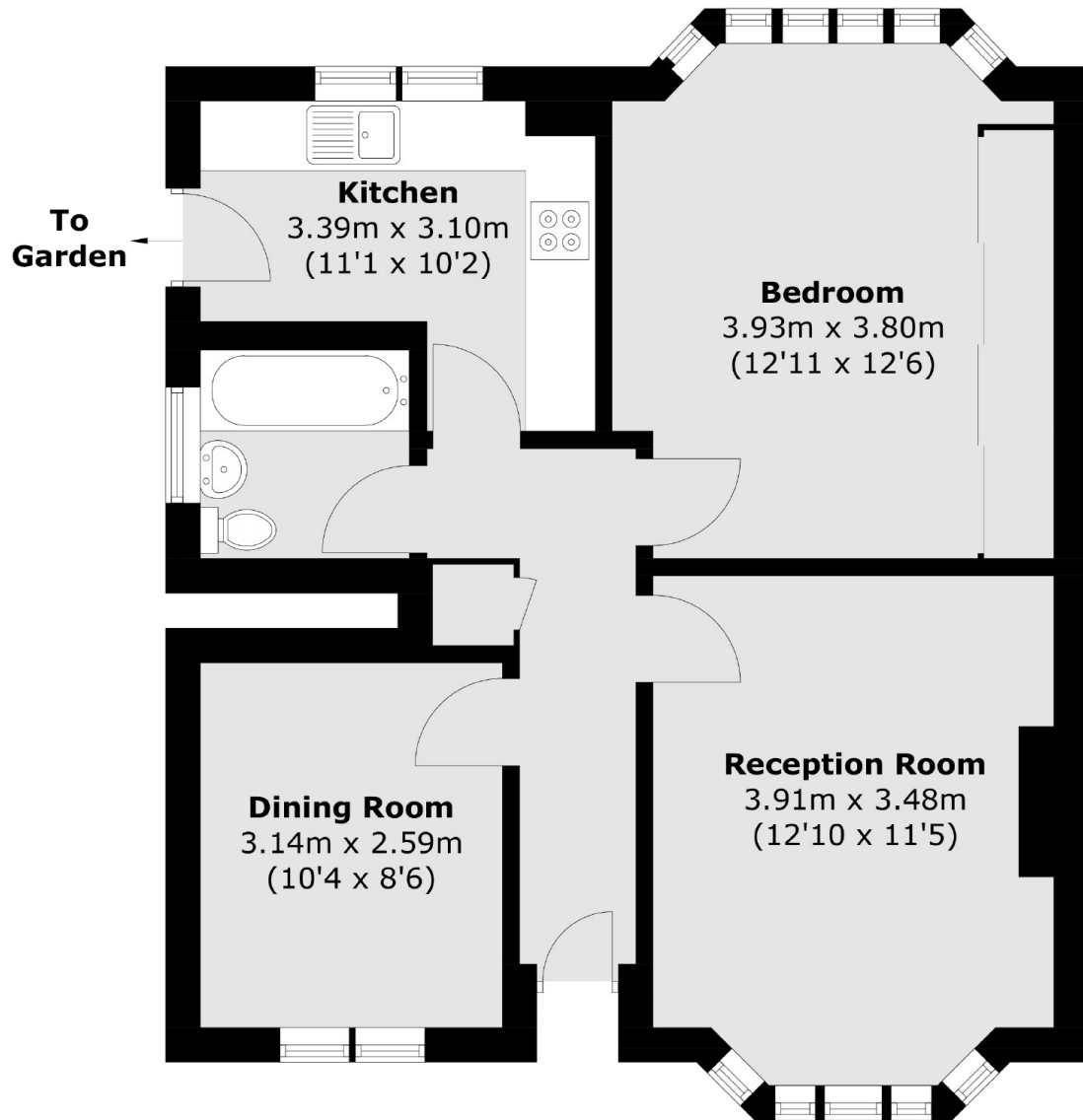
This spacious ground floor maisonette is ideally situated in a quiet cul-de-sac, overlooking the cricket pitch at Giggs Hill Green. The property features two generous double bedrooms, a well-appointed bathroom, a kitchen with direct access to the beautiful communal gardens, and a large reception room. The property also benefits from a new lease of 999 years on completion.

Ditton Lawn is approximately half a mile away from Thames Ditton train station and just over a mile from Surbiton High Street and the fast train to Waterloo.

Features

- Two Bedrooms
- No Onward Chain
- On Street Parking
- Communal gardens
- Desirable Location
- New Lease

Ditton Lawn, Thames Ditton, KT7



Ground Floor

Total area (approx.): 58.7 sq. m (631.8 sq. ft)