



Holland Gardens, TW8

£695,000

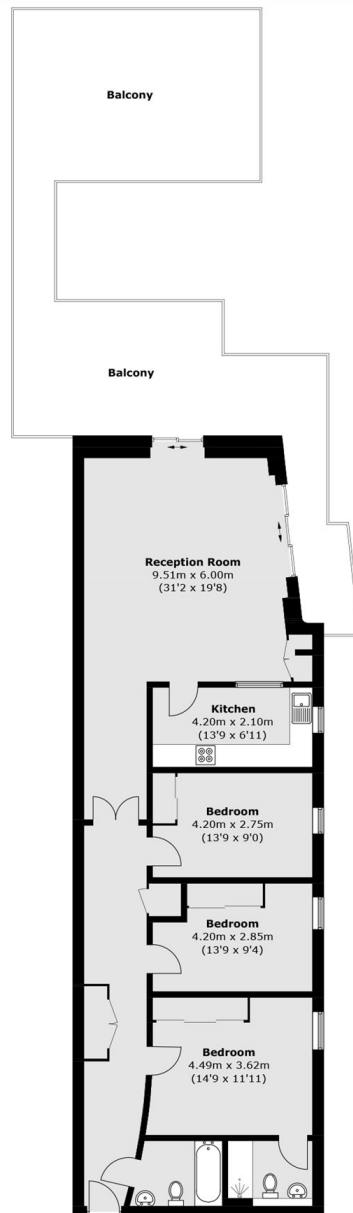
A well-presented three double bedroom, two bathroom penthouse apartment with an impressive south-facing terrace enjoying views across the River Thames. Further benefits include two secure underground parking spaces 24-hour concierge, residents gym/sauna and no onward chain.

Holland Gardens is a gated development conveniently located close to Kew Bridge and Brentford stations, with regular services to London Waterloo. Brentford High Street offers a variety of amenities, while the nearby A4/M4 provides excellent access into and out of London.

Features

- Penthouse
- Three Double Bedrooms
- Two Bathrooms
- Huge South-Facing Terrace
- River View
- Two Parking Spaces

Holland Gardens, Brentford, TW8



Total area (approx.): 116.4 sq. m (1,252.9 sq. ft)
Balcony: 64.1 sq. m (690.0 sq. ft)