



## Mallard Close, W7

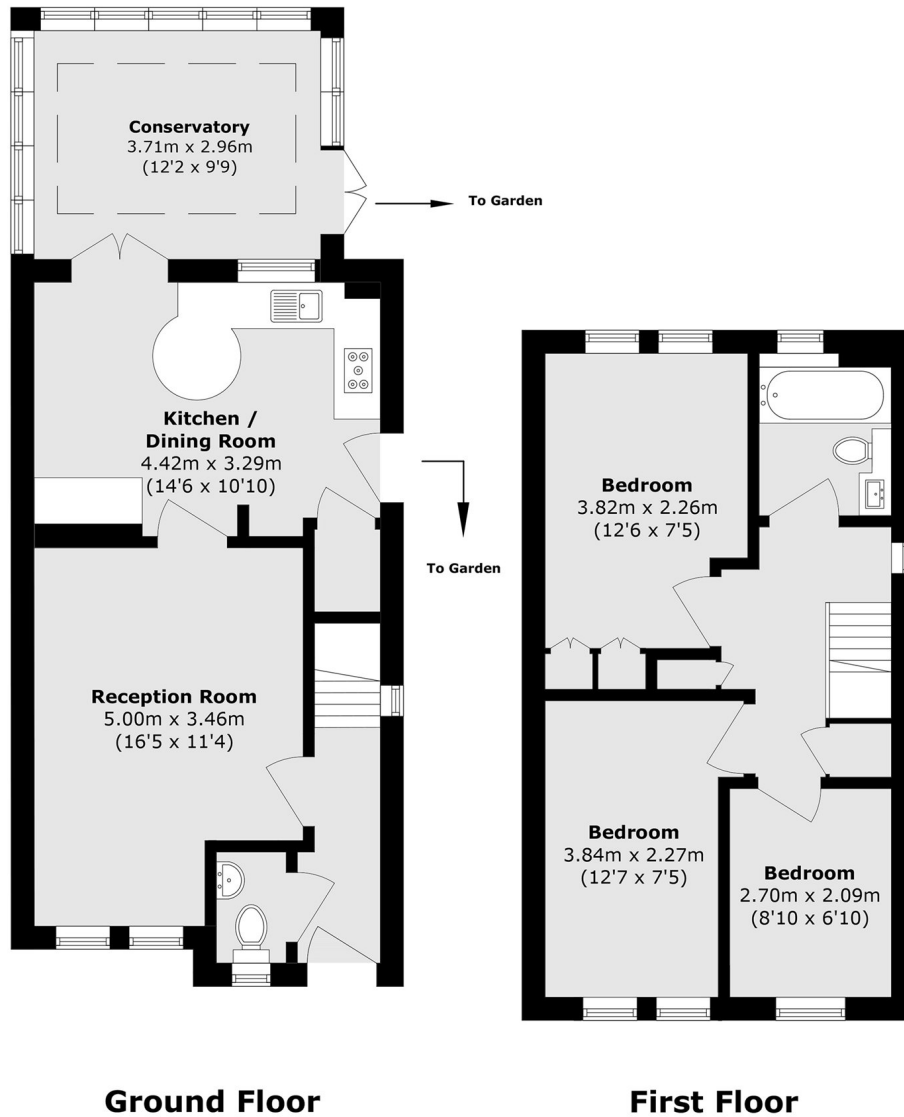
£650,000

This well presented three bedroom semi-detached home on a private road in a quiet cul-de-sac, just moments from the serene Grand Union Canal. Recently refurbished to a high standard, the property offers comfortable and modern living space.

The home further benefits from a bright conservatory, a separate downstairs WC, driveway parking for two cars and convenient side access leading to the rear of the house.

Ideally located for both Hanwell station (Elizabeth line) and Boston Manor (Piccadilly line) stations as well as the varied and frequent bus routes on Boston Road. Well regarded school catchments include St Marks Primary and Elthorne Park High School.

- Recently Refurbished • Off-Street Parking • Hanwell Station



Total area (approx.): 87.8 sq. m (945.1 sq. ft)

Robertson Smith & Kempson Hanwell Sales  
69 Greenford Avenue,  
London, W7 1LL  
020 8566 2339  
[hanwellsales@robertsonsmithandkempson.co.uk](mailto:hanwellsales@robertsonsmithandkempson.co.uk)

Energy Rating: C. We aim to make our particulars both accurate and reliable. However they are not guaranteed; nor do they form part of an offer or contract. If you require clarification on any points then please contact us, especially if you're traveling some distance to view. Please note that appliances and heating systems have not been tested and therefore no warranties can be given as to their good working order.