



21 Hollin Hall Drive, Longridge, Preston, PR3 3UF
£215,000

PROPERTY
PERSPECTIVE

GROUND FLOOR

Lounge 13'11" x 12'1" (4.24m x 3.68m)

Carpet flooring with window to the front

Diner kitchen 15'2" x 9'5" (4.62m x 2.87m)

High quality wood effect laminate flooring with patio doors leading to the rear garden. A range of fitted kitchen units, worktops and integrated kitchen appliances, including oven, hob and hood

WC/cloaks

High quality wood effect laminate flooring with 2 piece bathroom suite in white

FIRST FLOOR

Bedroom 11'1" x 10'3" (3.39m x 3.13m)

Carpet flooring with window to the front elevation

En-suite

Vinyl flooring with 2 piece bathroom suite in white and separate showering enclosure

Bedroom 11'10" x 6'7" (3.61m x 2.01m)

Carpet flooring with window to the rear elevation

Bedroom 10'8" x 8'7" (3.25m x 2.62m)

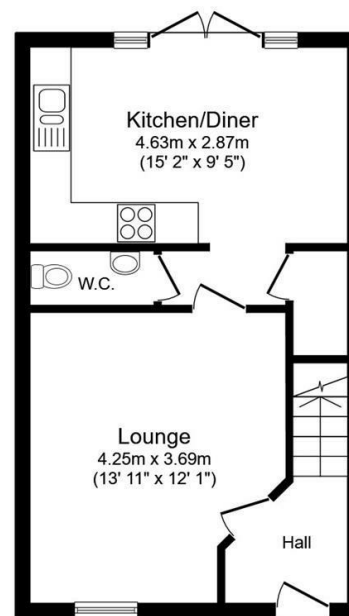
Carpet flooring with window to the front elevation

Bathroom

Vinyl flooring with 3 piece bathroom suite in white, shower over bath with glass splash-back screen and radiator

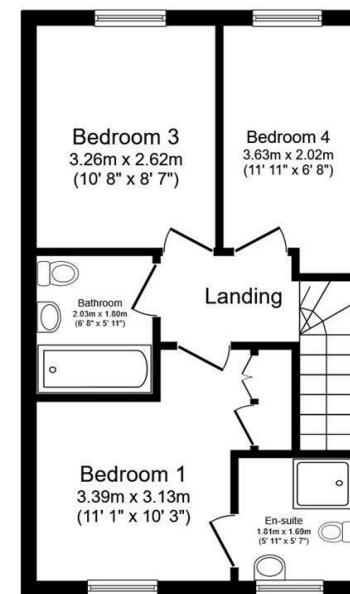
EXTERNAL

Well presented rear garden, enclosed by panel fencing with laid to lawn and patio area. Large double driveway to the side of the property, parking for 2 vehicles.



Ground Floor

Floor area 37.6 sq.m. (405 sq.ft.)



First Floor

Floor area 37.6 sq.m. (405 sq.ft.)

Total floor area: 75.2 sq.m. (809 sq.ft.)

This floor plan is for illustrative purposes only. It is not drawn to scale. Any measurements, floor areas (including any total floor area), openings and orientations are approximate. No details are guaranteed, they cannot be relied upon for any purpose and do not form any part of any agreement. No liability is taken for any error, omission or misstatement. A party must rely upon its own inspection(s). Powered by www.Propertybox.io