



The Barn, 7 Crown Street, Eastbourne, BN21 1NX

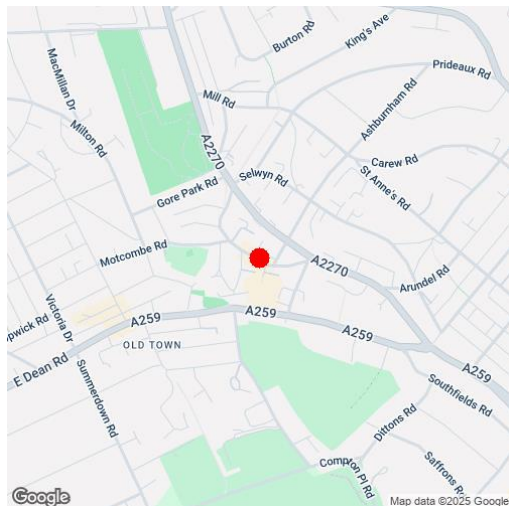
Price £635,000 | Freehold

LS **Leaper
Stanbrook**

TOWN CENTRE OFFICE
01323 416716

MEADS STREET OFFICE
01323 737962

A very rare opportunity to acquire a charming barn conversion of exceptional character set back from the road and enjoying considerable privacy in the heart of Motcombe village. The Barn is believed to date from the Victorian era and has been converted to provide a unique home providing generously proportioned accommodation over two floors, with the bedrooms on the ground floor and living space on the first. The delightful living room measures an impressive 25' x 18' has a vaulted ceiling, dual aspect windows and additional velux-style roof lights. The current owners have made numerous improvements and adaptations over the last three years including re-fitting the kitchen/breakfast room with high quality wall and base cabinets beneath granite work surfaces, with an integrated dishwasher and wine cooler and space for a Range-style cooker and American fridge/freezer. The master bedroom has a luxuriously appointed en-suite shower room with walk-in shower cubicle and a second shower room has also been re-fitted to an equally high standard. Solar panels have also been added. Two of the three bedrooms have fitted wardrobes and other benefits include gas underfloor heating throughout. The Barn is approached via security gates leading to an area of off-road parking for up to two vehicles and the courtyard garden beyond. The gardens have been arranged for ease of maintenance with original cobbled area with raised flower beds and shrubs with a sun room integral to the house. There is a small ornamental pond together with a slate water feature adding to the sense of serenity. The Barn enjoys a particularly convenient location in the catchment for Gildredge House school, with local shops including a post office, a Waitrose store, the famous Lamb Inn and Gildredge Park in the immediate vicinity.





At a Glance:

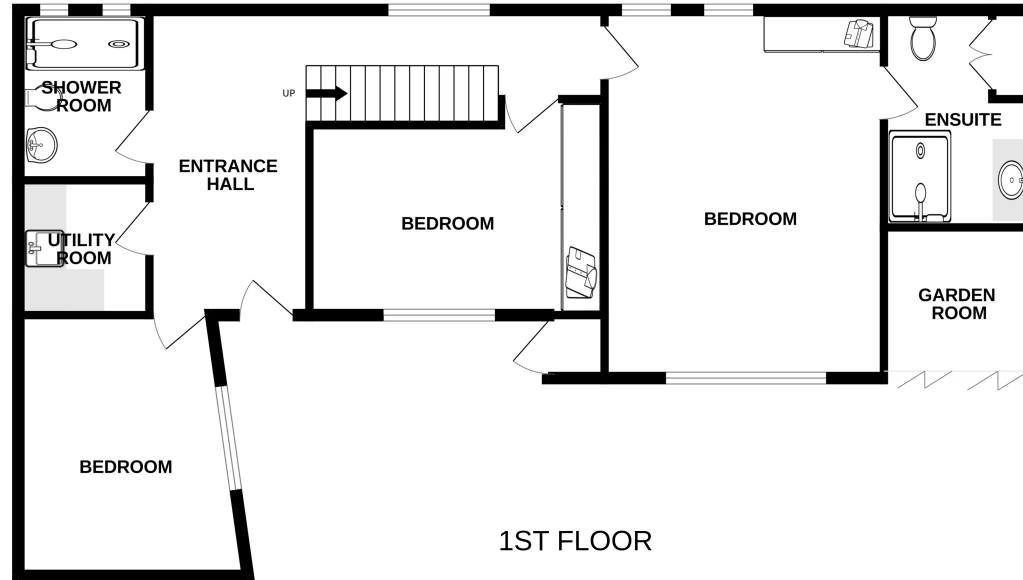
- Charming barn conversion
- Secluded position behind security gates in Motcombe village
- Superb 25' x 18' living room with vaulted ceiling
- Recently re-fitted kitchen/breakfast room and separate utility room
- Two recently re-fitted shower rooms (one en-suite to principal bedroom)
- Three bedrooms (two with fitted wardrobes)
- Delightful courtyard garden

Accommodation:

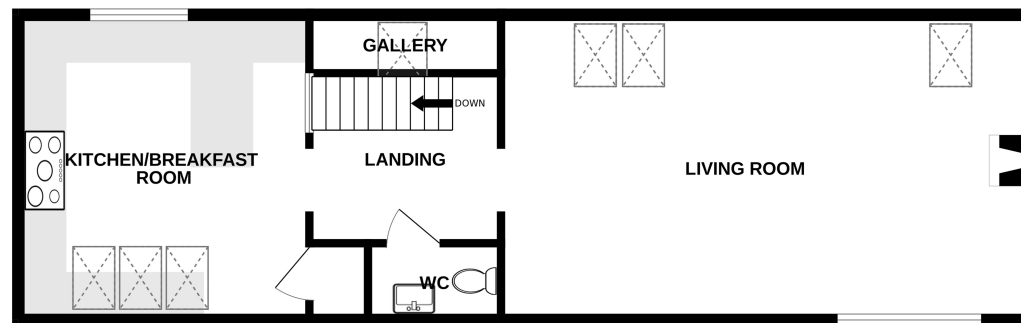
- HALL**
- PRINCIPAL BEDROOM**
17'6" (5.33m) x 13'3" (4.04m)
- EN-SUITE SHOWER ROOM**
- BEDROOM 2**
13'10" (4.22m) x 10'0" (3.05m)
- BEDROOM 3**
12'3" (3.73m) x 10'6" (3.2m) reducing slightly
- SHOWER ROOM/WC**
- UTILITY ROOM**
- FIRST FLOOR LANDING**
- LIVING ROOM**
25'0" (7.62m) x 18'4" (5.59m)
- KITCEHN/BREAKFAST ROOM**
14'5" (4.39m) x 14'3" (4.34m)
- CLOAKROOM/WC**
- OUTSIDE**
- COURTYARD GARDEN**
To the front of the propretly
- OFF-ROAD PARKING**
- EPC**
Band "C"
- COUNCIL TAX**
Band "E"



GROUND FLOOR



1ST FLOOR



Whilst every attempt has been made to ensure the accuracy of the floorplan contained here, measurements of doors, windows, rooms and any other items are approximate and no responsibility is taken for any error, omission or mis-statement. This plan is for illustrative purposes only and should be used as such by any prospective purchaser. The services, systems and appliances shown have not been tested and no guarantee as to their operability or efficiency can be given.

Made with Metropix ©2025

Ref: 1

Whilst every care has been taken in the preparation of these particulars, neither the agents nor the vendor accept any responsibility for error or omission, nor do they constitute an offer or contract. Please note we have not tested any apparatus, fixtures, fittings, or services. Interested parties must undertake their own investigation into the working order of these items. All measurements are approximate whilst photographs and floorplans are provided for guidance only.

LS Leaper
Stanbrook

5 Gildredge Road, Eastbourne BN21 4RB
01323 416716

28 Meads Street, Eastbourne BN20 7QY
01323 737962

website
www.leaperstanbrook.co.uk

email
sales@leaperstanbrook.co.uk