



Connells

Mary Road
Tividale Oldbury



Property Description

Situated in a popular residential area of Tividale, this traditional property on Mary Road presents an excellent opportunity for buyers looking to modernise and add value. Offered to the market with no upward chain, the home is ideal for first-time buyers, investors, or families seeking a project in a well-connected location.

In need of renovation throughout, the property offers generous potential to create a superb family home tailored to your own tastes and requirements. The existing layout provides well-proportioned living accommodation, with scope for reconfiguration or extension (subject to the necessary planning permissions).

The property further benefits from a good-sized rear garden.

Perfectly positioned for families, the home falls within the catchment of excellent local schools and enjoys convenient access to nearby amenities, transport links, and road networks, making commuting straightforward.

Early viewing is highly recommended to appreciate the potential on offer.

Entrance Hall

Door to the front and wall mounted radiator.

Lounge

14' 11" x 12' 7" max (4.55m x 3.84m max)
Front facing window and wall mounted radiator.

Dining Room

11' 1" max x 9' 5" max (3.38m max x 2.87m max)
double glazed patio doors to rear and wall mounted radiator.

Kitchen

9' 7" x 7' 4" max (2.92m x 2.24m max)
Wall and base units, sink/drainer integrated into work surface, gas hob, electric oven with cooker hood over. Rear facing window and door to side.

Landing

Loft access, side facing window and doors leading to various rooms.

Bedroom One

12' 11" x 11' 2" plus recess (3.94m x 3.40m plus recess)
Front facing double glazed window and radiator.

Bedroom Two

12' 2" max x 10' 9" (3.71m max x 3.28m)

Rear facing double glazed window and wall mounted radiator.

Bedroom Three

9' 11" x 7' 6" max (3.02m x 2.29m max)

Front facing window and wall mounted radiator.

Bathroom

Bath with shower over, wash hand basin, low level WC and rear facing window.

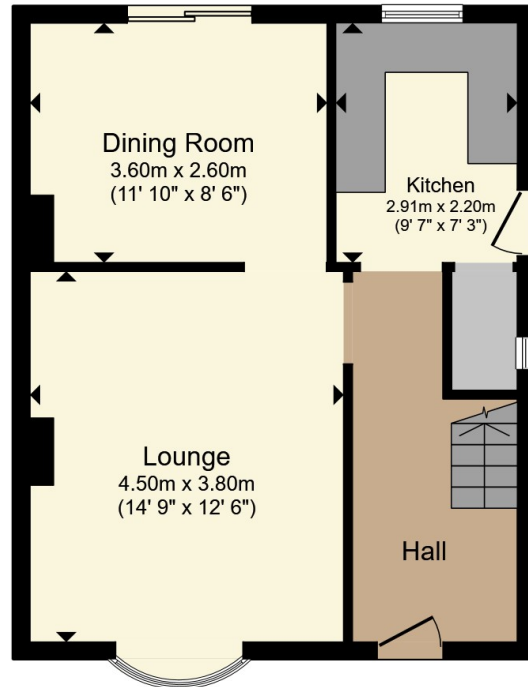
Rear Gaden

Patio area with a further lawn area and fence boundaries.

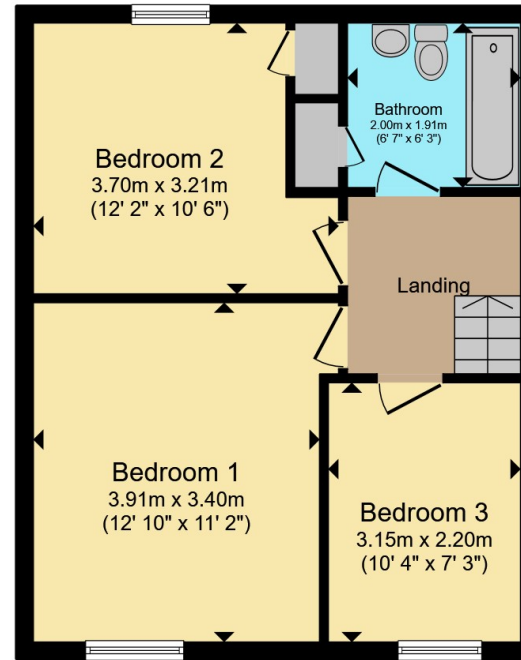








Ground Floor



First Floor

Total floor area 89.2 m² (960 sq.ft.) approx

This floor plan is for illustrative purposes only. It is not drawn to scale. Any measurements, floor areas (including any total floor area), openings and orientation are approximate. No details are guaranteed, they cannot be relied upon for any purpose and they do not form part of any agreement. No liability is taken for any error, omission or misstatement. A party must rely upon its own inspection(s). Powered by www.propertybox.io



To view this property please contact Connells on

T 0121 552 2671
E oldbury@connells.co.uk

70-76 Birmingham Street
OLDBURY B69 4EB

EPC Rating: C Council Tax Band: B

Tenure: Freehold

view this property online connells.co.uk/Property/OLD313007



1. MONEY LAUNDERING REGULATIONS Intending purchasers will be asked to produce identification documentation at a later stage and we would ask for your co-operation in order that there will be no delay in agreeing the sale. 2. These particulars do not constitute part or all of an offer or contract. 3. The measurements indicated are supplied for guidance only and as such must be considered incorrect. Potential buyers are advised to recheck measurements before committing to any expense. 4. We have not tested any apparatus, equipment, fixtures, fittings or services and it is in the buyers interest to check the working condition of any appliances.

Connells Residential is registered in England and Wales under company number 1489613, Registered Office is Cumbria House, 16-20 Hockliffe Street, Leighton Buzzard, Bedfordshire, LU7 1GN. VAT Registration Number is 500 2481 05.

See all our properties at www.connells.co.uk | www.rightmove.co.uk | www.zoopla.co.uk

Property Ref: OLD313007 - 0009