



Websters  
estate agents

# The Embankment, Twickenham, TW1 3DU

Grade II Listed Georgian Cottage dating back to before 1710 in the oldest part of Twickenham by the River Thames, Eel Pie Island and overlooking St Mary's Parish Church. Enclosed at the side and rear by an attractive boundary wall with footpath access into the front garden and from a gate at the rear. Situated just 0.4 miles from Twickenham train station, St Mary's Primary and Orleans Park Schools.

Beautifully presented throughout with modern fixtures and fittings but retaining many original features such as exposed beams, doors, staircases, built in cupboards/storage and fireplaces. This charming home offers 1121 sq ft of adaptable living space over 3 floors with 4 bedrooms (including the basement room and the separate brick built annexe/guest suite).

The front door opens into the living room with beams, panelling and a wood burning stove. Stairs lead down to the study/bedroom 3 and steps at the rear lead up to the kitchen/dining room. This stunning room has bespoke fitted units with integrated appliances and space for dining. A stable door opens to the side of the house with access to the paved rear garden, side of the property and the front courtyard with the brick built self contained annexe. With a kitchen, wet room and living area this offers potential use as a bedroom/guest room, home office or for a lodger/tenant.

On the first floor is a double bedroom and the family bathroom with stairs up to a double bedroom with built in and loft storage.

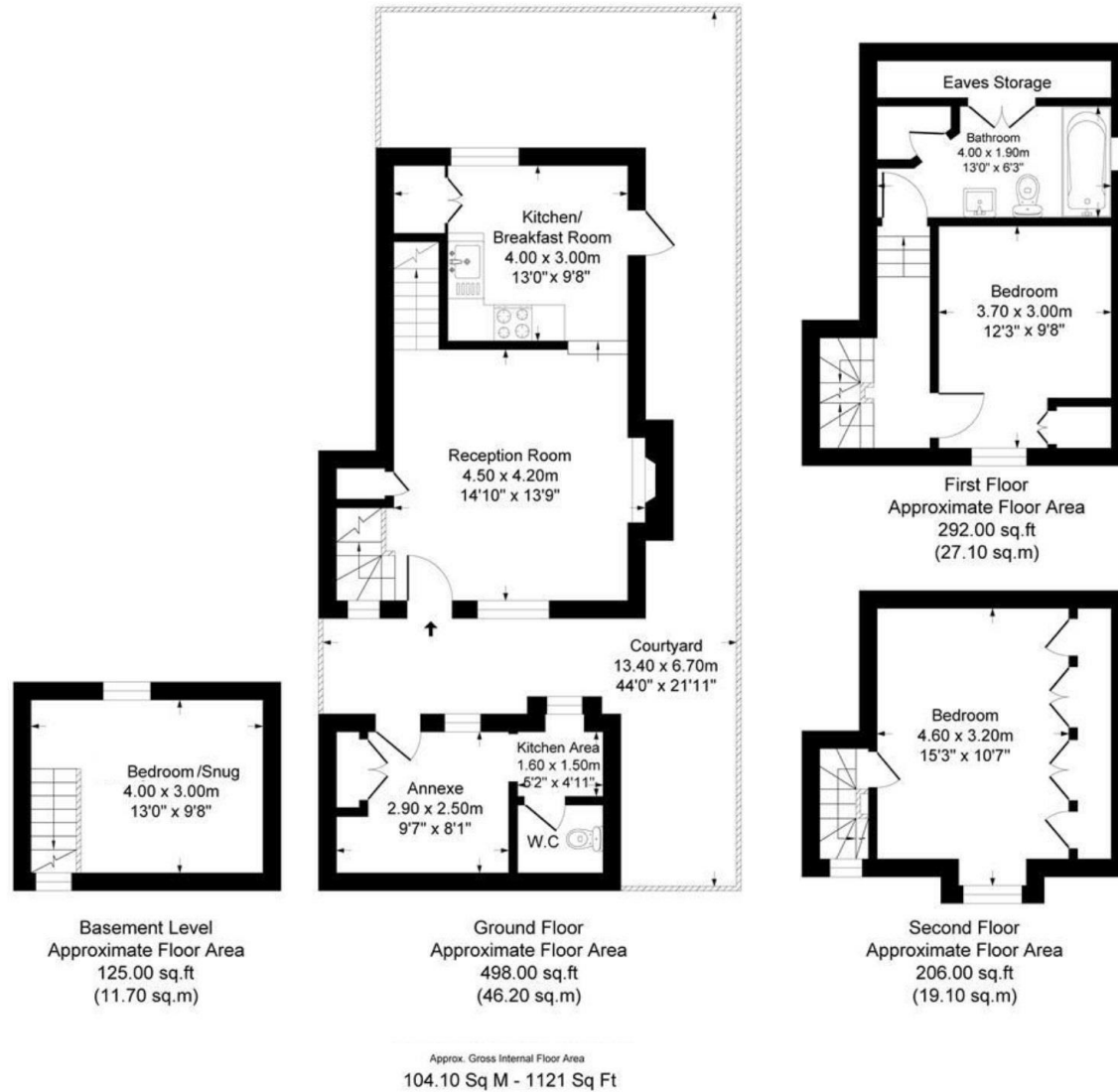
Located next to Church Street shops, cafes and restaurants and 0.3 miles from Orleans Gardens and the riverside walking/cycle track along the Thames to Richmond.

EPC Rating E

- Grade II Listed Georgian House
- Stunning Twickenham Thames Riverside Location
- Modernised but Retaining Period Features
- 4 Bedrooms Including Basement and Annexe
- Enclosed Courtyard Gardens at Front and Rear
- Close to Numerous Popular Schools
- Within 0.4 Miles of Twickenham Station



## The Embankment TW1



a Websters Estate Agents 36 Broad Street, Teddington, Middlesex TW11 8QY

t 020 8614 6000

e sales@mywebsters.co.uk w mywebsters.co.uk

### Disclaimer

These particulars, whilst believed to be accurate are set out as a general outline only for guidance and do not constitute any part of an offer or contract. Intending purchasers should not rely on them as statements of representation of fact, but must satisfy themselves by inspection or otherwise as to their accuracy. We have not carried out a detailed survey nor tested the services, appliances and specific fittings. Room sizes should not be relied upon for carpets and furnishings. The measurements given are approximate. No person in this firm's employment has the authority to make or give any representation or warranty in respect of the property.

