



Aubyn Square, SW15
£750,000

Dexters



Aubyn Square, SW15

A well-presented and spacious family home arranged over three floors, offering flexible accommodation of approximately 1,392 sq ft.

The ground floor comprises a bright front reception room with feature fireplace and bay window, a separate kitchen/breakfast room with ample storage and worktop space, and a dining area opening directly onto a private rear garden ideal for entertaining.

Upstairs, the first floor provides three well-proportioned bedrooms and a family bathroom, while the top floor hosts a generous principal bedroom suite with additional eaves storage and its own bathroom, creating an excellent private retreat.

Further benefits include off-street parking to the front and a practical layout suited to both family living and working from home.

Located in the heart of Putney, Aubyn Square is well positioned for the shops, cafés and amenities of the High Street, along with nearby green open spaces. Excellent transport links are available from Putney railway station, providing swift access to Waterloo, and East Putney Underground Station (District Line), ensuring convenient connections into Central London and beyond.

Features

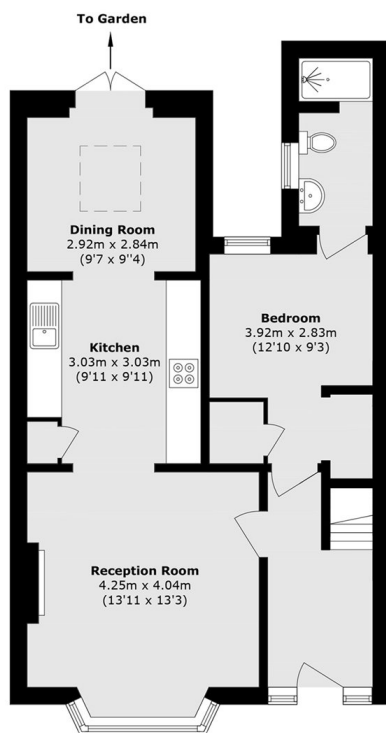
- 1,392 sq. ft
- Off-street Parking
- Private Garden
- Four Bedrooms
- Three Bathrooms
- Chain Free



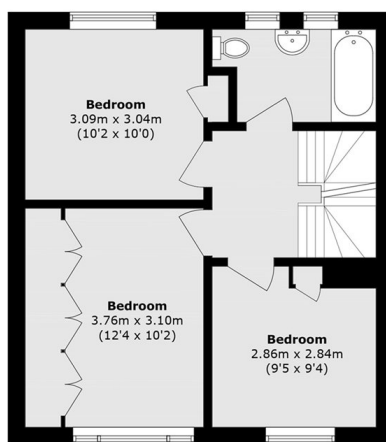




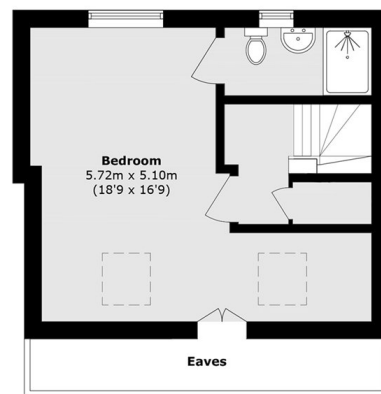
Aubyn Square, London, SW15



Ground Floor



First Floor



Second Floor

Total area (approx.): 129.4 sq. m (1392.8 sq. ft)