

JAMES EDWARD

Comprehensively Cared For

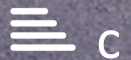


KINGSLEY
COURT

Palmerston Road

Bowes Park, London, N22 8RQ

Offers In Excess Of £350,000



Palmerston Road



Description

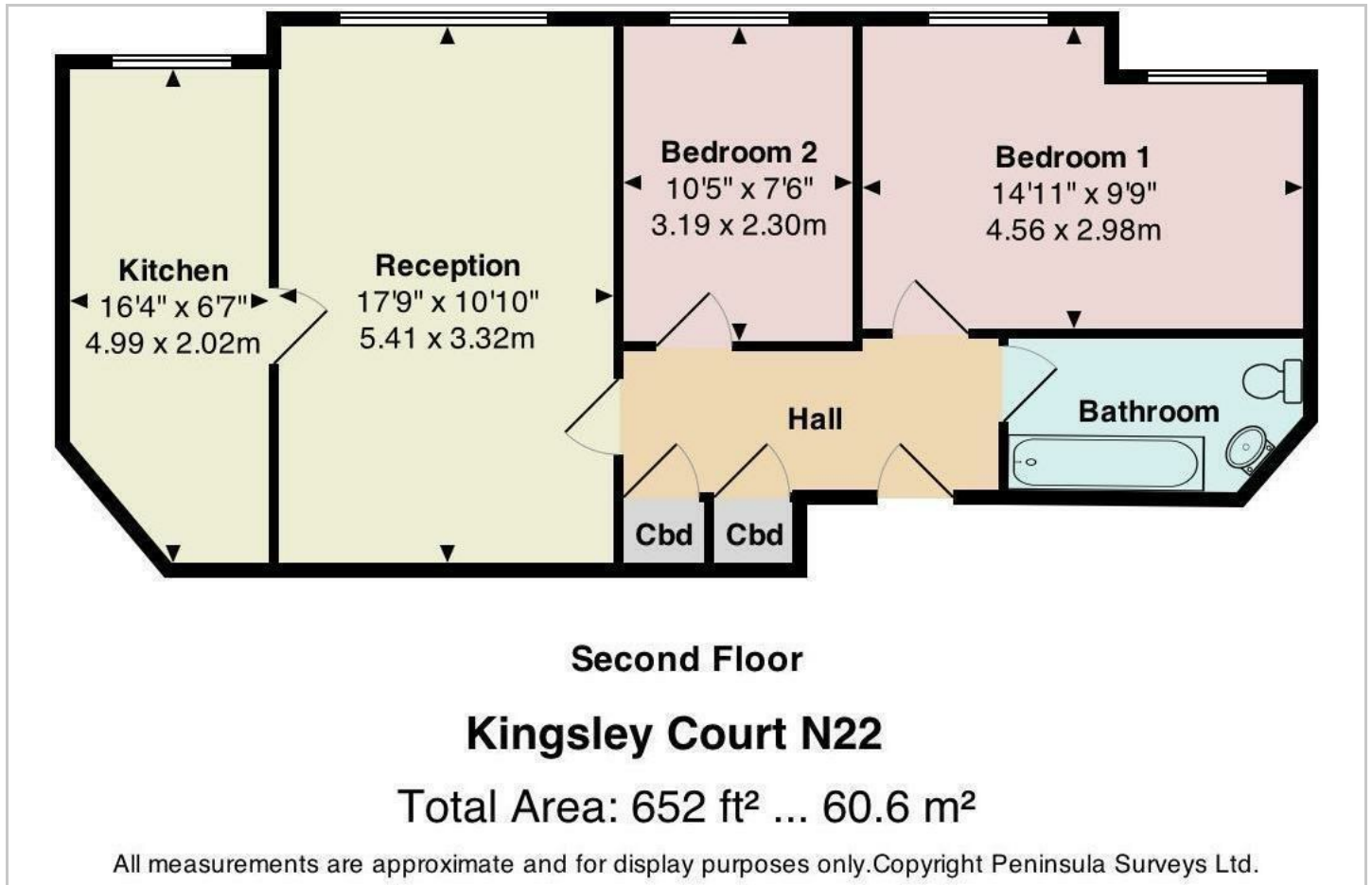
A well-proportioned two double bedroom second floor flat with private parking located close to Bound Green & Bowes Park stations the amenities of Myddleton Road & Green Lanes.

- Share of Freehold
- Close to Bowes Park station
- Communal Garden
- Close to Bounds Green Tube
- Private Parking
- Close to Parks
- Double Glazing
- Minutes' Walk to Myddleton Rd

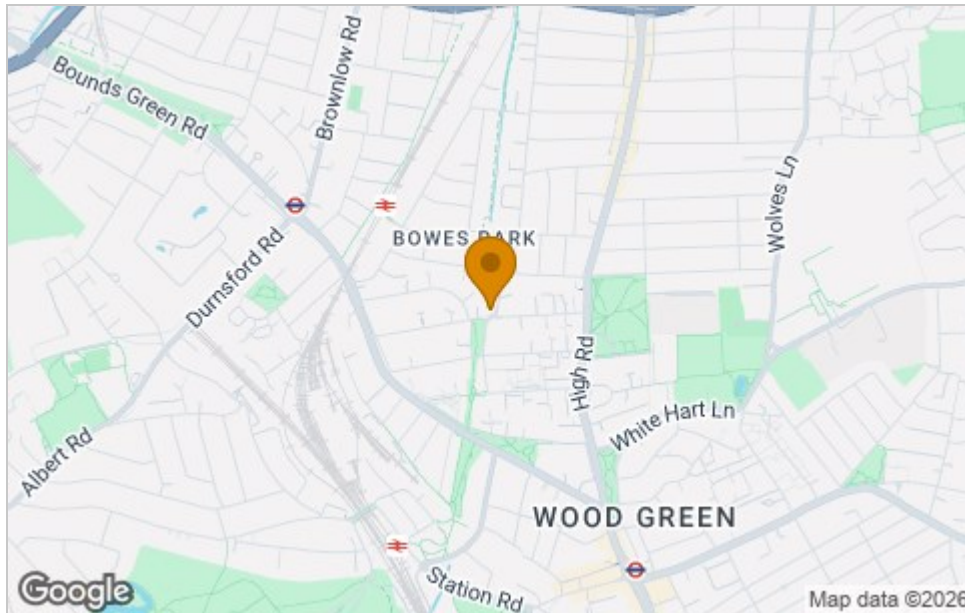




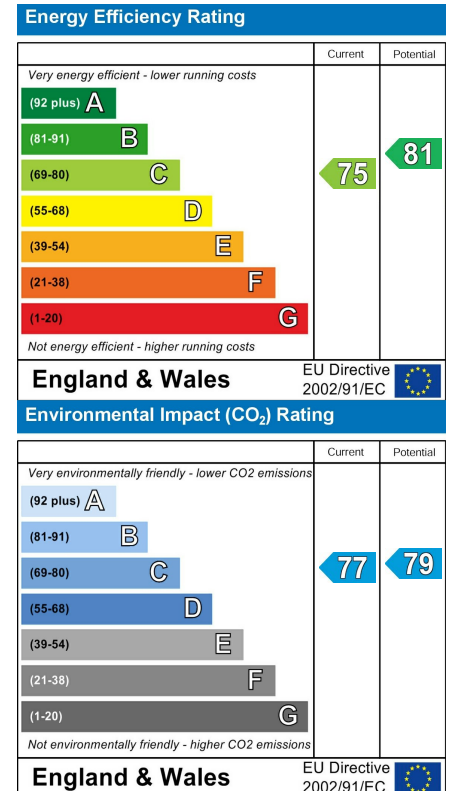
Floor Plan



Area Map



Energy Efficiency Graph



Viewing

Please contact our James Edward Office on 020 7952 5197 if you wish to arrange a viewing appointment for this property or require further information.

These particulars, whilst believed to be accurate are set out as a general outline only for guidance and do not constitute any part of an offer or contract. Intending purchasers should not rely on them as statements of representation of fact, but must satisfy themselves by inspection or otherwise as to their accuracy. No person in this firm's employment has the authority to make or give any representation or warranty in respect of the property.