



Belsize Grove NW3

Parkheath  
*Sold on Service*





## Belsize Grove, NW3

### Asking Price £670,000

### Share of Freehold

- Beautifully presented 2 bedroom apartment
- Set in stylish, grand white stucco fronted building
- Lift
- Expansive lawned communal gardens
- Bright and spacious 21ft open plan reception
- Contemporary kitchen with breakfast bar
- 12ft principal bedroom, plus 9ft 2nd bedroom/Study
- 635 sq ft approx on 3rd floor
- Share of freehold
- Enviable central Belsize Park location, moments to underground, shops and cafés

Belsize Park/Hampstead  
208 Haverstock Hill  
NW3 2AG  
Sales 020 7431 1234  
Lettings 020 7431 3104  
[nw3@parkheath.com](mailto:nw3@parkheath.com)

South/West Hampstead  
192 West End Lane  
NW6 1SG  
Sales & Lettings  
Tel 020 7794 7111  
[192@parkheath.com](mailto:192@parkheath.com)

Property Management  
192 West End Lane  
NW6 1SG  
020 7433 6174  
[pm@parkheath.com](mailto:pm@parkheath.com)

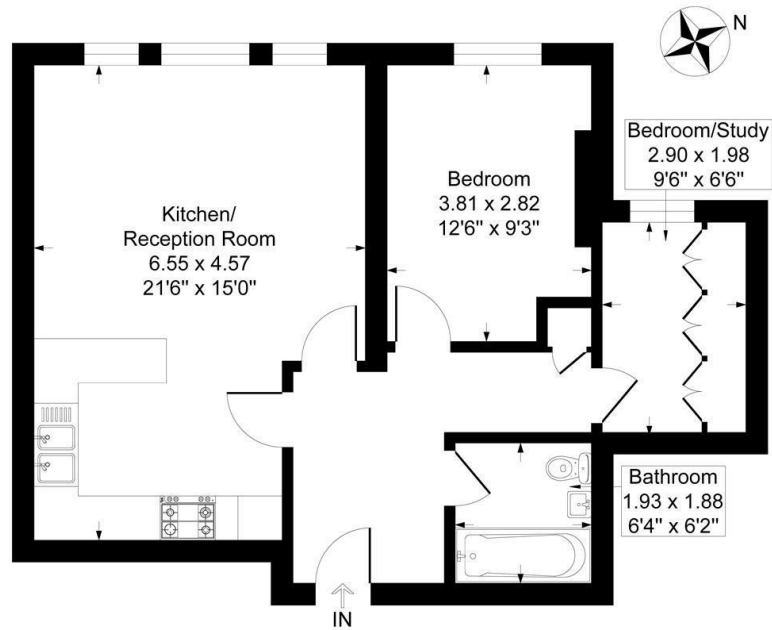
[www.parkheath.com](http://www.parkheath.com)

**Camden Tax band F**

**Parkheath**  
*Sold on Service*

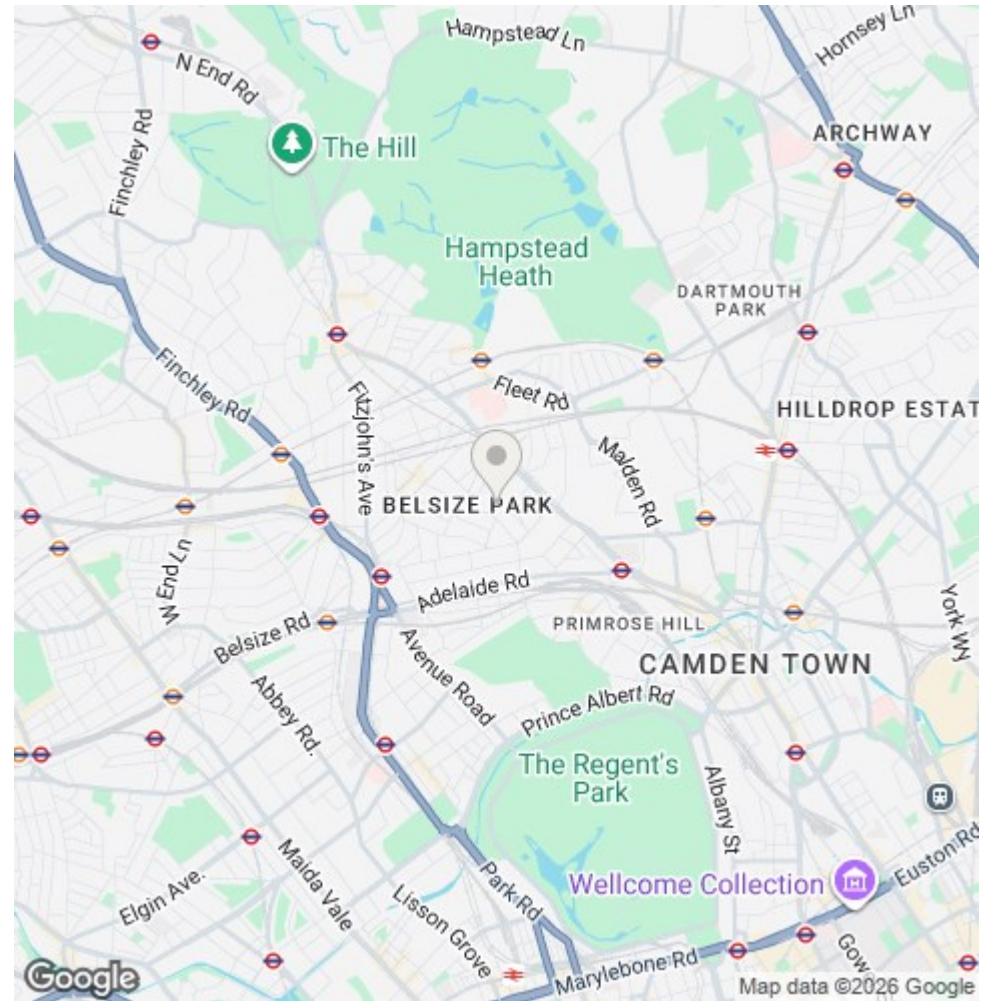
## Ormonde Court Belsize Grove. NW3

Approximate Gross Internal Floor Area = 59.0 sq m / 635 sq ft



### Third Floor

Illustration for identification purposes only, measurements are approximate, not to scale.



The particulars do not constitute part of an offer or contract. The particulars, including text, photographs and plans, are for the guidance only of prospective purchasers/tenants and must not be relied upon as statements of fact. The descriptions provided therein represent the opinion of the author and whilst given in good faith should not be construed as statements of fact. Nothing in these particulars shall be deemed a statement that the property is in good condition or otherwise or that any services or facilities are in good working order. All measurements are approximate