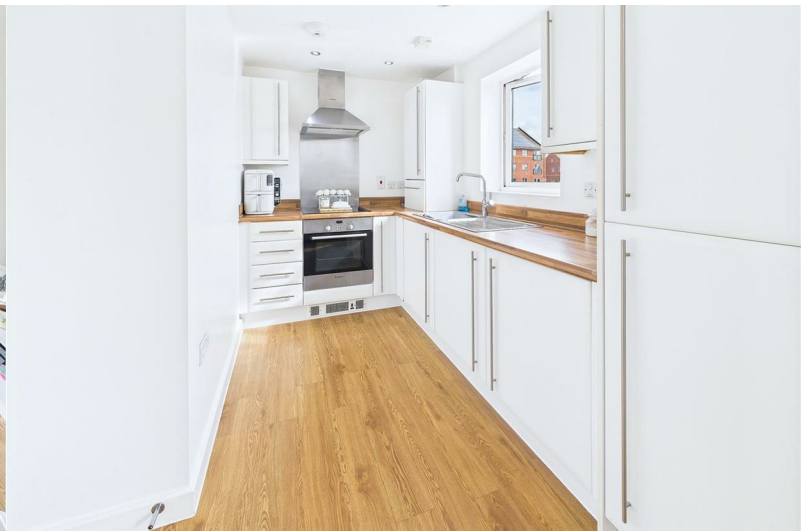




14 Hamilton Court Powell Road

Basildon, SS15 6HZ

Asking price £190,000



14 Hamilton Court Powell Road

Basildon, SS15 6HZ

Asking price £190,000



Communal Entrance

A secure entrance door, stairs to all floor.

Entrance Hallway

11'7 x 6'6 (3.53m x 1.98m)

Entrance door leading to all rooms. Laminate flooring.

Door entry system. Storage cupboard

Bedroom

9'6 x 11'5 (2.90m x 3.48m)

Double glazed window to front. Laminate flooring.

Radiator. Fitted wardrobe.

Kitchen/Living area

23'6" x 9'3" (7.16m x 2.82m)

Double glazed doors to front leading to 'Juliet Balcony, window to side.. Range of fitted storage units with integrated fridge/freezer, washing machine and electric oven. Work surfaces incorporate sink unit and electric hob with extractor hood over.

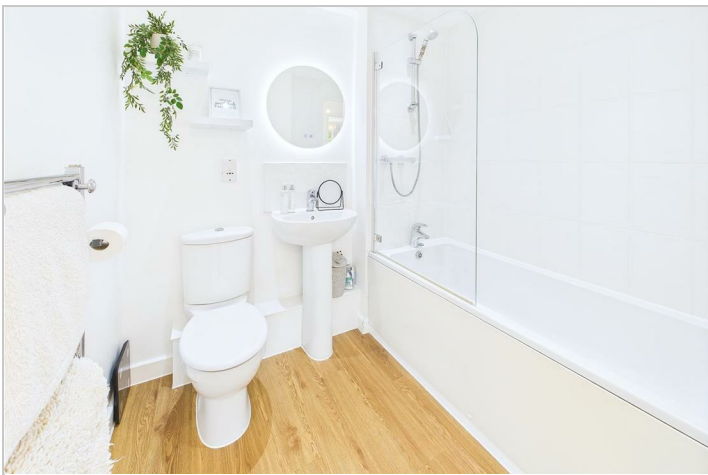
Bathroom

7'0 x 6'3 (2.13m x 1.91m)

Modern Three piece white suite comprising close coupled WC, bath with glass screen & shower attachments and wash hand basin. Chrome effect heated towel rail. Laminate flooring.

Agent Notes

Should you be successful in having an offer accepted on a property through ourselves, then there is an administration charge of £54.00 inc. VAT (non-refundable) to complete our Anti Money Laundering Identity checks.



Road Map



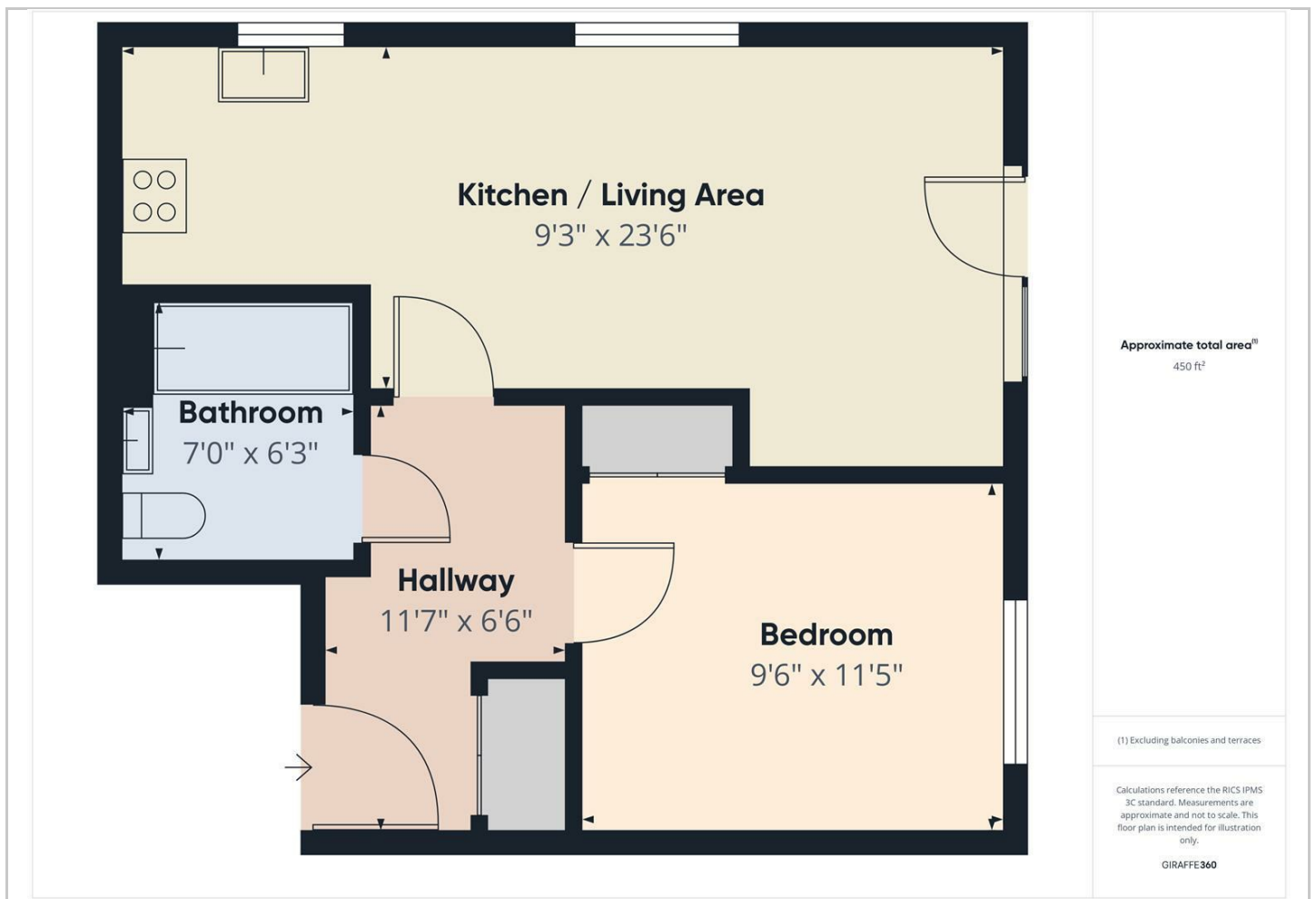
Hybrid Map



Terrain Map



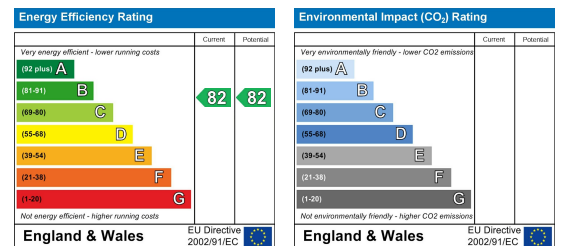
Floor Plan



Viewing

Please contact our Chelmsford Office on 01245 330764 if you wish to arrange a viewing appointment for this property or require further information.

Energy Efficiency Graph



These particulars, whilst believed to be accurate are set out as a general outline only for guidance and do not constitute any part of an offer or contract. Intending purchasers should not rely on them as statements of representation of fact, but must satisfy themselves by inspection or otherwise as to their accuracy. No person in this firm's employment has the authority to make or give any representation or warranty in respect of the property.