

# Frank Harris — & Co. —



**City of London, EC1A**

**£519 Per week**

This is a smart, modern studio apartment in a wonderful City location. Situated on the 5th floor of a well maintained development (with a 24h porter), the flat has a contemporary interior and is furnished.



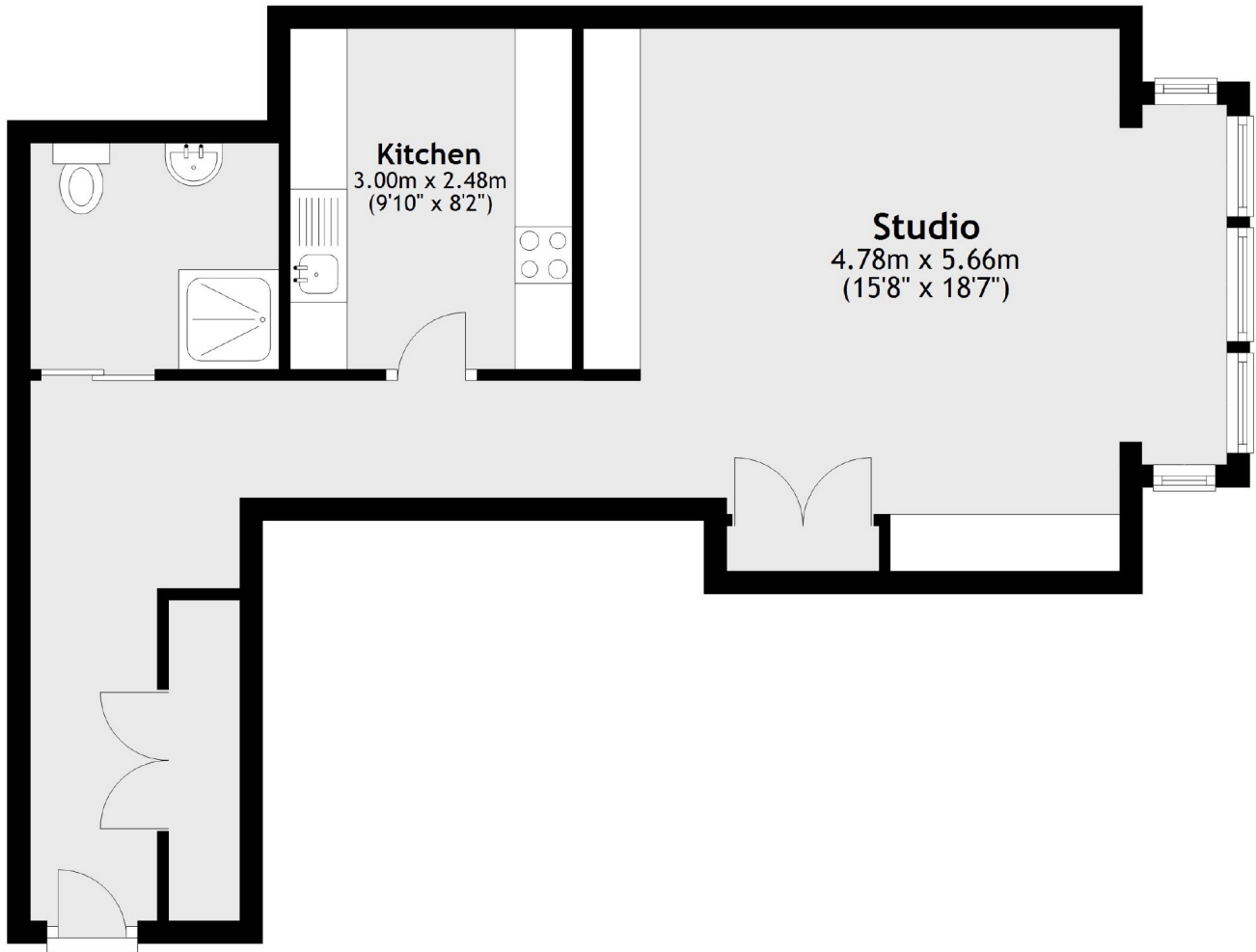
Hosier Lane is one of the narrow side street running off West Smithfield in this historic part of the City. Nearest public transport links are at Farringdon, City Thameslink and Barbican stations.

- Studio Apartment • Quiet Location • Contemporary Interior •
  - Wood Floors • Furnished • 24h Concierge •
-





# Frank Harris & Co.



Total area: approx. 49.4 sq. metres (532.2 sq. feet)

Frank Harris & Co. Barbican and City  
87 Long Lane, London, EC1A  
9ET  
020 7601 1919  
[citylettings@frankharris.co.uk](mailto:citylettings@frankharris.co.uk)

Energy Rating: C. We aim to make our particulars both accurate and reliable. However they are not guaranteed; nor do they form part of an offer or contract. If you require clarification on any points then please contact us, especially if you're traveling some distance to view. Please note that appliances and heating systems have not been tested and therefore no warranties can be given as to their good working order.

