



Shotford Hall Cottages | Redenhall | Harleston | IP20 9QT

£950 PCM

**DURRANTS**  
SINCE 1853

## Key features

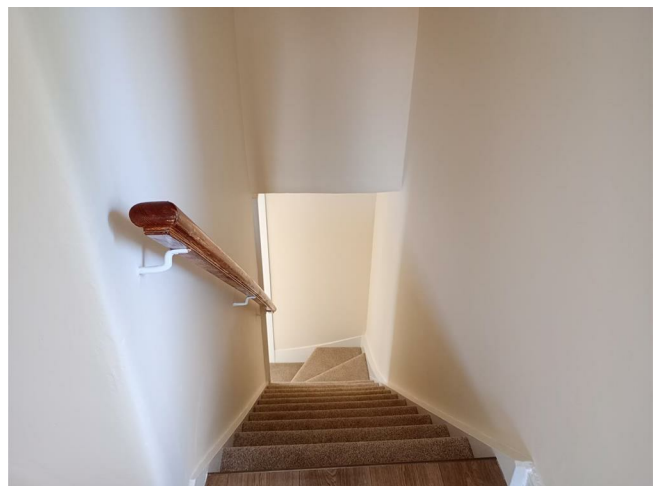
- Period Cottage
- 2 Bedrooms
- Off Road Parking
- Garden
- Views to Open Countryside

## Description

Two bedroom semi detached cottage with off road parking, garden and oil fired central heating. Located just outside Harleston with views to open countryside. The landlord may, at his discretion, consider a pet.

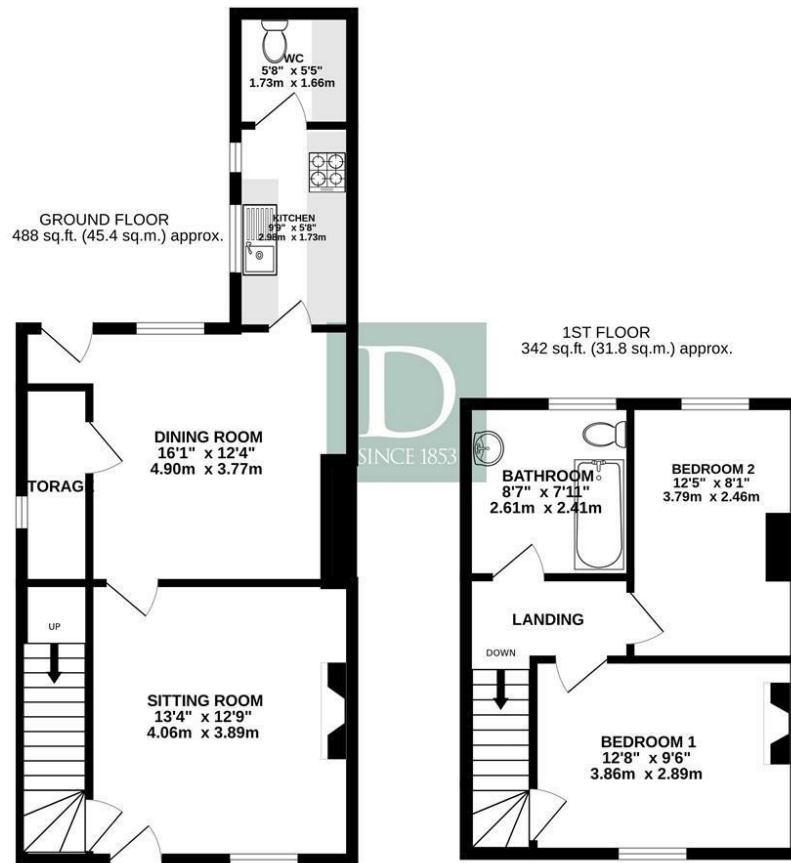


## Directions





# Floor plans



TOTAL FLOOR AREA: 831 sq.ft. (77.2 sq.m.) approx.

Whilst every attempt has been made to ensure the accuracy of the floorplan contained here, measurements of doors, windows, rooms and any other items are approximate and no responsibility is taken for any error, omission or mis-statement. This plan is for illustrative purposes only and should be used as such by any prospective purchaser. The services, systems and appliances shown have not been tested and no guarantee as to their operability or efficiency can be given.  
Made with Metropix ©2024

Energy Efficiency Rating		
	Current	Potential
Very energy efficient - lower running costs		
(92 plus) <b>A</b>		
(81-91) <b>B</b>		
(69-80) <b>C</b>		
(55-68) <b>D</b>		
(39-54) <b>E</b>		
(21-38) <b>F</b>		
(1-20) <b>G</b>		
Not energy efficient - higher running costs		
<b>England &amp; Wales</b>	EU Directive 2002/91/EC	



32-34 The Thoroughfare  
Harleston  
Norfolk  
IP20 9AU  
01379 852217  
harleston@durrants.com  
<https://durrants.com/>