



## Sloane Avenue, SW3

£585,000

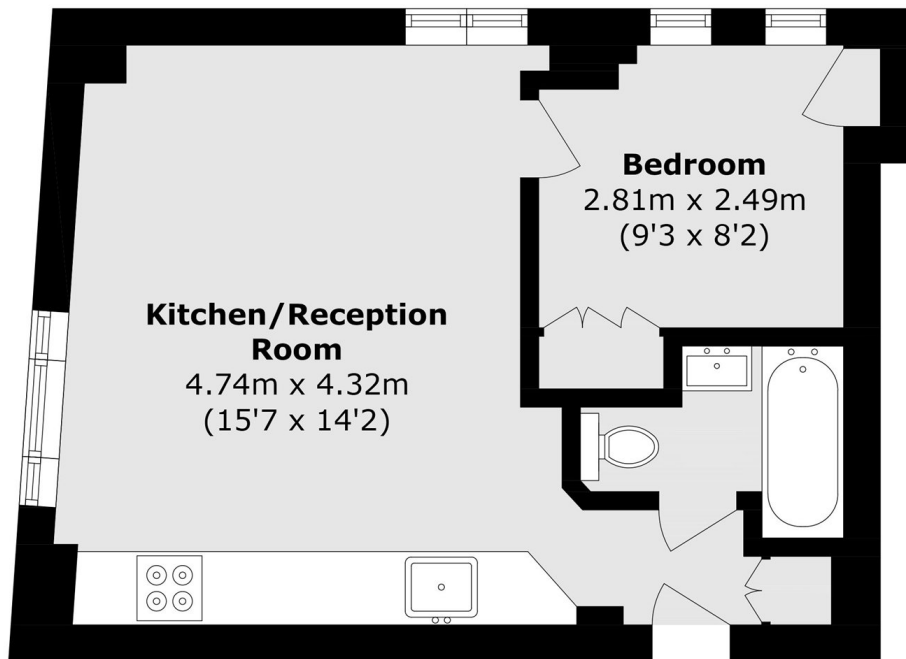
A one bedroom apartment in great condition with the benefit of residential porters. This property would be an ideal rental investment or London base.

Nell Gwynn House is a notable Art Deco residential building located on Sloane Avenue. Built in 1937 and designed by architect G. Kay Green, the building is famous for its unique "W" shaped footprint.

### Features

- One Bedroom
- Porter
- Popular Location
- Great Condition
- Long Leasehold
- Excellent Rental Investment

# Sloane Avenue, London, SW3



## Ground Floor

Total area (approx.): 30.0 sq. m (322.9 sq. ft)