
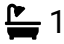





Property Webb
At the HEART of your move

1a Almondell Road,

Offers Over £100,000

 3  1  1



A beautifully refreshed first-floor period flat with private main door access, set just off Broxburn's High Street. Offering flexible living with up to 3 bedrooms, a bright south-facing aspect, spacious kitchen/diner, and a 4-piece bathroom. Offering character, flexibility and convenience in equal measure, this is a home that will appeal to first-time buyers, investors and those simply looking for a unique and well-located property with space to grow into.

 01506 637553

 info@property-webb.co.uk

 www.property-webb.co.uk

 71 South Bridge St, Bathgate, EH48 1TJ

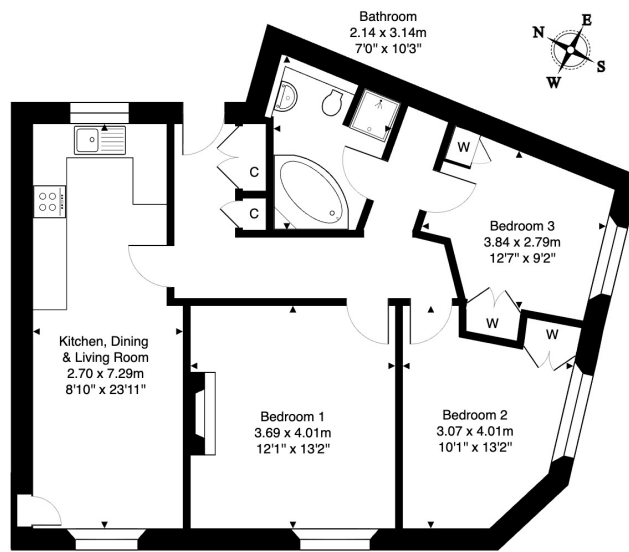


Property Webb
At the HEART of your move

Key Features

- First floor period flat
- 2/3 bedroom flat
- 2 double bedrooms
- Great storage
- On-street parking
- Freshly painted through-out
- Spacious Kitchen/dining room
- Four piece bathroom
- High street location
- Ideal for first time buyer or investor

1A Almondell Road, Broxburn, EH52 5QG



First Floor

Total Area: 72.3 m² ... 778 ft²

All measurements are approximate and for display purposes only.

01506 637553

info@property-webb-co.uk

www.property-webb.co.uk

71 South Bridge St, Bathgate, EH48 1TJ