



**Daffodil Close, Stowupland, Stowmarket, IP14 4FW**

**welcome to**

## **Daffodil Close, Stowupland, Stowmarket**

This well-presented three bedroom detached house is ready for you to move straight in. With modern accommodation throughout it is an ideal family home, therefore viewings on this property are highly recommended. Call now to book your viewing

### **Accommodation**

The ground floor consists of a stylish open plan kitchen / dining room with double patio doors which open out onto the private rear garden which is not overlooked. The contemporary upgraded fitted Symphony kitchen offers and abundance of storage facilities including a larder upgrade, cleverly hidden behind sleek cupboard doors and plumbing for a dishwasher. The bright and spacious living area with dual aspect windows provides plenty of natural light, forming an extremely inviting atmosphere to relax in with your family and friends. The contemporary cloakroom features Roca and Hansgrohe Sanitary ware, and under stairs cupboard completes the ground floor.

Up the staircase the three double bedrooms can be found. The master bedroom benefits from an en-suite shower room and built in wardrobe. Both bedroom two and three are double bedrooms, the family bathroom features a sparkling white suite with chrome Hansgrohe fittings. There is also good storage on both floors for a growing family to utilize.

### **Entrance Hall**

The property is entered by a front aspect double glazed door with stairs leading to the first floor, under stairs cupboard, radiator and vinyl floor.

### **Lounge**

16' 1" x 10' 6" ( 4.90m x 3.20m )

Windows to front and side, TV point, radiator and carpeted flooring.

### **Kitchen/diner**

16' 1" x 10' 4" narrowing to 8' 9" ( 4.90m x 3.15m narrowing to 2.67m )

Windows to front and side, French doors to the rear garden, fitted with a range of wall and base units, single sink and drainer, electric oven and gas hob with extractor hood over, integrated fridge freezer, spaces for washing machine and tumble dryer, radiator and vinyl flooring.

### **Cloakroom**

Fitted with a low level flush WC, hand wash basin with mixer tap, extractor, radiator and vinyl flooring.

### **First Floor Landing**

Access to loft, built in cupboard and carpeted flooring.

### **Bedroom One**

10' 5" x 9' 3" Plus wardrobes ( 3.17m x 2.82m Plus wardrobes )

Window to rear, built in wardrobes, TV and telephone points, radiator and carpeted flooring.

### **En Suite**

Frosted window to front, fitted with a shower cubicle, pedestal wash hand basin and a low level W.C, recessed spotlights, extractor fan, part tiled walls, radiator and vinyl flooring.

### **Bedroom Two**

10' 8" x 8' ( 3.25m x 2.44m )

Windows to front and side, radiator and carpeted flooring.





### **Bedroom Three**

10' 8" x 7' 9" ( 3.25m x 2.36m )

Window to side, radiator and carpeted flooring.

### **Bathroom**

Frosted window to front, fitted with a low level flush W.C, hand wash basin with mixer tap and a panelled bath with mixer shower attachment, extractor fan, part tiled walls, heated towel rail and vinyl flooring.

### **Outside**

#### **Front Garden**

Small lawned area with path to front door.

#### **Rear Garden**

Fence and wall enclosed with rear access gate, patio and lawn areas, timber shed.

#### **Parking**

Off street parking for two cars is located to the rear of the property and visitors parking bay located on the road.



***view this property online*** [williamhbrown.co.uk/Property/SMK103598](http://williamhbrown.co.uk/Property/SMK103598)



welcome to

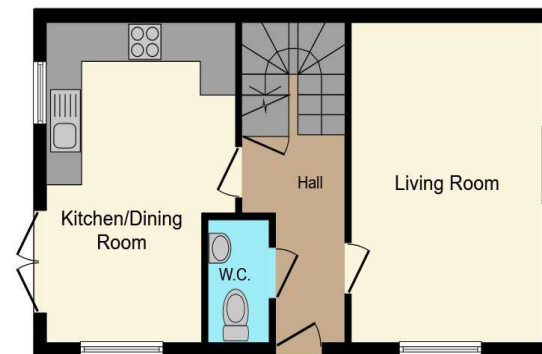
## Daffodil Close, Stowupland, Stowmarket

- Superfast fibre broadband
- Freehold
- This home generates over 60% less CO2 emissions than older properties
- High specification, energy efficient home
- Over 8 years left on NHBC warranty.

Tenure: Freehold EPC Rating: B

Council Tax Band: D

**£350,000**



Ground Floor



First Floor

This floorplan is for illustrative purposes only and is not drawn to scale. Measurements, floor-areas, openings and orientations are approximate. They should not be relied upon for any purpose and do not form any part of an agreement. No liability is taken for any error or mis-statement. All parties must rely on their own inspections.

view this property online [williamhbrown.co.uk/Property/SMK103598](http://williamhbrown.co.uk/Property/SMK103598)



Property Ref:  
SMK103598 - 0009

1. MONEY LAUNDERING REGULATIONS Intending purchasers will be asked to produce identification documentation at a later stage and we would ask for your co-operation in order that there is no delay in agreeing the sale. 2. These particulars do not constitute part or all of an offer or contract. 3. The measurements indicated are supplied for guidance only and as such must be considered incorrect. Potential buyers are advised to recheck measurements before committing to any expense. 4. We have not tested any apparatus, equipment, fixtures or services and it is in the buyers interest to check the working condition of any appliances. 5. Where an EPC, or a Home Report (Scotland only) is held for this property, it is available for inspection at the branch by appointment. If you require a printed version of a Home Report, you will need to pay a reasonable production charge reflecting printing and other costs. 6. We are not able to offer an opinion either written or verbal on the content of these reports and this must be obtained from your legal representative. 7. Whilst we take care in preparing these reports, a buyer should ensure that his/her legal representative confirms as soon as possible all matters relating to title including the extent and boundaries of the property and other important matters before exchange of contracts.

William H Brown is a trading name of Sequence (UK) Limited which is registered in England and Wales under company number 4268443. Registered Office is Cumbria House, 16-20 Hockliffe Street, Leighton Buzzard, Bedfordshire, LU7 1GN. VAT Registration Number is 500 2481 05.

 william h brown



**01449 614459**



[stowmarket@williamhbrown.co.uk](mailto:stowmarket@williamhbrown.co.uk)



10 Wilkes Way, STOWMARKET, Suffolk, IP14 1DE



[williamhbrown.co.uk](http://williamhbrown.co.uk)