



5 Ark Cottages Canterbury Road, Etchinghill - CT18 8DE

Guide Price £285,000

Approximate Gross Internal Area = 107 sq m / 1147 sq ft

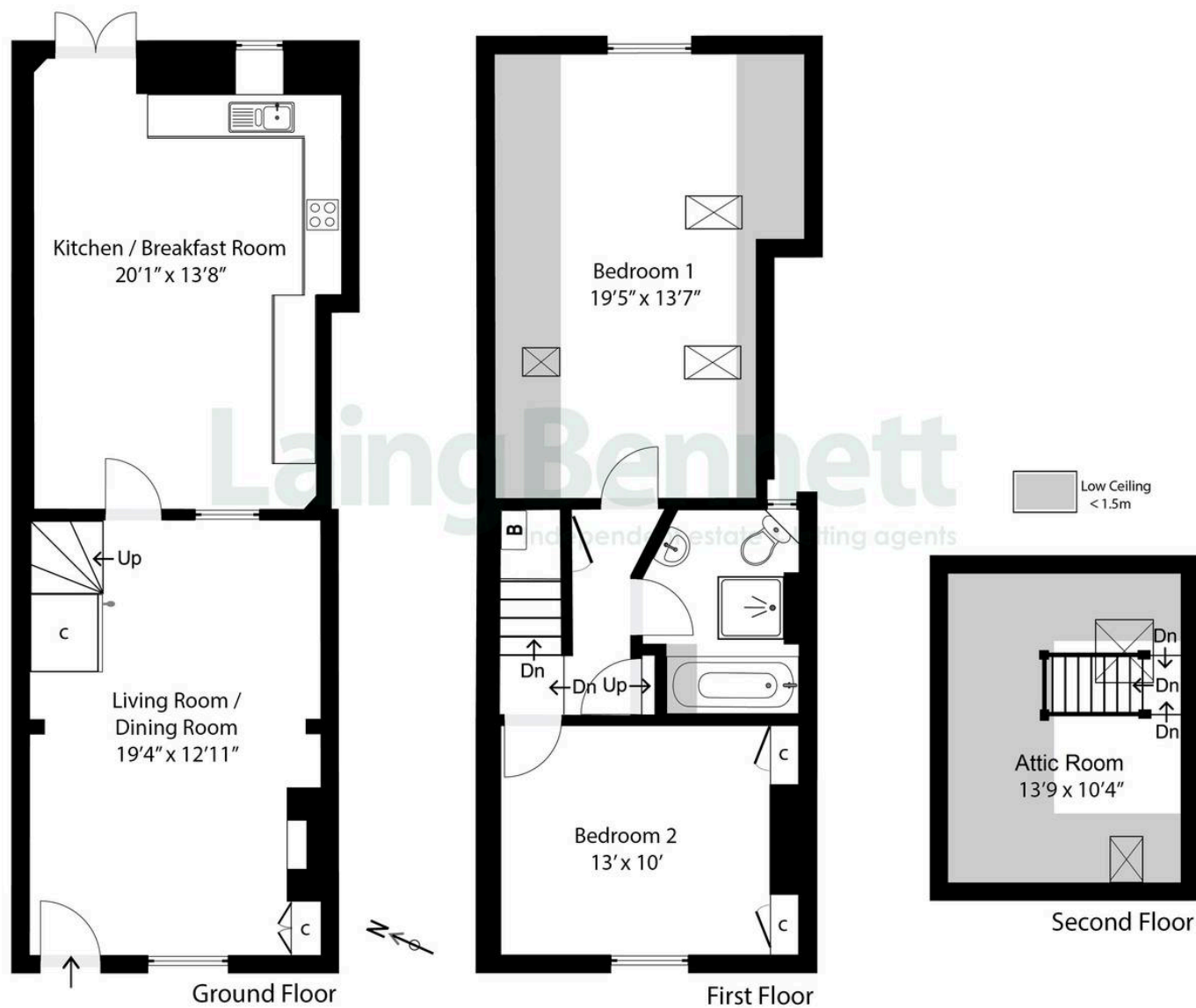


Illustration for Identification purposes only. Measurements are approximate. Dimensions given are between the widest points.
Not to scale. Outbuildings are not shown in actual location.
© Unauthorised reproduction prohibited - chriskemps@hotmail.com



5 Ark Cottages Canterbury Road

Etchinghill, Folkestone

Price range £285,000 – £300,000. This terraced period cottage is situated in the centre of the village. The ground floor welcomes you with a spacious living/dining room with a doorway leading into a generously sized kitchen/breakfast room. Upstairs, the first floor hosts two bedrooms and a main bathroom. A versatile top-floor room which could be a home office, or a creative space. To the front of the property is space to park a car. There is a long cottage garden with lawn and mature borders. Located close to local amenities and in a village surrounded by scenic countryside, this delightful cottage offers the best of village living with excellent transport links nearby.

Council Tax band: B

Tenure: Freehold

EPC Energy Efficiency Rating: C

EPC Environmental Impact Rating: D









Laing Bennett

Laing Bennett Ltd, The Estate Office, 8 Station Road – CT18 8HP

01303 863393 • info@laingbennett.co.uk • www.laingbennett.co.uk/

DISCLAIMER – These details are for guidance only and do not form part of an offer or contract. Measurements are approximate. Laing Bennett Ltd and the Vendor/Landlord accept no liability. Services and appliances are untested. Applicants must make their own checks. Items shown may not be included. No staff have authority to give warranties.