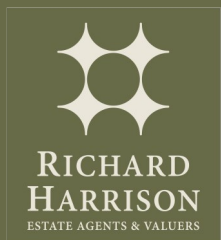




Fairmeadows Way | | Loughborough | LE11 2QT

Asking price £379,950

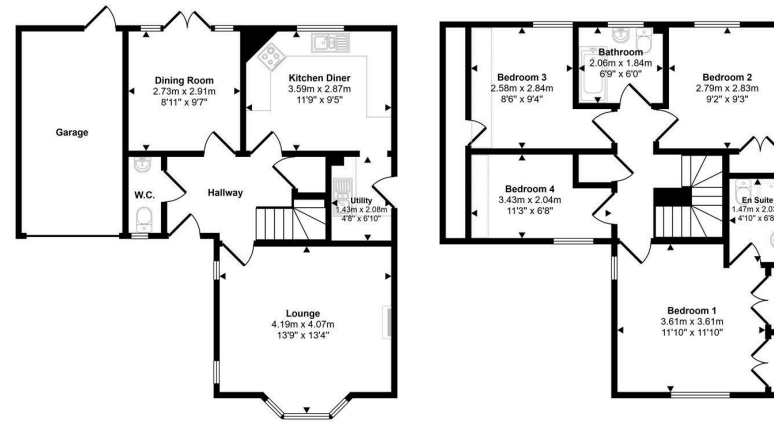


Fairmeadows Way |
 Loughborough | LE11 2QT
 Asking price £379,950

Set in a lovely position opposite a green space, this 4 bed detached home is an ideal family property located in this highly popular area close to Woodbrook Secondary School and Outwoods Edge Primary School. The accommodation comprises hallway, w/c, lounge, dining room, kitchen and utility room. The first floor landing gives way to 4 bedrooms, en-suite and family bathroom. Outside is parking for two cars, garage and gardens front and rear. THE PROPERTY IS IN NEED OF MODERNISATION AND IS PRICED ACCORDINGLY.



Approx Gross Internal Area
 120 sq m / 1291 sq ft



Ground Floor
 Approx 62 sq m / 667 sq ft

First Floor
 Approx 58 sq m / 624 sq ft

☐ Denotes head height below 1.5m

This floorplan is only for illustrative purposes and is not to scale. Measurements of rooms, doors, windows, and any items are approximate and no responsibility is taken for any error, omission or mis-statement. Icons of items such as bathroom suites are representations only and may not look like the real items. Made with Made Snappy 360.

Energy Efficiency Rating		Current	Potential
Very energy efficient - lower running costs			
(92 plus) A			
(81-91) B			
(69-80) C			
(55-68) D		55	71
(39-54) E			
(21-38) F			
(1-20) G			
Not energy efficient - higher running costs			
England & Wales		EU Directive 2002/91/EC	

16 Churchgate
 Loughborough
 Leicestershire
 LE11 1UD
 01509 977 889
 sales@richard-harrison.co.uk