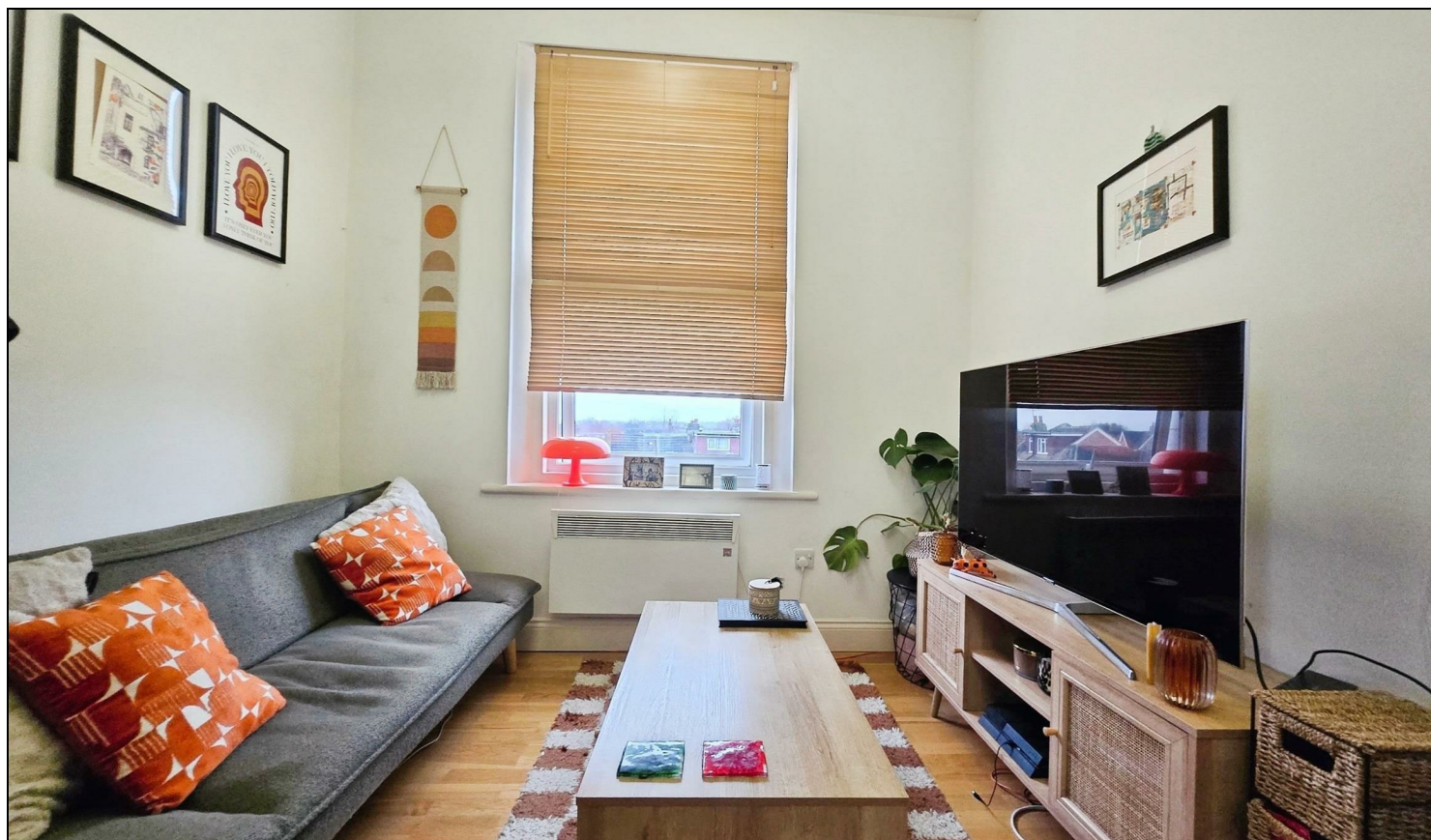


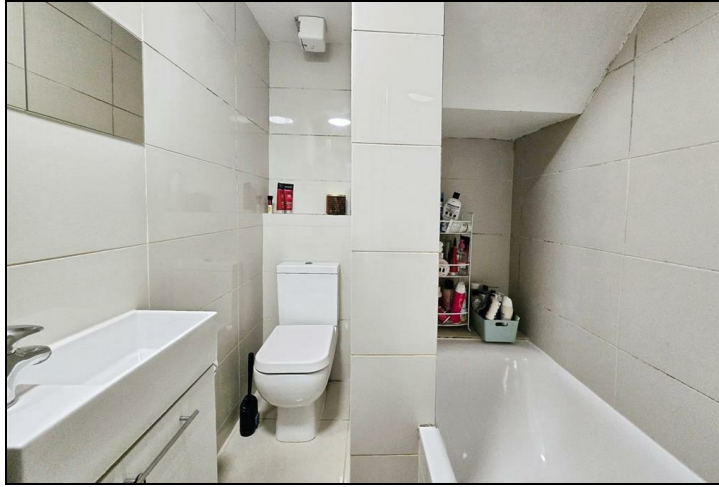
Worple Road Raynes Park, SW20 8PR

£1,400 PCM



TASTEFULLY DECORATED ONE BED conversion flat located between Wimbledon and Raynes Park stations.
Offers a generously sized bedroom with lots of space to add storage, bathroom shower and an open plan
kitchen/living room.
Offered unfurnished

EPC E.
Council Tax Band B



- One Bedroom
- First Floor
- Unfurnished
- Wooden Floors Throughout
- Can Get Residence Parking Permit
- Holding Deposit Required Once Accepted
- Five Weeks Deposit
- One Months Rent
- Council Tax Band B
- EPC E

