



**Guide Price**  
**£310,000**

**Freehold**

3x  1x  2x 

**Freshwater Road,  
Walderslade, Chatham,  
Kent, ME5**

*Wards*  
Helping you move forwards



## Main features

- Immaculate semi detached house
- Lounge with separate dining room
- Updated kitchen and bathroom
- Driveway to side, end plot rear garden
- A short drive to amenities, bus routes and schools

## Accommodation

### GROUND FLOOR

Entrance Hall

Lounge : 14'0 x 9'0 (4.27m x 2.75m)

Kitchen : 9'6 x 6'4 (2.90m x 1.93m)

Dining Area : 10'5 x 6'9 (3.18m x 2.06m)

### FIRST FLOOR

Landing

Bedroom 1 : 11'5 x 8'6 (3.48m x 2.59m)

Bedroom 2 : 9'6 x 6'5 (2.90m x 1.96m)

Bedroom 3/Study: 6'10 x 6'5 (2.08m x 1.96m)

Bathroom : 7'1 x 6'0 (2.16m x 1.83m)

### OUTSIDE

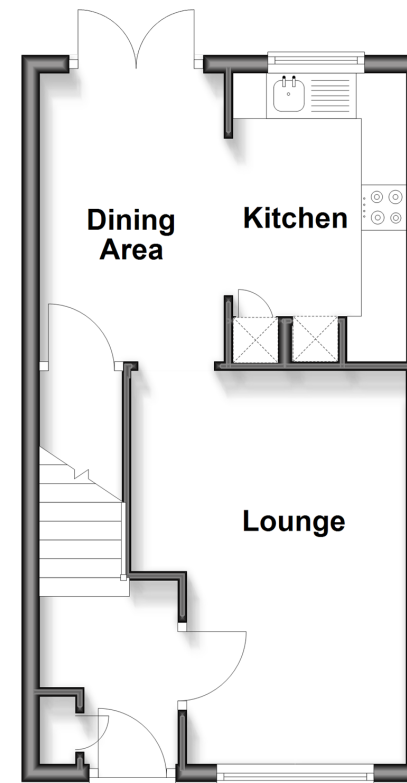
Driveway

Lean To : 14'7 x 7'7 (4.45m x 2.31m)

Large Corner Plot Rear Garden

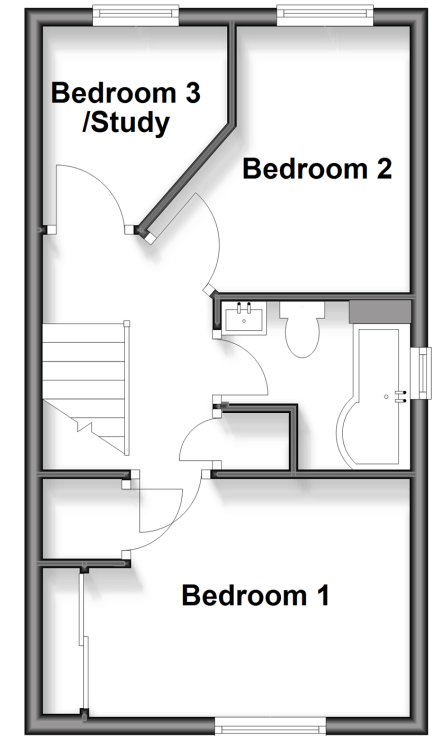
## Ground Floor

Approx. 31.1 sq. metres (334.4 sq. feet)



## First Floor

Approx. 31.1 sq. metres (334.4 sq. feet)



Call Walderslade - 01634 865661 ■ [wardsof Kent.co.uk](http://wardsof Kent.co.uk)

- Legal advice should be taken to verify fixtures/fittings, planning, alterations and/or lease details
- Appliances & services are untested, dimensions are approximate and floor plans are not to scale



12144779/20260311/ML/AJB