



## Station Parade, SW12

£1,400 Per calendar month

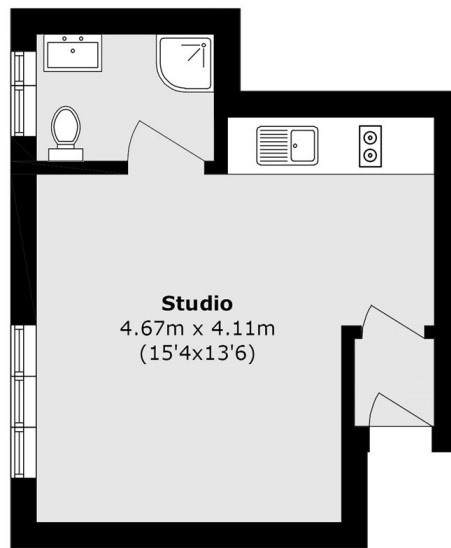
A sought after first floor studio flat in the heart of Balham, which has been recently decorated and offers wooden flooring throughout. Ideal for a professional couple or single occupant.

Balham High Road is ideally located for Balham mainline/ underground stations, as well as all of the shops, bars and restaurants local to the area.

### Features

- Studio Apartment
- First Floor Flat
- Modern Interior
- Wooden Flooring
- Recently Decorated
- Close To Transport

# Station Parade, London, SW12



Total area (approx.): 23.0 sq. m (247.6 sq. ft)