



Davis Road, W3

£550,000

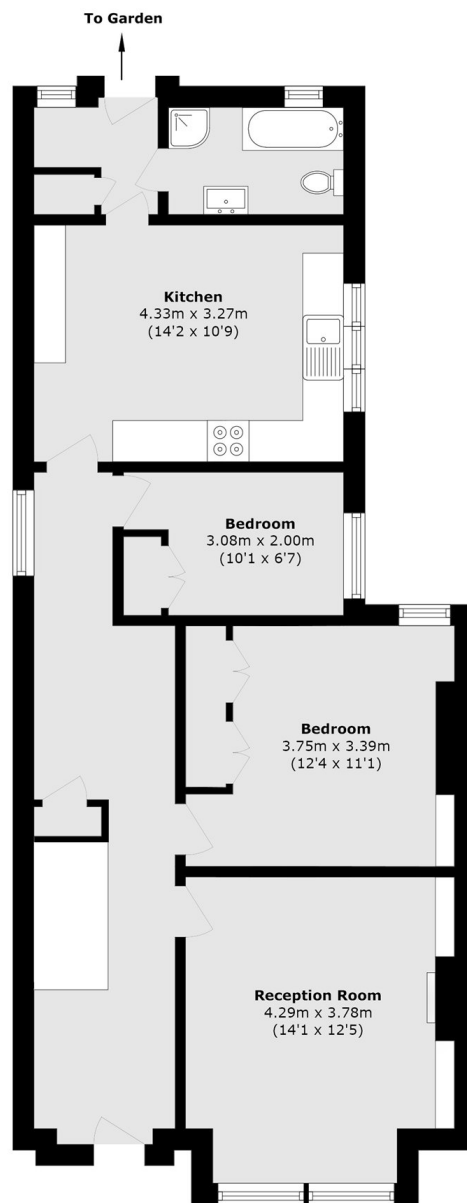
A charming ground floor period maisonette located on the borders on Askew village and Wendall Park. This home offers two bedrooms, a separate reception and kitchen diner. The property further benefits from a wrap around private garden and will be offered with no onward chain.

Located within a five minute walk from Wendall Park and 1.0 mile from Turnham Green station (Piccadilly and District line) which is also equidistant from Acton Central (Overground line).

Features

Offers in Excess of
Two Bedrooms
Own Entrance
Private Garden
Askew Village Borders
No Onward Chain
No Service or Ground Charges

Davis Road, London, W3



Total area (approx.): 75.2 sq. m (809.4 sq. ft)