



# Thornhill Road

Barnsbury, N1

£12,000 per month  
(£2,769.23 per week)

SHORT LET WITH BILLS INCLUDED! Refurbished (c1750sqft) period house that has been fully renovated to a very high standard. Location is convenient for many amenities and facilities on Upper Street with transport links at Highbury Corner and Angel.

**CHESTERTONS**



# Thornhill Road

## Barnsbury, N1

- SHORT LET - Bills included
- Fully refurbished house
- Three Double Bedrooms
- Family Home
- Great Location
- Barnsbury Conservation Area

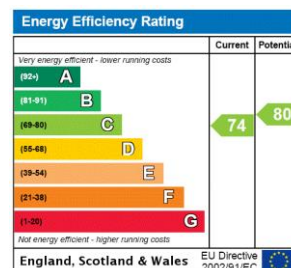


**SHORT LET WITH BILLS INCLUDED**

Newly refurbished house. An exceptional (c1750sqft) period house that has been fully renovated to a very high standard, with bright and spacious accommodation over three floors. The house is in the heart of the highly sought-after Barnsbury Conservation area, looking down Ripplevale Grove.

The ground floor comprises a large open plan kitchen/living area with beautiful marble counter tops and splash backs, contemporary built in Miele appliances, great storage and wooden floors. To the rear of the ground floor is a double bedroom with en-suite shower room, fitted cupboards, ideal for a quest or nanny. Guest WC.

**Minimum Term:** 2 months  
**Deposit Required:** £16,615.38  
**Local Authority:**  
**Council Tax Band:** G  
**EPC Rating:** C  
**Furnished, Part Furnished, Unfurnished**



**Chestertons Islington Lettings**

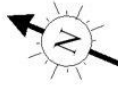
327-329 Upper Street  
 London  
 N1 2XQ  
 islingtonlettingsusers@chestertons.co.uk  
 02072264221  
 chestertons.co.uk

Additional tenant charges apply (fees apply to non-AST tenancies only)  
 Tenancy Agreement Fee: £300  
 References per Tenant/Guarantor: £60  
 Inventory check (approx. £100 – £250 inc. VAT)  
 chestertons.co.uk/property-to-rent/applicable-fees

# Thornhill Road, N1

Approximate gross internal area

160.72 sq m / 1730 sq ft

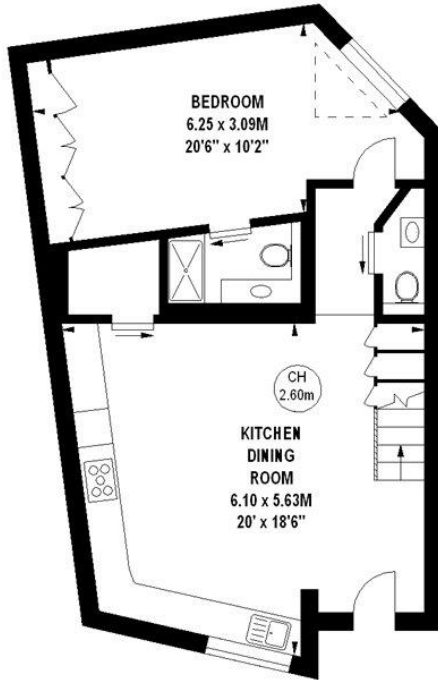


Key :  
CH - Ceiling Height



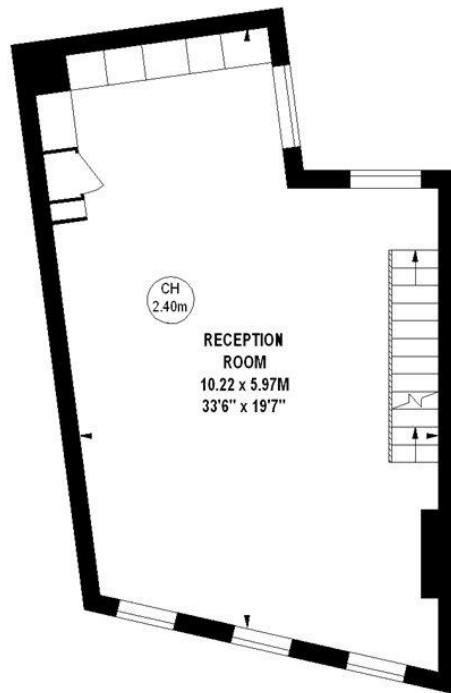
486 sq ft

**Second Floor**



640 sq ft

**Ground Floor**



604 sq ft

**First Floor**

The floor plan is not to scale and measurements and areas shown are approximate and therefore should be used for illustrative purposes only. The plan has been prepared in accordance with the RICS code of Measuring Practice and whilst we have confidence in the information produced, it must not be relied on. If there is any aspect of particular importance, you should carry out or commission your own inspection of the property.  
Copyright of FeaturePRO.

