

Kilburn Park Road, NW6

£1,038 Per week

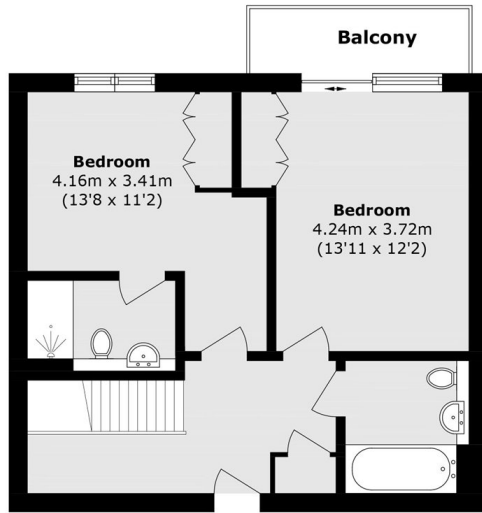
A remarkable three bedroom duplex apartment set in a modern purpose-built block. The property has been recently redecorated and is presented in great condition throughout. It comprises a spacious open plan kitchen/reception room with ample space for dining, three double bedrooms and three bathrooms, two of which are en-suite, as well as a large terrace and two further balconies. Further benefits include an underground parking space, underfloor heating, air-conditioning, wooden flooring throughout and a porter. The property is suitable for sharers.

Argo House is ideally located next to Paddington Recreation ground, offering both the tranquillity of Maida Vale and Little Venice, and the vibrant energy of Kilburn Park and Queens Park (Bakerloo line and Overground at Queen's Park).

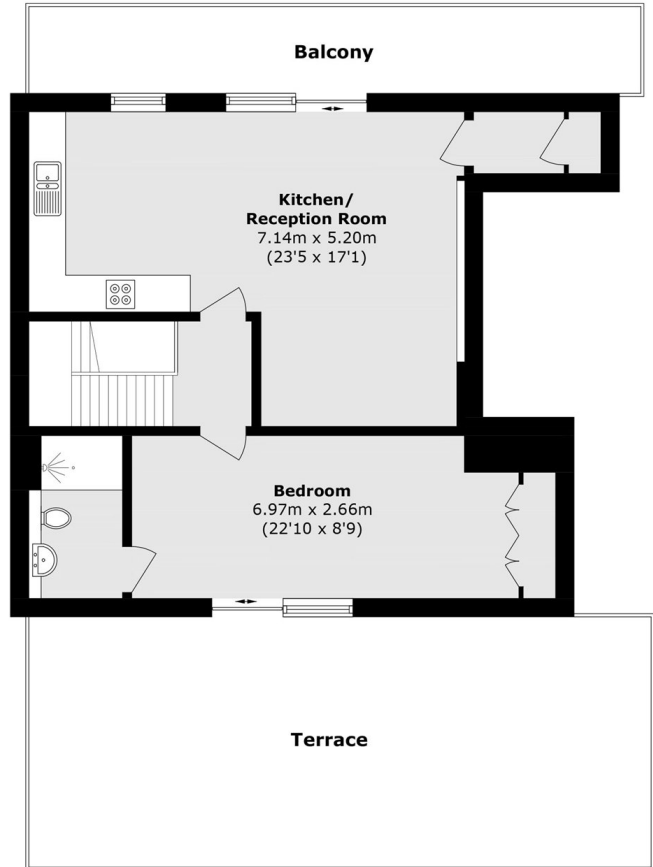
Features

- Duplex Apartment
- Three Bedrooms
- Three Bathroom
- Underground Parking
- Air-Conditioning
- Wooden Flooring

Kilburn Park Road, London, NW6



Third Floor



Fourth floor

Total area (approx): 110.0 sq. m (1184.0 sq. ft)
Balcony total (approx): 17.9 sq. m (192.6 sq. ft)
Terrace area (approx): 41.5 sq. m (446.7 sq. ft)