

# Coppermills

2 bedroom Flat

**Barbot Close, London, N9**

Offers in excess of £265,000 Leasehold

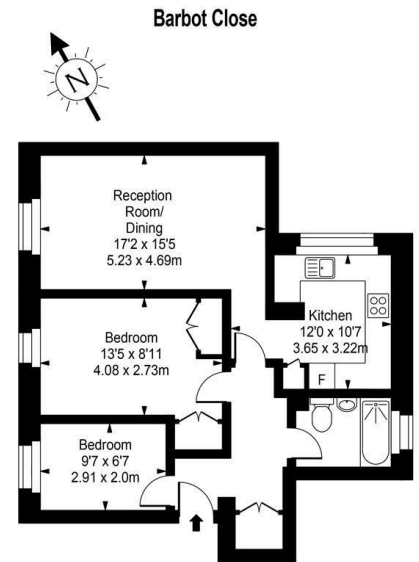


A great two bedroom second floor purpose built flat in need of modernisation. Walking distance to Edmonton green overground station. Communal gardens and parking. Ideal first time buyers purchase or buy to let investment.

To view this property  
[info@coppermills.co.uk](mailto:info@coppermills.co.uk)  
020 8509 9170

# Barbot Close, London, N9

*Ideal first time buyers purchase or buy to let investment.*

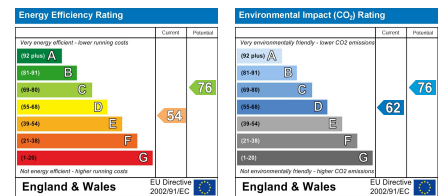


Second Floor

Approx Gross Internal Area 627 Sq Ft - 58.24 Sq M

For Illustration Purposes Only - Not To Scale  
 Floor plan by [www.bestangle.co.uk](http://www.bestangle.co.uk)

## EPC details



info@coppermills.co.uk  
 T: 020 8150 1177  
 M: 077 8217 0925  
 www.coppermills.co.uk  
 63 St James Street  
 London E17 7PJ

You may download, store and use the material for your own personal use and research. You may not republish, retransmit, redistribute or otherwise make the material available to any party or make the same available on any website, online service or bulletin board of your own or of any other party or make the same available in hard copy or in any other media without the owner's express prior written consent. The owner's copyright must remain on all reproductions of material taken.