



## BURTON ROAD, SW9

£475,000

Two double bedrooms  
Open plan  
Chain free  
Lots of light  
Beautifully presented  
Close to Myatt's Field Park

@marshandparsons  
marshandparsons.co.uk

MARSH &  
PARSONS



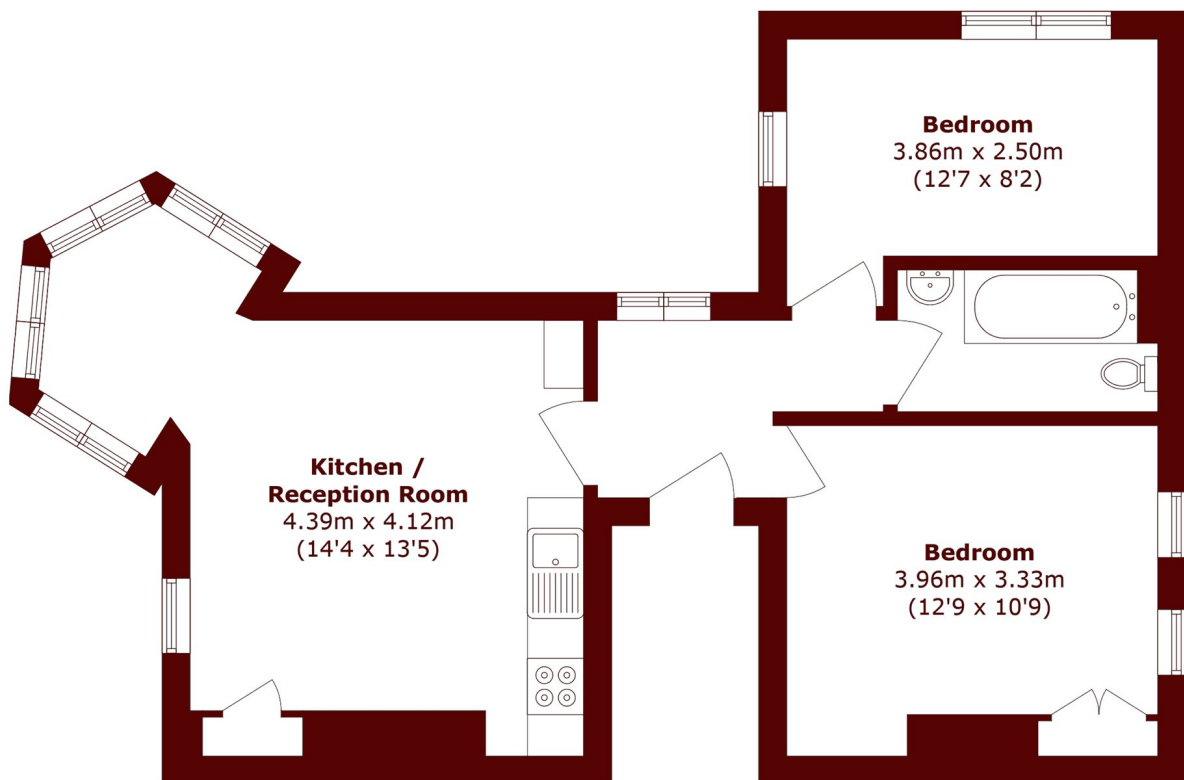
# ABOUT THE PROPERTY

A two bedroom apartment just moments from Myatt's Field Park, offering a bright and contemporary living space in an excellent location. The property features an open plan kitchen and reception room with a separate dining area, two well proportioned double bedrooms, and a modern bathroom. Beautifully presented throughout, the apartment benefits from a fresh, modern aesthetic.

Ideally located for green space lovers, Myatt's Field Park is right on your doorstep, while the vibrant amenities of Brixton, Stockwell, and Oval are nearby. Excellent transport links are provided via nearby underground stations, making this an ideal home for commuters and city living alike.



# STEP INSIDE BURTON ROAD



## Second Floor

Total area (approx.): 57.7 sq. m (621.1 sq. ft)

**Kennington**  
020 7587 1533

Energy Rating: D We aim to make our particulars both accurate and reliable. However, they are not guaranteed; nor do they form part of an offer or contract. If you require clarification on any points then please contact us, especially if you're traveling some distance to view. Please note that appliances and heating systems have not been tested and therefore no warranties can be given as to their good working order

**MARSH &  
PARSONS**