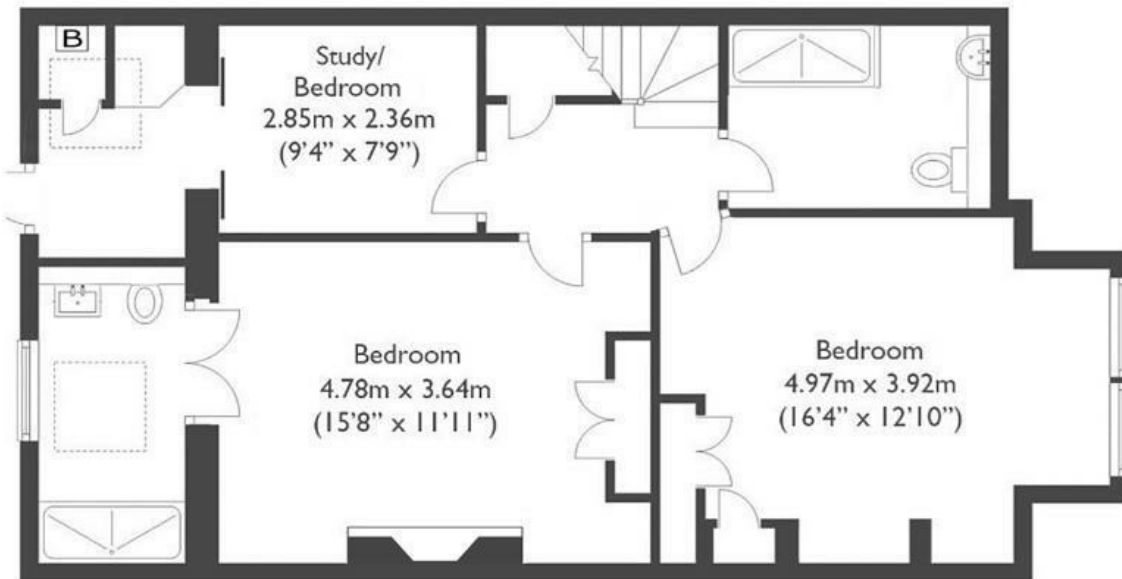


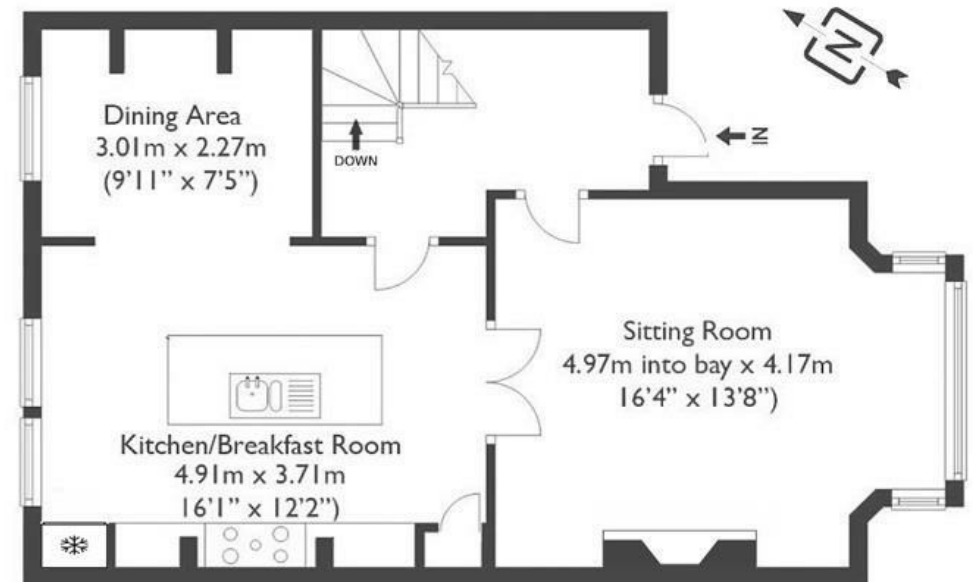
Royal Park

CLIFTON

APPROXIMATE FLOOR AREA
123.1 SQM / 1324 SQFT



Ground Floor



Raised Hall Floor

Boardwalk

Royal Park

, BRISTOL

£

£740,000



BS8 3AN

z z z

3 Bedrooms



2 Bathrooms

“What we’ve loved most about this home is sitting on the upstairs kitchen windowsills with a glass of wine on a warm summer’s evening with the sun filling the space with light.”

