





**Towers
Wills**

Town & Country

**Knackers Hollow, Higher Orchard, Bower Hinton, Somerset
TA12 6LQ**

£590,000

 01935 577 032 | 01460 298 530 |  info@towerswills.co.uk



Towers Wills welcome to the market, a beautiful detached family home situated in a private setback position of this sought after village the property offers tremendous light and spacious accommodation throughout briefly, comprising hallway, cloakroom/WC living room, dining room, kitchen, breakfast room, utility room office four bedrooms, en-suite, bathroom, shower room driveway garage and garden.

- * Detached Family Home
- * Four Bedrooms
- * Three Reception Rooms
- * Master Bedroom with En-suite
- * Countryside Views
- * Driveway & Garage
- * Sought after village
- * Beautiful garden





Knackers Hollow, Higher Orchard, Bower Hinton, Somerset TA12 6LQ

Tucked away in a private, set-back position within the highly sought-after village of Bower Hinton, this impressive four-bedroom detached family home offers spacious, versatile accommodation and beautifully maintained gardens backing onto orchards.

Score	Energy rating	Current	Potential
92+	A		
81-91	B		82 B
69-80	C	75 C	
55-68	D		
39-54	E		
21-38	F		
1-20	G		



A welcoming reception hallway with WC leads through to a stunning triple-aspect living room with high ceilings, flooding the space with natural light. A multi-fuel burning stove with feature surround creates a cosy focal point, while patio doors open directly onto the garden.

The heart of the home is the stylishly modernised kitchen/breakfast room, fitted with quality units, granite work surfaces, breakfast bar and integrated appliances, with a separate utility room providing additional practicality.

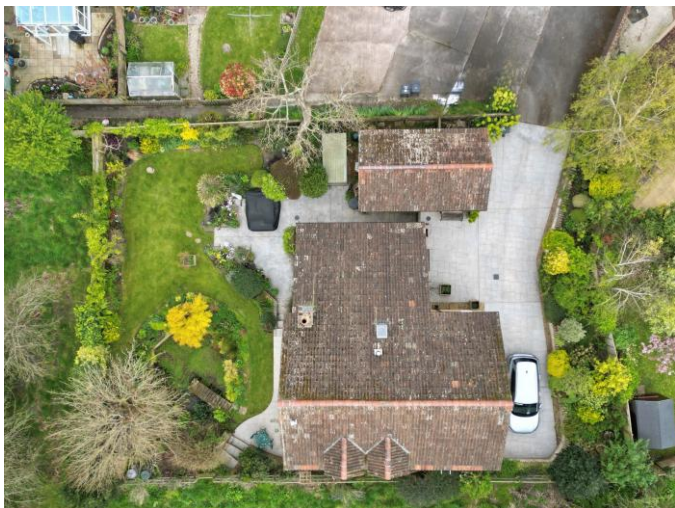
A formal dining room offers the perfect setting for entertaining, while a study—also suitable as a ground floor bedroom—adds flexibility for home working or guest accommodation.



Upstairs, four double bedrooms provide excellent family space, with the principal bedroom benefiting from an en-suite. The remaining bedrooms are served by both a family bathroom and an additional shower room.

Externally, the property truly excels, with a beautifully established rear garden enjoying a high degree of privacy and backing onto orchards.

Predominantly laid to lawn with mature planting, patio seating areas and a pond, it's ideal for outdoor living and entertaining. Further benefits include a large driveway providing ample parking, gated side access and a generous garage with power and light.



Bower Hinton is a charming and picturesque hamstone village in South Somerset, situated on the edge of the larger village of Martock and surrounded by beautiful rolling countryside. With a rich history dating back to the Domesday Book, the village offers a peaceful, rural lifestyle while remaining well connected to nearby towns and key road links such as the A303.

At the heart of the village is a strong sense of community, complemented by local amenities including the well-regarded The Hollies Hotel, which provides a popular restaurant, bar and accommodation, making it a social hub for both residents and visitors. The village itself retains a quintessential English feel, with attractive period properties, quiet lanes and access to scenic walks right on the doorstep.

While Bower Hinton enjoys a tranquil setting, it benefits greatly from its proximity to Martock, which offers a wide range of day-to-day amenities including independent shops, cafés, pubs, a supermarket, health services and schooling. The area is also well served by transport links, with regular bus routes connecting to nearby towns such as Yeovil.

The surrounding area further enhances the lifestyle on offer, with a wealth of nearby attractions including National Trust properties such as Montacute House and Tintinhull Gardens, along with a selection of historic villages, countryside walks and the Jurassic Coast within easy reach.

Overall, Bower Hinton offers an attractive blend of rural charm and convenience, ideal for those seeking a quieter pace of life without compromising on access to amenities, transport links and the wider Somerset countryside.





Ground Floor



First Floor



Garage

T: 01935 577032 E: info@towerswills.co.uk

The White House 114 Hendford Hill, Yeovil, Somerset BA20 2RF

www.towerswills.co.uk

Please Note No tests have been undertaken of any of the services and any intending purchasers should satisfy themselves in this regard. Towers Wills Ltd for themselves and for the vendor of this property whose agents they are, give notice that, (i) these particulars do not constitute any part of an offer or contract, (ii) all statements contained within these particulars are made without responsibility on the part of Towers Wills or the vendor, (iii) whilst made in good faith, none of the statements contained within these particulars are to be relied upon as a statement of representation or fact, (iv) any intending purchaser must satisfy him/herself by inspection or otherwise as to the correctness of each of the statements contained within these particulars, (v) the vendor does not make or give either Towers Wills or any person in their employment any authority to make or give representation or warranty whatsoever in relation to this property. Photographs / Floor Plans Photographs are reproduced for general information and it must not be inferred that any item is included for sale with this property. Please note floor plans are not to scale and are for identification purposes only. The photographs used in these particulars may have been taken with the use of a wide angle lens. If you have any queries as to the size of the accommodation or plot, please address these with the agent prior to making an appointment to view.